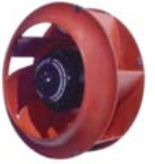


# KBC2E225/63B MOTORIZED IMPELLER

## TECHNICAL DATA

Model	CFM@ Cutoff			Hz	Amps	Watts	Capacitor		RPM	dBA	Min. Temp.	Max. Temp.
	0" S.P.	S.P.	Volts				$\mu$ F	RPM				
KBC2E225/63B	756	2.5	115	60	1.86	210	18.0	2695	69	-40°F/-40°C	122°F/50°C	
KBC2E225/63B	715	1.9	115	50	1.36	150	18.0	2560	67	-40°F/-40°C	122°F/50°C	



## STANDARD FEATURES

- Low noise level
- 756 CFM capacity
- Available in 115 VAC, 50/60Hz
- Compact size
- Precision balanced
- External rotor design
- Precision ball-bearing motors
- Class F, thermally protected
- UL 94 V-0 plastic impeller
- UL Recognized
- Normally in-stock

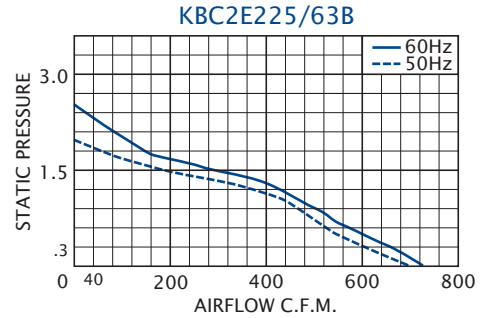
## ACCESSORIES\*

- Capacitor - P/N: 0452-69
- Inlet Ring - P/N: 1114-07
- Automatic Speed Control



**\*Note:** This unit requires a capacitor for operation. Capacitors are sold separately and shipped loose for field installation by customer. An Inlet Ring is recommended for optimum performance. These are sold separately, to be installed by the customer.

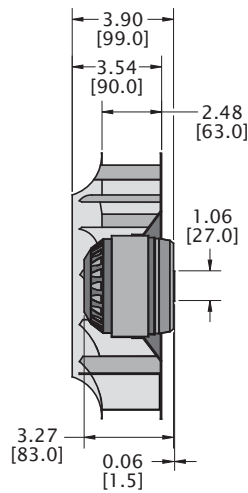
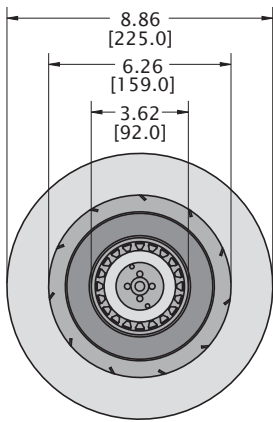
## PERFORMANCE



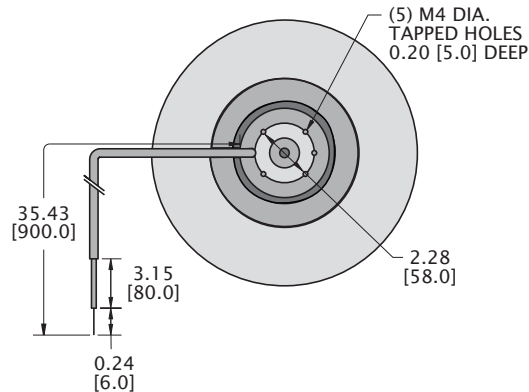
Airflow vs. static pressure curves are shown for 60 Hz and 50 Hz (broken line) inputs. Static pressure is in inches of water.

## DRAWINGS

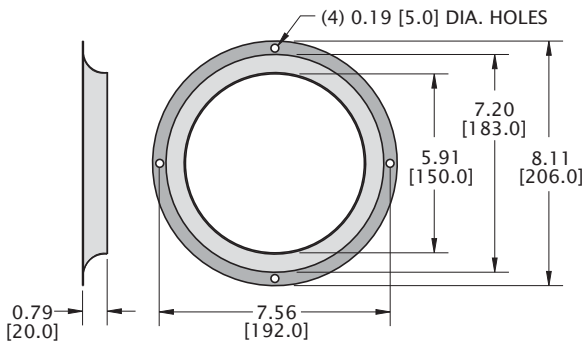
Dimensions, inches [mm], are for reference only and are subject to change.



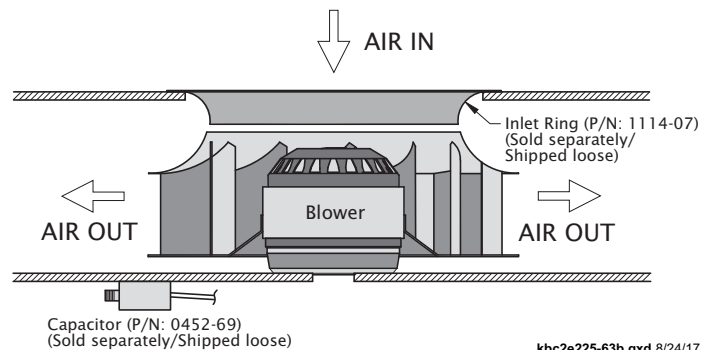
An inlet ring, which must be installed by the customer, is recommended for optimum performance. This unit requires a capacitor which must be mounted and connected by the customer.



## INLET RING P/N: 1114-07



## TYPICAL INSTALLATION



kbc2e225-63b.qxd 8/24/17