



KBC4R355/127A MOTORIZED IMPELLER

TECHNICAL DATA

Model	CFM@	Cutoff				Capacitor		RPM	dBA	Max. Temp
	0" S.P.	S.P.	Volts	Hz	Amps	Watts	μF			
KBC4R355/127A	2070	2.1	115	60	4.0	450	30.0	1530	78	113°F/50°C



STANDARD FEATURES

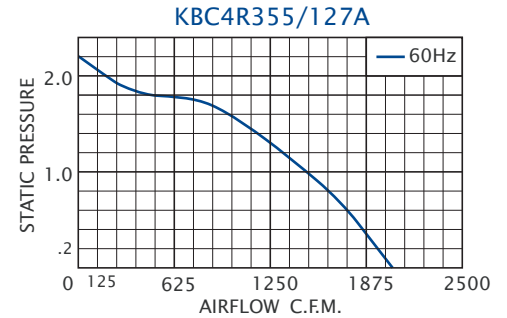
- 2070 CFM Capacity
- Available in 115 VAC, 60Hz
- Compact size
- External rotor design
- Low noise level
- Normally In-Stock
- Precision balanced
- Precision ball-bearing motors

ACCESSORIES*

- Automatic Speed Control
- Capacitor - P/N: 0452-88
- Inlet Ring - P/N: 1114-12



PERFORMANCE



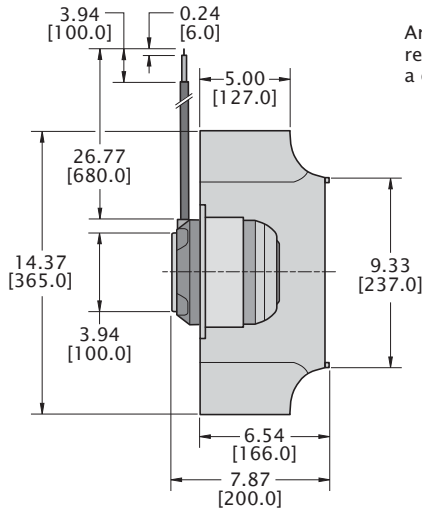
Airflow vs. static pressure curve is shown for 60 Hz input (solid line). Static pressure is in inches of water.



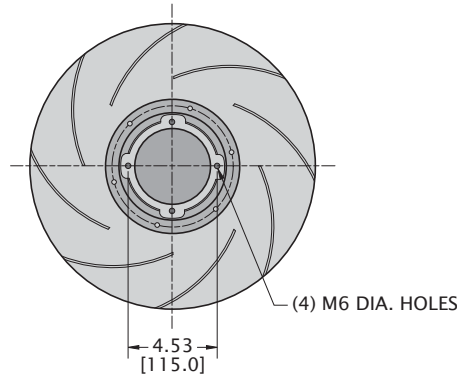
***Note:** This unit requires a capacitor for operation. Capacitors are sold separately and shipped loose for field installation by customer. An Inlet Ring is recommended for optimum performance. These are sold separately, to be installed by the customer.

DRAWINGS

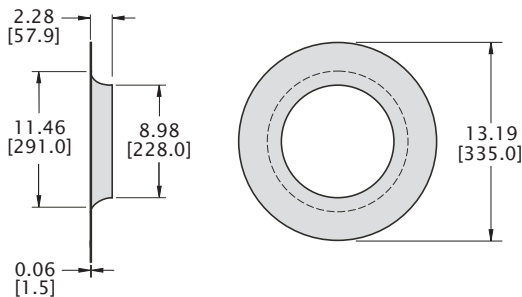
Dimensions, inches [mm], are for reference only and are subject to change.



An inlet ring, which must be installed by the customer, is recommended for optimum performance. This unit requires a capacitor which must be connected by the customer.



INLET RING P/N: 1114-12



TYPICAL INSTALLATION

