



# PROFILE SERIES DP17 PANEL-MOUNT AIR-COOLED AIR CONDITIONER

Model	UL/CUL		Normally In Stock	Listed or Recognized	BTU/H Rating	95/95 Rating	Ambient Temp.				Volts	Hz	* Running Amps	Weight lbs kg
	Listed	Recognized					°F		°C					
							Max.	Min.	Max.	Min.				
KA4C2DP17L	Yes	Listed	2000	1500	131	-20	55	-29	115/100	60/50	4.0	38	17	

\* Rating shown is for operation at maximum ambient temperature.

## STANDARD FEATURES

- Baked Powder Finish
- Built-in Condensate Evaporator
- CFC-Free Refrigerant
- Closed-Loop Cooling
- Epoxy-Coated Condenser Coils
- Heavy-duty Steel Shell
- Mounts Internally or Externally
- NEMA 12 & 3R Ratings Maintained (UL50)
- Six-Foot [1.8m] (minimum) 3-Wire Power Cord
- Two Stage Thermostat
- UL/CUL Listed

## ACCESSORIES AND OPTIONS

- Compressor Short Cycle Protector\*
- Enclosure Heater
- Filter (for external mount only)
- Filter Recoating Adhesive
- Internal Corrosion Protection
- Programmable Temperature Alarm
- Programmable Thermostat Available
- Remote Monitoring\*\*
- Replacement Filters (for external mount only)
- Special materials or finishes
- Special motors, line cords or connectors
- Stainless Steel Shell
- Temperature Alarm

\* Standard Feature on models with a Programmable Thermostat

\*\* Optional Feature for models with a Programmable Thermostat



**NEMA TYPE 12 & 3R MAINTAINED**

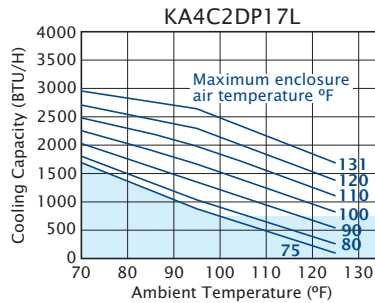


Find additional information on this model at [kooltronic.com](http://kooltronic.com), or use the Technical Documents QR code below.

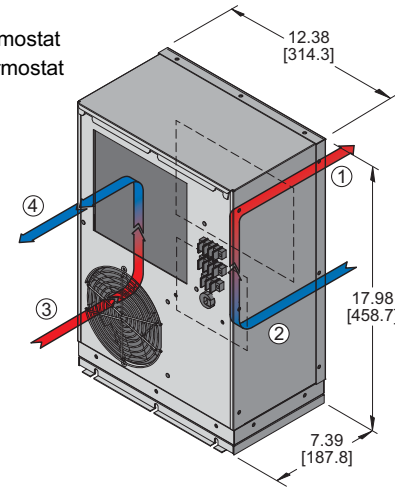
Technical Documents



## PERFORMANCE



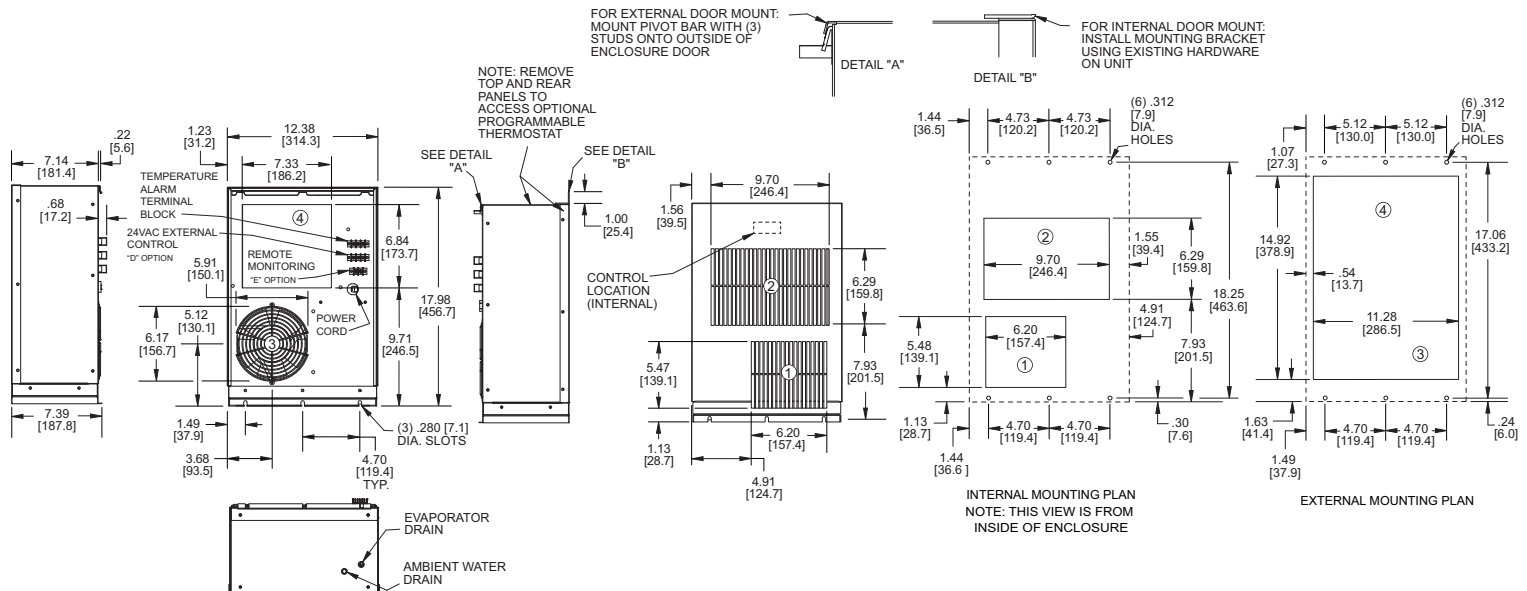
Operation within shaded area not recommended.

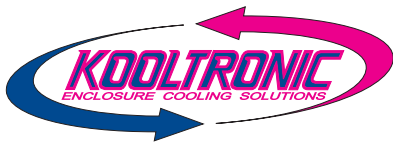


- ① CONDENSER AIR INLET (Ambient Air In)
- ② CONDENSER OUTLET (Warm Ambient Air Out)
- ③ WARM AIR RETURN FROM ENCLOSURE
- ④ COOL AIR OUTLET TO ENCLOSURE

## DRAWINGS Many popular units are available as 3D solid models for customer system integration. Please contact Kooltronic for details.

Dimensions, inches [mm], are for reference only and are subject to change.





---

## DESCRIPTION

The **Profile Series** Air Conditioners are designed specifically for cooling electronic enclosures and can be used for both indoor and outdoor applications. Engineered to be mounted either outside or inside of an enclosure, the **Profile Series** Air Conditioners are the first Kooltronic models to offer this degree of flexibility.

The narrow depth of the **Profile Series** allows the option of internal mounting, making the units virtually tamper-proof. The features engineered into all of the **Profile Series** models make them a tamper-resistant choice for external applications. Combined with a NEMA 12 & 3R Rating, with all models UL/CUL Listed, the **Profile Series** is an excellent choice for telecommunications or other outdoor cabinet applications.

---

## FEATURES AND BENEFITS (STANDARD)

All models UL/CUL Listed, a standard of safety.

Built-in condensate evaporator eliminates the need for a drain (normal operation\*).

CFC-free refrigerant provides a zero ozone depletion potential.

Closed-loop cooling provides stable temperature control while excluding dust and humidity from the electrical enclosure.

Mounts internally or externally for added versatility.

NEMA 12 & 3R ratings for compatibility with listed electrical enclosures.

Both evaporator and condenser coils are epoxy coated, prolonging unit life.

Two stage thermostat helps eliminate compressor cycling.

\* May not be adequate in extremely high humidity with open or leaky enclosure. Overflow condensate drain fitting and hose are included.

---

## FEATURES AND BENEFITS (OPTIONAL)\*

Compressor short cycle protector extends compressor life. (Standard Feature on models with a Programmable Thermostat).

Enclosure heater eliminates damaging condensation, increasing reliability of electrical enclosure components.

Mounting adapter plates are offered to replace another manufacturer's unit.

Programmable thermostat capable of remote monitoring and control is available.

Programmable temperature alarm to alert if early action required.

Remote monitoring provides temperature data for warning of early action required. (Optional Feature on models with a Programmable Thermostat).

Remote thermostat relay for control by a user-supplied control system.

Stainless steel shell for corrosive environments.

### Special paint finishes\*

\*Contact KOOLTRONIC for more information.

---

## REPLACEMENT FILTERS

The DP17 optional filter Part No. 7007F (7.00" x 6.25" x 0.38" [177.8mm x 158.8mm x 9.7mm])