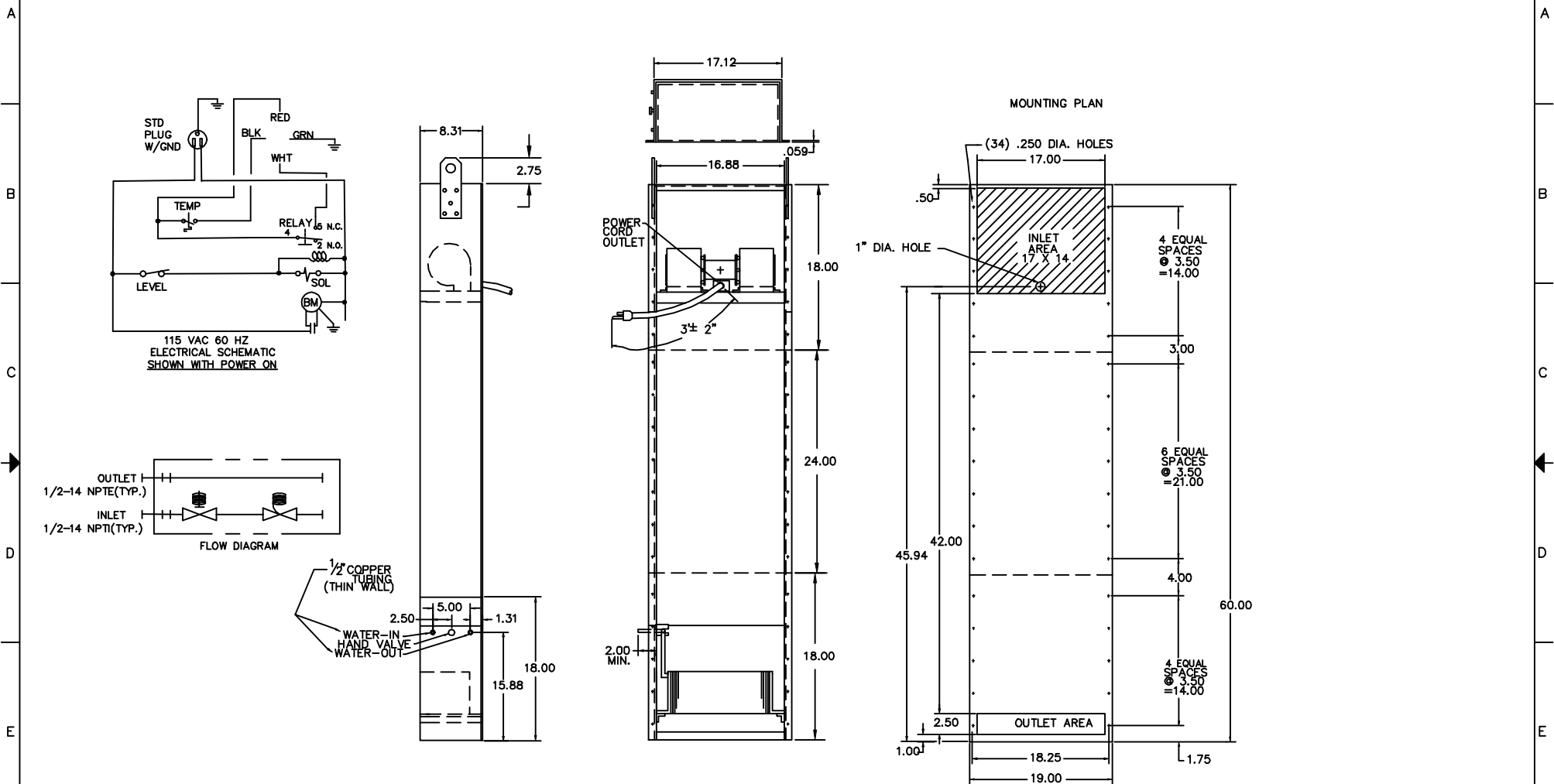


THIS DOCUMENT IS THE PROPERTY OF KOOLTRONIC, INC. AND CONTAINS PROPRIETARY AND CONFIDENTIAL INFORMATION WHICH MUST NOT BE DUPLICATED, USED OR DISCLOSED OTHER THAN AS EXPRESSLY AUTHORIZED BY KOOLTRONIC, INC.

REVISIONS				
SYM	NOTICE	DESCRIPTION	DATE	APPROVED
-	EC 91/50	NEW DRAWING RELEASE	2/12/91	JBW



TOL. ON			INCHES		MM	
.XX	±	.02	±			
.XXX	±	.010	±			
ANGULAR			±	1/2"		

<p>ALL DIMENSIONS ARE IN INCHES. DIMENSIONS DESIGNATED MM ARE IN MILLIMETERS.</p>			
<p>UNLESS OTHERWISE SPECIFIED TOLERANCES NON-ACCUMULATIVE</p>		<p>DRAWN <i>JOE WELSH</i></p>	<p>DATE 02/12/91</p>
<p>CHECKED <b>JT</b></p>		<p>DATE 2/13/91</p>	
<p>ENG. <b>RAY</b></p>		<p>DATE 2/13/91</p>	
<p>MFG. ENG.</p>			
<p>MATERIAL</p>			
<p>UNIT <b>KPHE36-3</b></p>			
<p>APPROVED <b>WRN</b></p>			
<p>DATE 2/13/91</p>			

<p><b>KOOLTRONIC, INC.</b> HOPEWELL, NJ VENTURA, CA USA</p>			
<p>TITLE <b>GENERAL ARRANGEMENT HEAT EXCHANGER</b></p>			
<p>CODE IDENT. NO. <b>06223</b></p>	<p>SIZE <b>C</b></p>	<p>DWG. NO. <b>7032-03-01</b></p>	<p>REV -</p>
<p>SCALE 1/8"=1"</p>		<p>CAD. REF. GA000048</p>	<p>SHEET 1 OF 1</p>