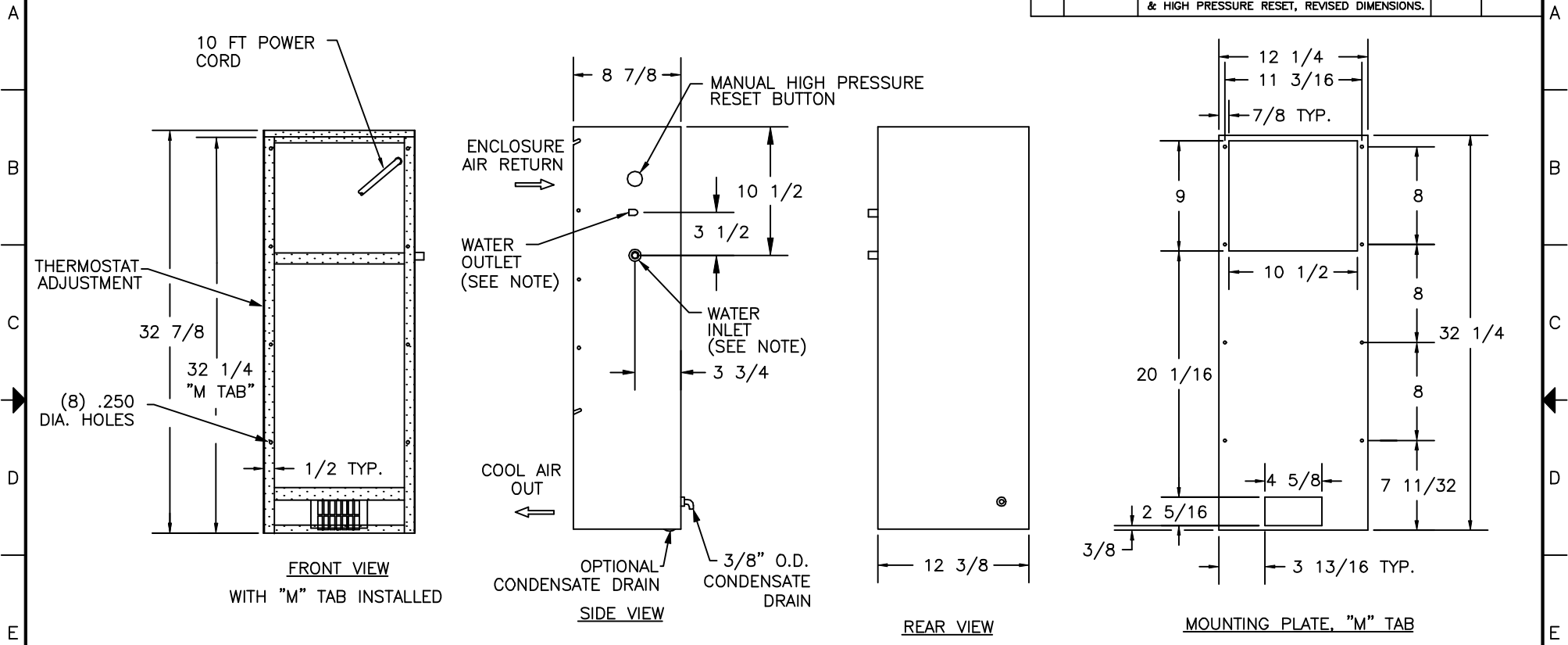


THIS DOCUMENT IS THE PROPERTY OF KOOLTRONIC, INC. AND CONTAINS PROPRIETARY AND CONFIDENTIAL INFORMATION WHICH MUST NOT BE DUPLICATED, USED OR DISCLOSED OTHER THAN AS EXPRESSLY AUTHORIZED BY KOOLTRONIC, INC.

REVISIONS				
SYM	NOTICE	DESCRIPTION	DATE	APPROVED
-	ER 92/234	NEW DRAWING RELEASE	11/12/92	MJH
A	EC 94/171	REVISED LOCATION OF WATER INLET, OUTLET & HIGH PRESSURE RESET, REVISED DIMENSIONS.	7/15/94	D W



- NOTES:
- UNIT FEATURES
 - LOW TEMPERATURE CONTROL
 - SURGE SUPPRESSOR
 - 3/8-18 NPT MALE FITTINGS FOR WATER INLET AND OUTLET

UNLESS OTHERWISE SPECIFIED TOLERANCES NON-ACCUMULATIVE				DRAWN: <i>[Signature]</i> DATE: 11/12/92	
TOL. ON	INCHES	MM	CHECKED:	D W	11/13/92
.XX	± .02	±	ENG.	L N	11/25/92
.XXX	± .010	±	MFG. ENG.		
ANGULAR		± 1/2°			
MATERIAL			APPROVED:	GAR	11/25/92
UNIT	KAC_WNP33				



TITLE			
GENERAL ARRANGEMENT AIR CONDITIONER			
CODE IDENT. NO.	SIZE	DWG. NO.	REV
06223	B	609033W-00-00	A
SCALE 1/8"=1"	CAD. REF. GAO0081	SHEET	1 OF 1