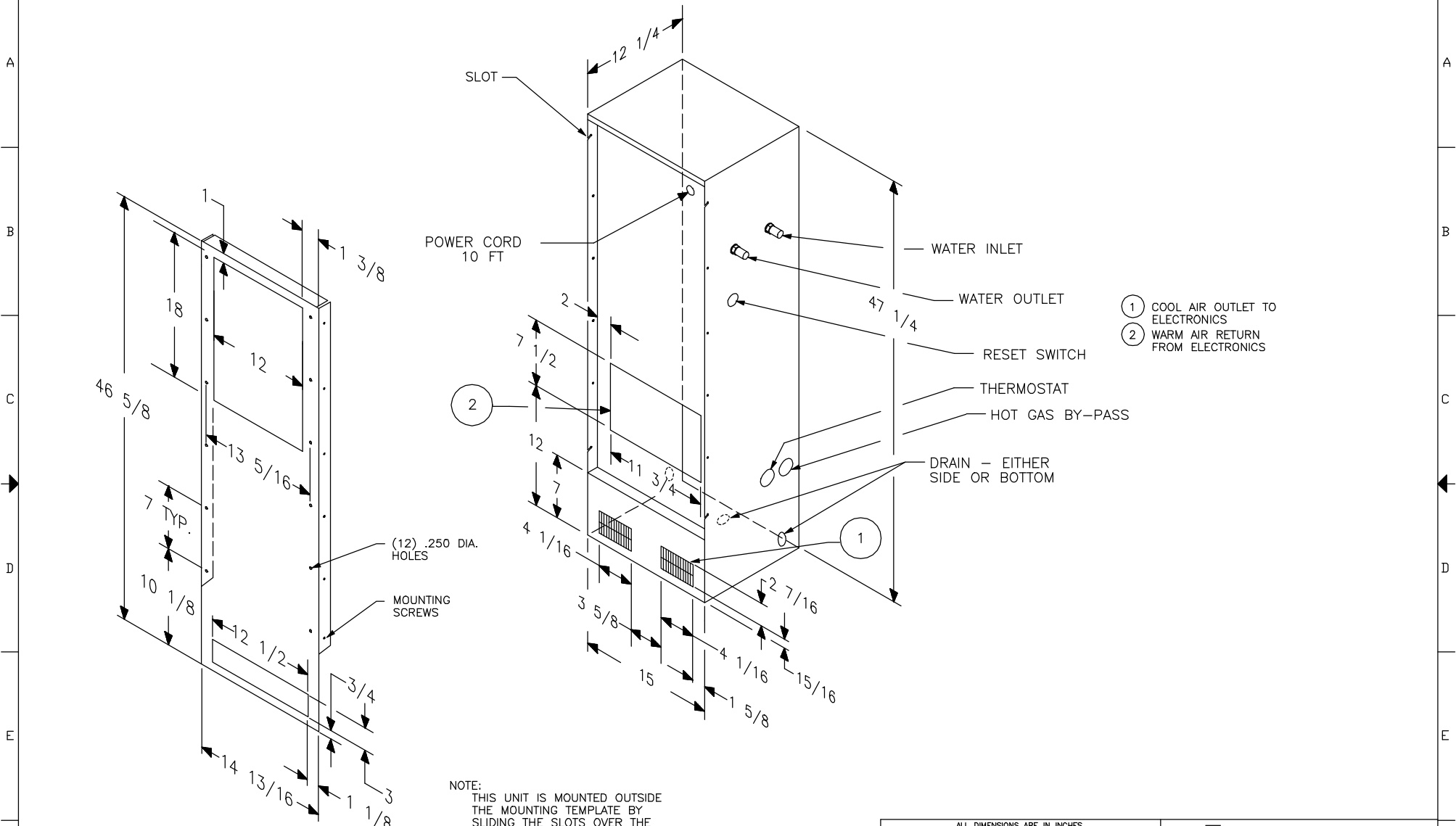


THIS DOCUMENT IS THE PROPERTY OF KOOLTRONIC, INC. AND CONTAINS PROPRIETARY AND CONFIDENTIAL INFORMATION WHICH MUST NOT BE DUPLICATED, USED OR DISCLOSED TO OTHERS, EXCEPT AS EXPRESSLY AUTHORIZED IN WRITING BY KOOLTRONIC INC.

REVISIONS				
SYM	NOTICE	DESCRIPTION	DATE	APPROVED
-	ER 93/32	NEW DRAWING RELEASE	02/25/93	MJH/MEM



NOTE:  
THIS UNIT IS MOUNTED OUTSIDE THE MOUNTING TEMPLATE BY SLIDING THE SLOTS OVER THE FOUR (4) SCREWS LOCATED ON THE TEMPLATE.

ALL DIMENSIONS ARE IN INCHES. DIMENSIONS DESIGNATED MM ARE IN MILLIMETERS.				DRAWN M. J. H. HOPEWELL, NJ		DATE 02/25/93
UNLESS OTHERWISE SPECIFIED TOLERANCES NON-ACCUMULATIVE			CHECKED		MFG. ENG.	
TOL. ON	INCHES	MM				
.XX	± .02	±				
.XXX	± .010	±				
ANGULAR	± 1/2°					
MATERIAL			APPROVED		CODE IDENT. NO. SIZE DWG. NO. REV	
UNIT KAC4 THRU 12WNP47					06223 C 609047-00-00A -	
					SCALE 1,000=1 CAD. REF. GA000094 SHEET 1 OF 1	



GENERAL ARRANGEMENT  
AIR CONDITIONER