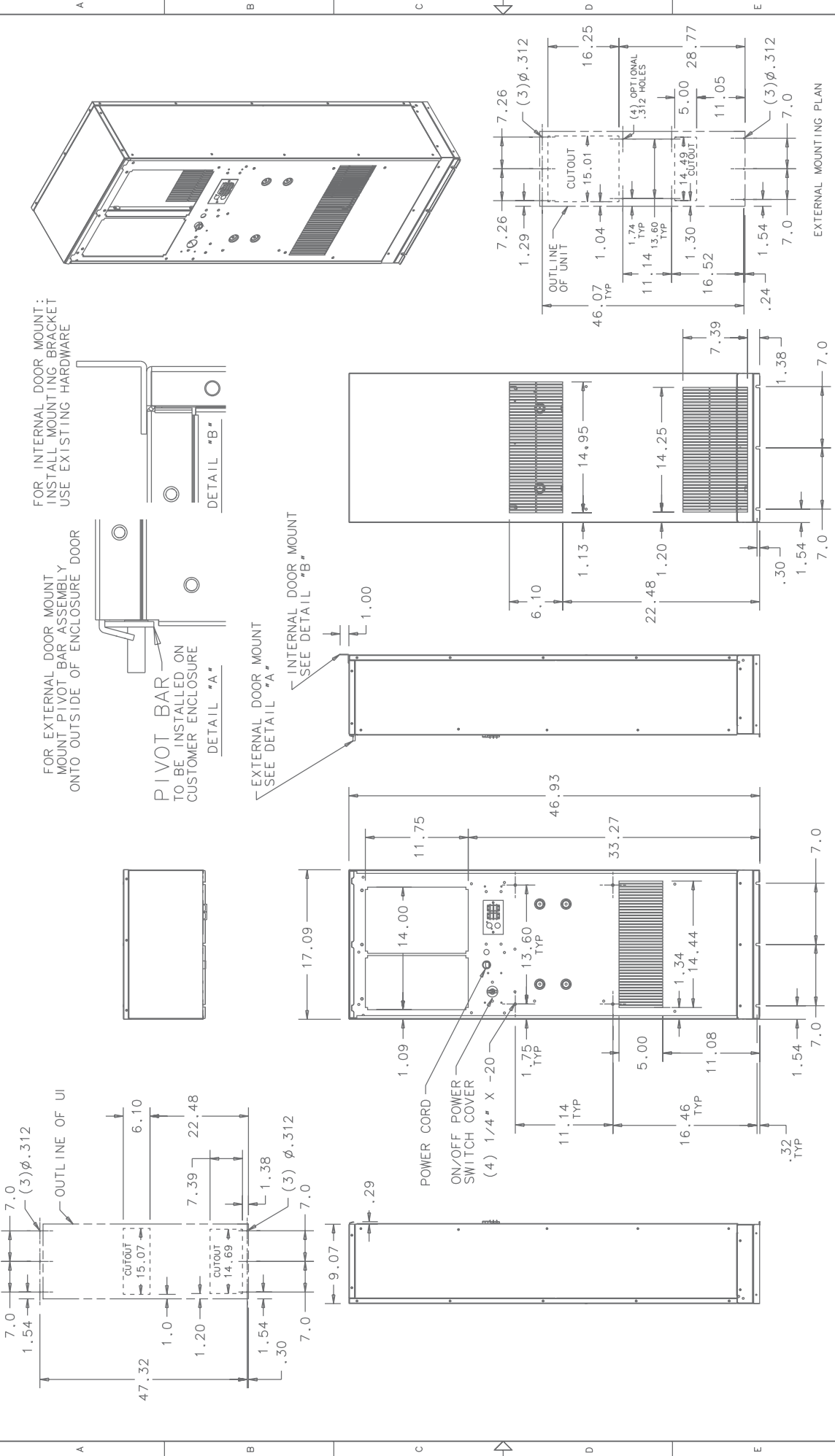


| REVISIONS | | DATE | APPROVED |
|-----------|-----------|--|-------------|
| SWH | NOTICE | | |
| - | ER 05/061 | NEW DRAWING RELEASE | 6/6/05 JS |
| A | EC 07/167 | PICTORIAL UPDATE & REVISED DIMENSIONS. | 5/22/07 DW- |



| DIMENSIONS ARE IN INCHES UNLESS OTHERWISE SPECIFIED TOLERANCES NON-ACCUMULATIVE | | DATE | |
|---|-------------|---------------|---------|
| TD. DN | INCHES | DESIGNED | 6/12/05 |
| .XX | : .02 | ENGR. | 6/14/05 |
| .XXX | : .010 | MFG. ENG. | |
| ANGULAR | : 1/2° | | |
| MATERIAL | | | |
| UNIT | K_A_C9DP47L | APPROVED | 6/14/05 |
| | | B KREELEY | |
| | | SCALE: 1:25=1 | |
| | | PHO. REF. | |
| | | SHEET | 1 OF 1 |

| DIMENSIONS ARE IN MILLIMETERS UNLESS OTHERWISE SPECIFIED TOLERANCES NON-ACCUMULATIVE | | DATE | |
|--|-------------|---------------|---------|
| TD. DN | MILLIMETERS | DESIGNED | 6/12/05 |
| .XX | : .02 | ENGR. | 6/14/05 |
| .XXX | : .010 | MFG. ENG. | |
| ANGULAR | : 1/2° | | |
| MATERIAL | | | |
| UNIT | K_A_C9DP47L | APPROVED | 6/14/05 |
| | | B KREELEY | |
| | | SCALE: 1:25=1 | |
| | | PHO. REF. | |
| | | SHEET | 1 OF 1 |

| Kooltronic, Inc. | |
|---------------------|----------------|
| GENERAL ARRANGEMENT | K2A4C9DP47L |
| DESIGNED BY | JERRY STEDNICK |
| ENGINNER | SDS |
| MANUFACTURED BY | BM |
| DATE | 6/14/05 |
| LOCATION | PO BOX 1125 |
| | NEWTON, NJ USA |