

H9 SERIES HORIZONTAL RACK-MOUNTED AIR-COOLED AIR CONDITIONERS

KA4C3.5H9R w/ s/n above D18A1263

K2A4C3.5H9R w/ s/n above D17A1221

TECHNICAL DATA

Model	UL/CUR Listed or Recognized	95/95 BTU/H Capacity	Ambient Temp. Rating		Volts	Hz	Running Amps	Fuse Size (Amps)	Approx. Weight lbs. kg.
			°F	°C					
KA4C3.5H9R	Recognized	3500	3516	120/50	49/10	115/100	60/50	10.0	15 95 44
K2A4C3.5H9R	Recognized	3500	3137	125/50	52/10	230/200	60/50	5.1	15 95 44

Rating shown is for operation at maximum ambient temperature.

STANDARD FEATURES

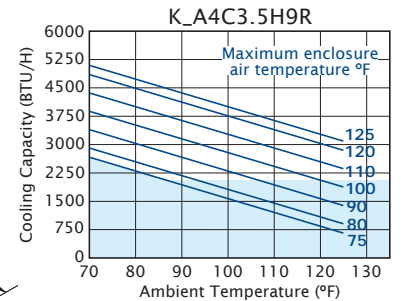
- Baked Powder Finish
- Built-in Condensate Evaporator
- CFC-Free Refrigerant
- Closed-Loop Cooling
- Compressor Short Cycle Protector
- Filter
- Low Ambient Kit
- Programmable Temperature Alarm
- Programmable Thermostat
- UL/CUR Recognized

ACCESSORIES AND OPTIONS

- Filter Recoating Adhesive
- Internal Corrosion Protection
- Lifting Eyes
- Remote Monitoring
- Remote Thermostat Relay
- Replacement Filters
- Special controls or indicators
- Special materials or finishes
- Special controls, line cords or connectors



PERFORMANCE



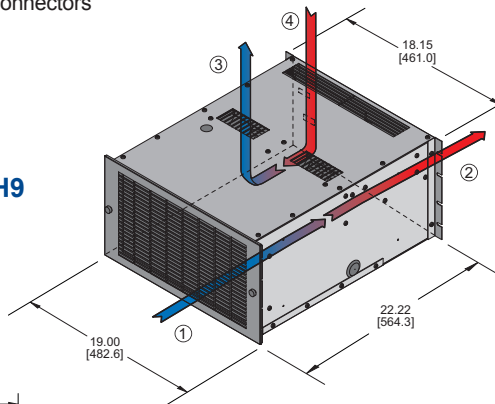
Operation within shaded areas not recommended.

Find additional information on this model at kooltronic.com, or use the Technical Documents QR code below.

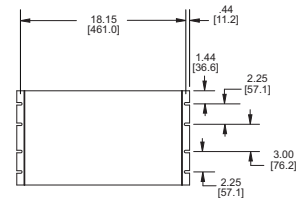
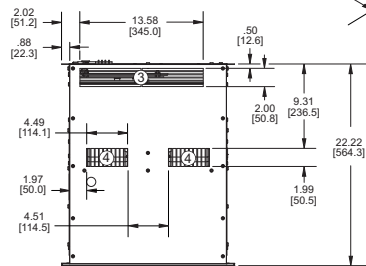
Technical Documents



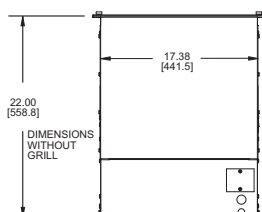
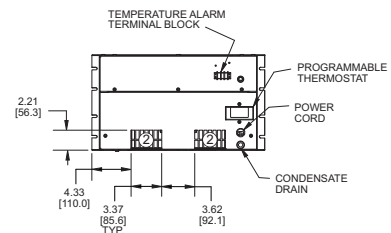
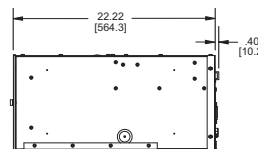
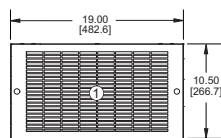
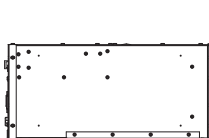
H9



- 1 FILTERED CONDENSER AIR INLET (Ambient Air In)
- 2 CONDENSER OUTLET (Warm Ambient Air Out)
- 3 WARM AIR RETURN FROM ENCLOSURE
- 4 COOL AIR OUTLET TO ENCLOSURE



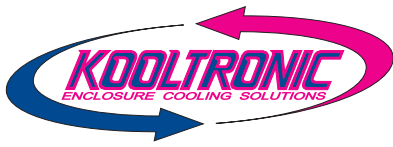
MOUNTING PLAN



Many popular units are available as 3D solid models for customer system integration. Please contact Kooltronic for details.

Dimensions, inches [mm], are for reference only and subject to change.

h9.qxd (6/2/23) (CDR: 20498)



H9 SERIES HORIZONTAL RACK-MOUNTED AIR-COOLED AIR CONDITIONERS

KA4C3.5H9R w/ s/n above D18A1263

K2A4C3.5H9R w/ s/n above D17A1221

DESCRIPTION

KOOLTRONIC **H9 Air-Cooled Rack-Mounted Air Conditioners** are particularly suited for applications where internal horizontal mounting is preferred over external panel, door or top mounting.

Air-cooled models are typically mounted internally at either the top or bottom of the cabinet.

KOOLTRONIC **Rack-Mounted Air Conditioners** all include EIA-notched flanges. Air-cooled models are provided with attractive 19-inch wide stainless steel grilles and knurled captive fasteners for easy removal. Grille area is 65% open. If preferred, side rails can be supplied.

Outdoor or corrosive environments require weather protection and/or special internal and external protective features.

For extreme ambient temperatures and/or severely contaminated environments, the use of **Water-Cooled Air Conditioners** is recommended.

KOOLTRONIC also designs and manufactures a variety of Air Conditioners to meet unique specifications. We invite your inquiries about our modification and custom-design capabilities

FEATURES AND BENEFITS (STANDARD)

All models UL/CUR Recognized.

Built-in condensate evaporator eliminates the need for a drain (normal operation*).

CFC-free refrigerant is used in all H9 Air Conditioners.

Closed-loop cooling provides stable temperature control while excluding dust and humidity from the electrical enclosure.

Compressor short-cycling protection extends compressor life.

Low Ambient Kit maintains sufficient operating pressures when ambient temperatures drop below 50°F [10°C].

Programmable temperature alarm to alert if early action required.

Programmable thermostat capable of remote monitoring and control.

* May not be adequate in extremely high humidity with open or leaky enclosure. Overflow condensate drain fitting and hose are included.

FEATURES AND BENEFITS (OPTIONAL)*

Internal corrosion protection to increase reliability in hostile environments.

Remote monitoring provides temperature data for warning of early action required. (Optional Feature on models with a Programmable Thermostat).

Remote thermostat relay for control by a user-supplied control system.

Special paint finishes.

*Contact KOOLTRONIC for more information.

REPLACEMENT FILTERS

The H9/H10 Filter Part No. is 1175F (16.63" x 9.63" x 0.50" [422mm x 244mm x 13mm])

