

- 16 Amp DC switching capacity
- Variety of applications
- Compact design
- DIN rail mountable

These Electronic Relays have been designed to switch high powered DC operated equipment up to 16 Amps. The 16 Amp relay contact will be closed once a pilot contact of a connected external switch, i.e. a thermostat (not provided), is closed.



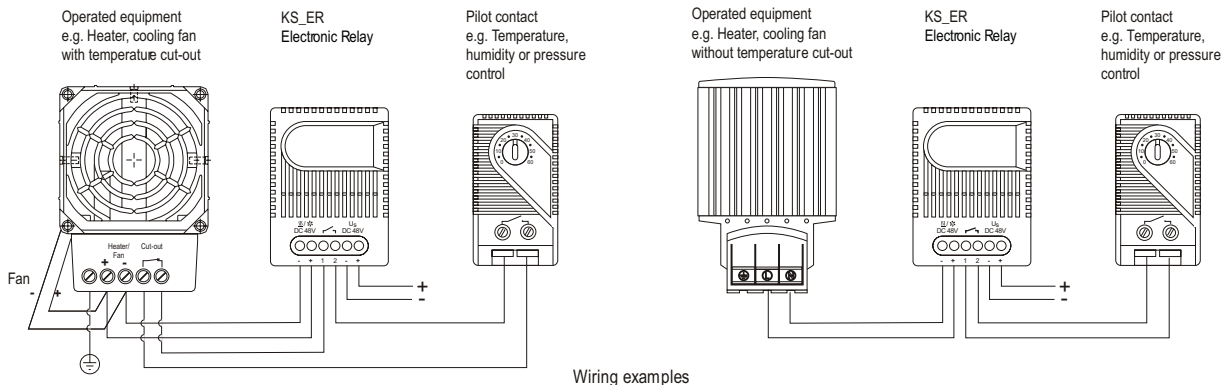
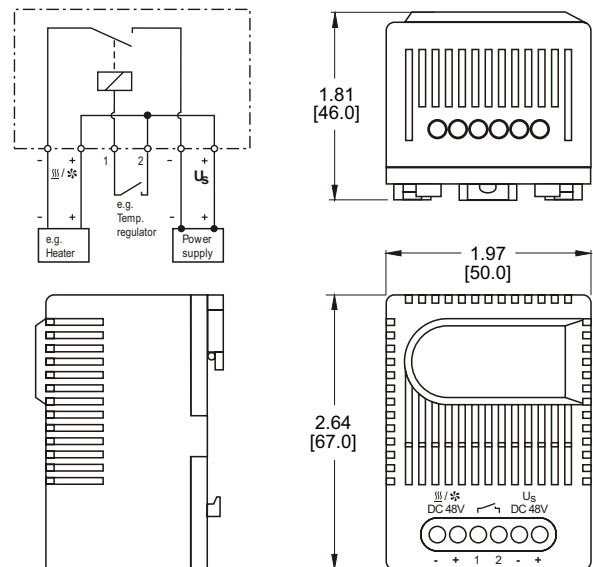
Model No.	Voltage	Max. switching capacity
KS7ER	DC 20 - 28 V	16A at DC 28 V (resistive load)
KS8ER	DC 38 - 56 V	16A at DC 56 V (resistive load)

## TECHNICAL DATA

Contact type:	Snap-action contact, normally open (Relay/MOSFET)
Contact resistance:	< 10mΩ
Service life:	> 100,000 cycles
EMI/EMC compliance:	EN 55014-1-2, EN 61000-3-2, EN 61000-3-3
Connection:	6-pole terminal for AWG 14 max. (2.5 mm <sup>2</sup> )
Mounting:	Clip for 35 mm DIN rail (EN 50022)
Housing:	Plastic, UL94V-0
Weight:	Approx. 3.0 oz. (85 g)
Mounting position:	Variable
Operating and storage temperature:	-49 to 158°F (-45 to 70°C)
Protection type:	IP 20
Agency approvals:	VDE and UL intended

## DRAWINGS

Dimensions, inches [mm], are for reference only and are subject to change.



Wiring examples

Specifications are subject to change without notice. Suitability of this product for its intended use and any associated risks must be determined by the end customer/buyer in its final application.