



NP17 TRIMLINE AIR-COOLED PANEL-MOUNTED AIR CONDITIONERS

with Serial Numbers B17A0456 and above

Products in red are legacy products. Legacy products are no longer in normal production. Consult factory for availability. Recommended replacement: See *Guardian/GuardianX* or *SlimKool* Series.



**NEMA
TYPE 12
MAINTAINED**



TECHNICAL DATA

Model	Normally in Stock	BTU/H Capacity	95/95 Rating BTU/H	Ambient Temp. °F Max./Min.	Volts	Hz	* Running Amps	Approx. Weight (lbs.)
KA4C2.0NP17L		2000	1800	120/-20	115/100	60/50	5.0	55

* Rating shown is for operation at maximum ambient temperature.

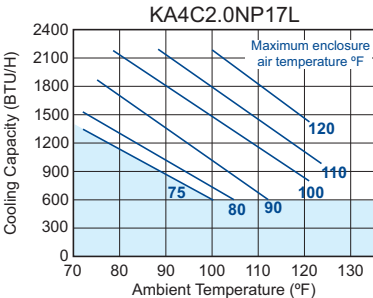
STANDARD FEATURES

- Baked Powder Finish
- Built-in Condensate Evaporator
- CFC-Free Refrigerant
- Compressor Short Cycle Protector
- Epoxy-Coated Coils
- Filter
- Low Ambient Kit
- NEMA 12 Rating Maintained (UL50)
- Programmable Thermostat
- UL/CUL Listed

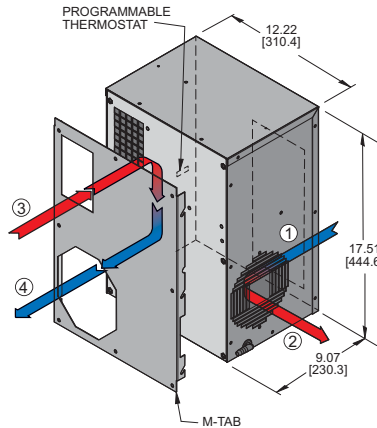
ACCESSORIES AND OPTIONS

- Filter Recoating Adhesive
- Internal Corrosion Protection
- Lead-Lag Controller
- Lifting Eyes
- Programmable Temperature Alarm
- Remote Monitoring
- Remote Thermostat Relay
- Replacement Filters
- Special controls or indicators
- Special materials or finishes
- Special motors, line cords, or connectors

PERFORMANCE



Operation within shaded area not recommended.

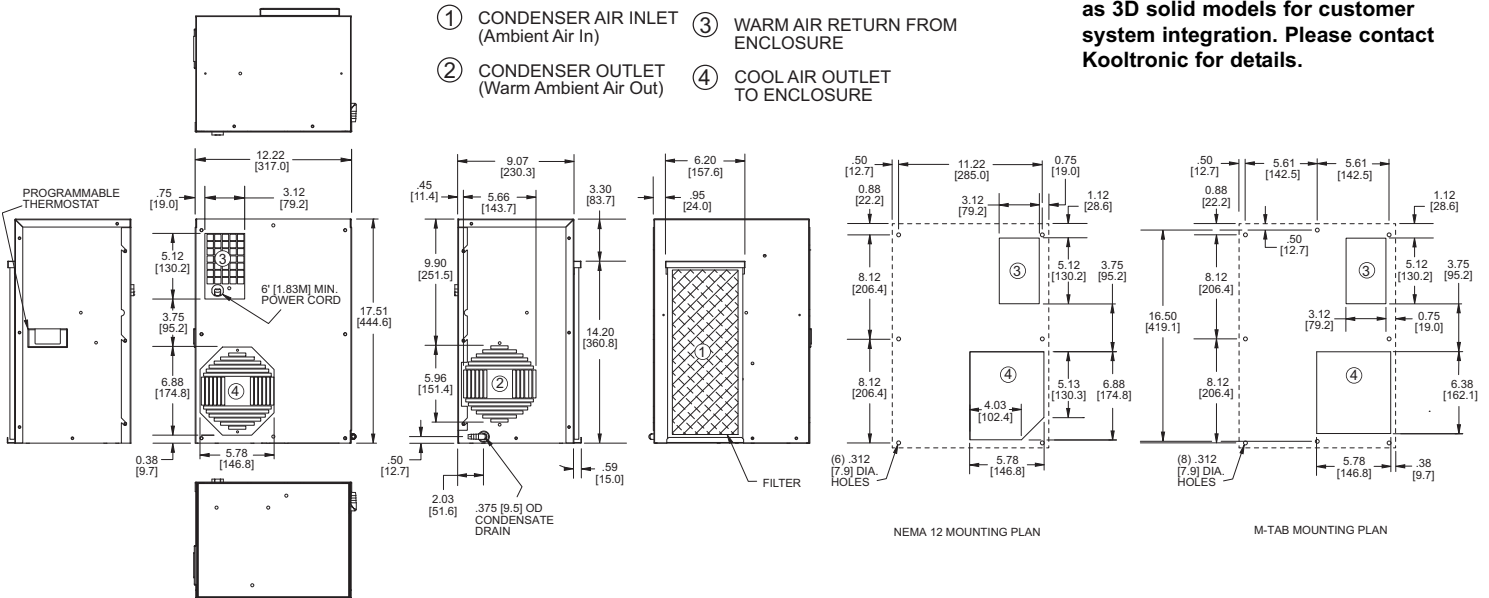


Find additional information on this model at kooltronic.com, or use the Technical Documents QR code below.

Technical Documents



Many popular units are available as 3D solid models for customer system integration. Please contact Kooltronic for details.



Dimensions, inches [mm], are for reference only and subject to change.

np17n.qxd 2/2/18



NP17 TRIMLINE AIR-COOLED PANEL-MOUNT AIR CONDITIONERS with Serial Numbers B17A0456 and above

DESCRIPTION

The **TrimLine NP17 Series** consists of compact models with a capacity of 2,000 BTU/H. This series is designed with a minimum width to take up less cabinet space on the exterior panel or door.

Corrosive environments require special internal and external protective features. Also see Guardian/GuardianX and SlimKool NEMA 4/4X Series.

For extreme ambient temperatures and/or severely contaminated environments, the use of **TrimLine** or other **Water-Cooled Air Conditioners** is recommended.

KOOLTRONIC also designs and manufactures a variety of Air Conditioners to meet *unique* specifications. We invite your inquiries about our modification and custom-design capabilities.

FEATURES AND BENEFITS (STANDARD)

All models UL/CUL Listed, a standard of safety.

Built-in condensate evaporator eliminates the need for a drain (normal operation*).

CFC-free refrigerant provides a zero ozone depletion potential.

Closed-loop cooling provides stable temperature control while excluding dust and humidity from the electrical enclosure.

Compressor short-cycling protection extends compressor life.

Condenser impeller cycling provides stable capacity and temperature control.

Condenser filtration to maintain peak thermal performance extends compressor life.

NEMA 12 rating for compatibility with listed electrical enclosures.

Programmable thermostat capable of remote monitoring and control.

Both evaporator and condenser coils are epoxy coated, prolonging unit life.

* May not be adequate in extremely high humidity with open or leaky enclosure. Overflow condensate drain fitting and hose are included.

FEATURES AND BENEFITS (OPTIONAL)*

Aluminum Shell if light weight and/or compatibility with aluminum enclosures is required.

Enclosure heater eliminates damaging condensation, increasing reliability of electrical enclosure components.

Lead-lag control for two air conditioners provides for capacity control, and alternates usage, increasing reliability.

Low Ambient Kit maintains sufficient operating pressures when ambient temperatures drop below 50°F [10°C].

Mounting adapter plates are offered to replace another manufacturer's unit.

Programmable temperature alarm to alert if early action required.

Remote monitoring provides temperature data for warning of early action required.

Remote thermostat relay for control by a user-supplied control system.

Stainless Steel Shell for applications in corrosive or other hostile environments.

Special paint finishes.

*Contact KOOLTRONIC for more information.

REPLACEMENT FILTERS

The NP17 filter Part No. is 13658F (13.62" x 5.87" x 0.34" [346.0mm x 149.2mm x 8.6mm])



Cooling
resources,
tips & advice.

