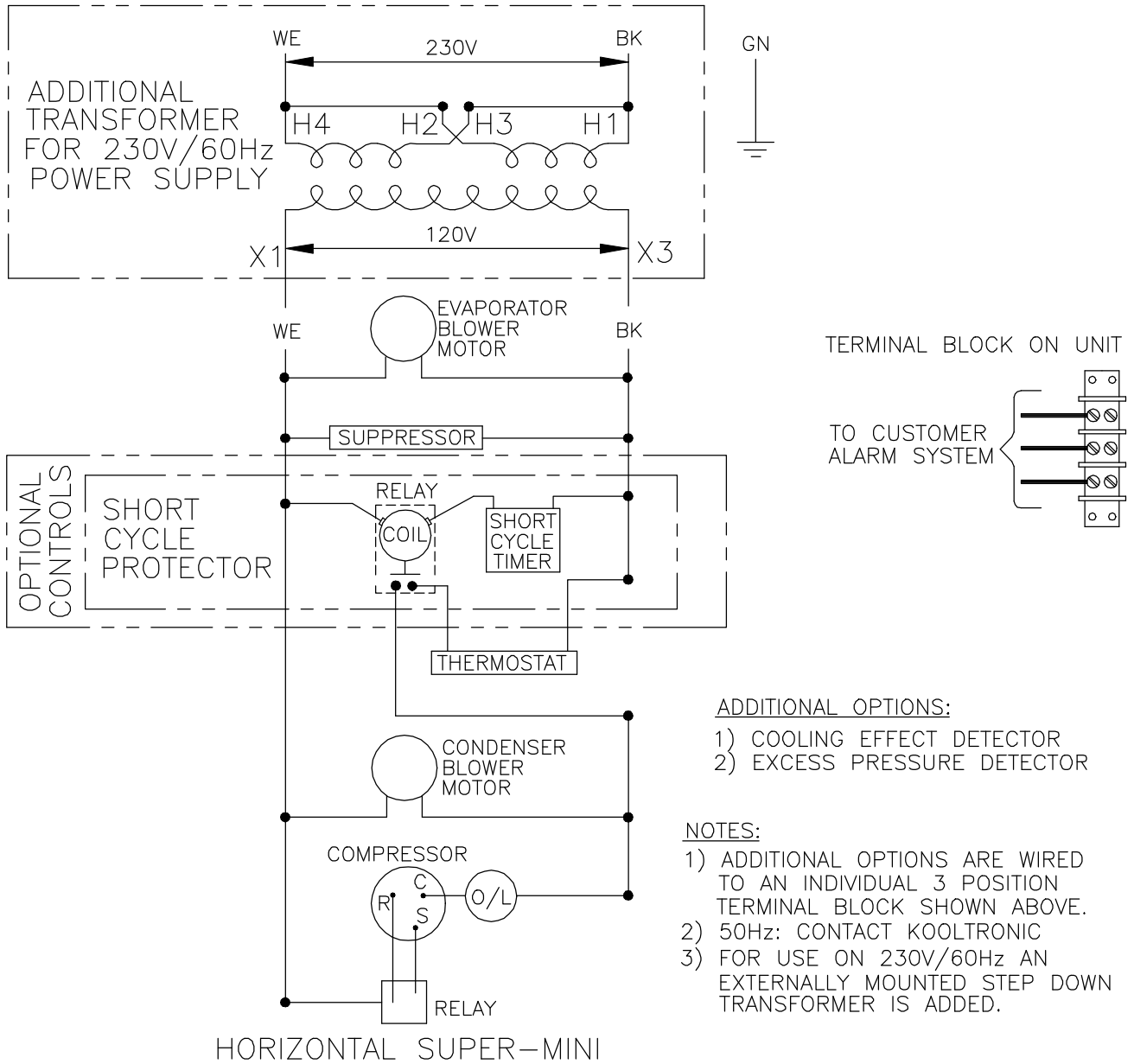


THIS DOCUMENT IS THE PROPERTY OF KOOLTRONIC, INC. AND CONTAINS PROPRIETARY AND CONFIDENTIAL INFORMATION WHICH MUST NOT BE DUPLICATED, USED OR DISCLOSED TO OTHERS, EXCEPT AS EXPRESSLY AUTHORIZED IN WRITING BY KOOLTRONIC, INC.

REVISIONS


SYM	NOTICE	DESCRIPTION	DATE	APPROVED
-	ER 92/141	NEW DRAWING RELEASE	10/16/92	MJH
A	EC 94/175	REVISED ADDITIONAL TRANS. FOR 230V/60Hz WIRING	7/22/94	MJH



ALL DIMENSIONS ARE IN INCHES, DIMENSIONS DESIGNATED MM ARE IN MILLIMETERS.

UNLESS OTHERWISE SPECIFIED TOLERANCES NON-ACCUMULATIVE		
TOL. ON	INCHES	MM
.XX	± .02	±
.XXX	± .010	±
ANGULAR	± 1/2°	
MATERIAL		
UNITS	KAC2.5HS	

DRAWN	DATE
MARTIN HIRCSHHORN	10/16/92
CHECKED B. FATTO	11/4/92
ENG. I. YEVZIKOV	11/4/92
MFG. ENG.	
APPROVED G. ROSENKRANS	11/4/92



HOPEWELL, NJ VENTURA, CA USA

WIRING DIAGRAM

CODE IDENT. NO.	SIZE	DWG. NO.	REV
06223	A	WD-118	A
SCALE 1=1	CAD. REF. WD000006	SHEET	1 OF 1