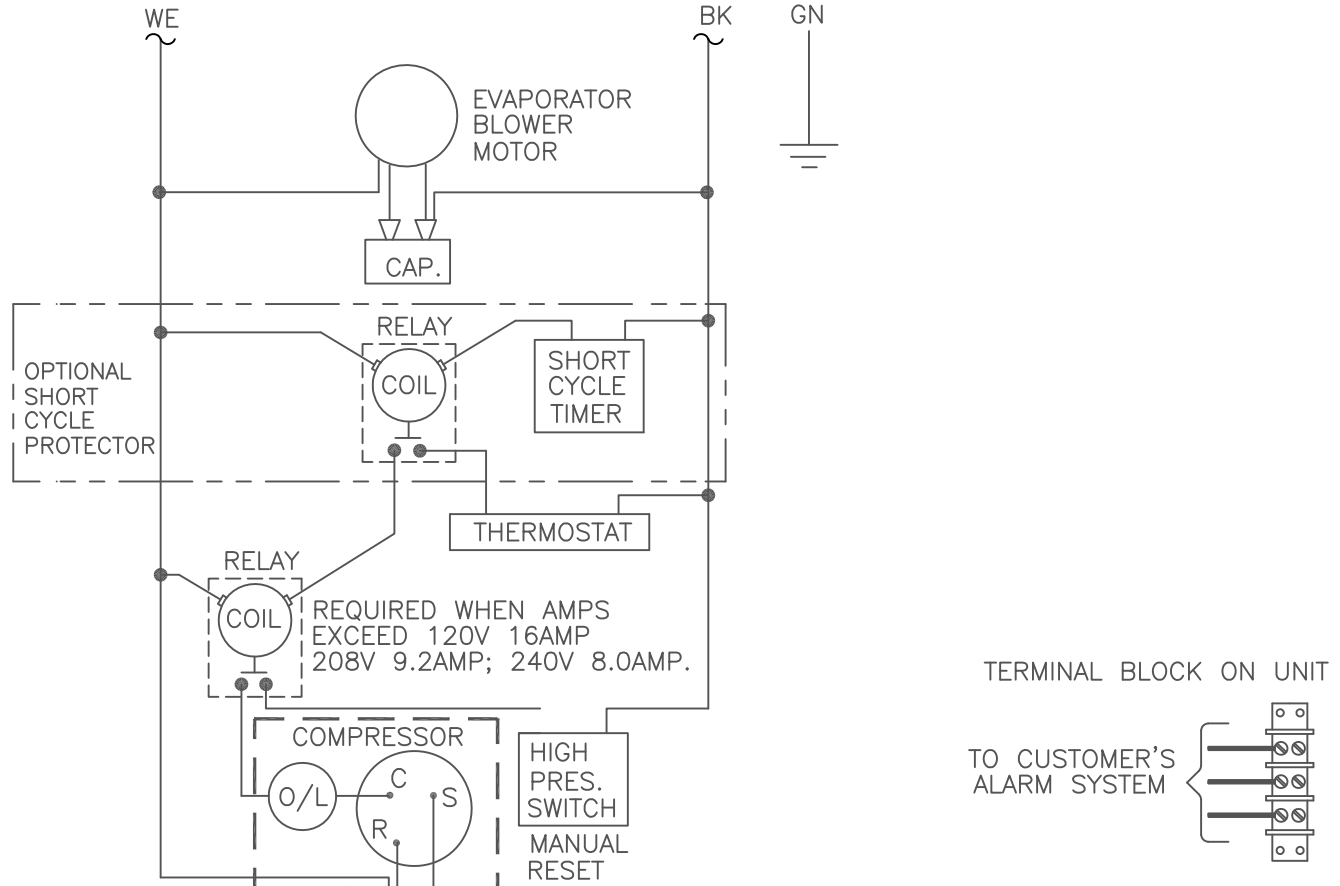


THIS DOCUMENT IS THE PROPERTY OF KOOLTRONIC, INC. AND CONTAINS PROPRIETARY AND CONFIDENTIAL INFORMATION WHICH MUST NOT BE DUPLICATED, USED OR DISCLOSED OTHER THAN AS EXPRESSLY AUTHORIZED BY KOOLTRONIC, INC.

REVISIONS				
SYM	NOTICE	DESCRIPTION	DATE	APPROVED
-	EC 92/307	NEW DRAWING RELEASE	11/10/92	MJH
A	ER 99/154	ADDED DETAIL ADDING START ASST. FOR 0665-113 & -114 COMP.	10/28/99	RL
B	EC 14/170	REMOVED SURGE SUPPRESSOR	6/23/14	LM/



- ADDITIONAL OPTIONS
- 1) AIRFLOW SWITCH
 - 2) COOLING EFFECT DETECTOR
 - 3) EXCESS PRESSURE DETECTOR

- NOTES:
- 1) ADDITIONAL OPTIONS ARE WIRED TO AN INDIVIDUAL 3 POSITION TERMINAL BLOCK SHOWN ABOVE.
 - 2) 50Hz: CONTACT KOOLTRONIC

WIRING FOR UNITS WITH 0665-113 & 0665-114 COMP.

ALL DIMENSIONS ARE IN INCHES, DIMENSIONS DESIGNATED MM ARE IN MILLIMETERS.

UNLESS OTHERWISE SPECIFIED TOLERANCES NON-ACCUMULATIVE

TOL. ON	INCHES	MM
.XX	± .02	±
.XXX	± .010	±
ANGULAR		± 1/2°

MATERIAL
UNITS KAC_WNP33, 47

DRAWN *MARTIN H IRCSHHORN* DATE 11/10/92

CHECKED
ENG.
MFG. ENG.

APPROVED



WIRING DIAGRAM

CODE IDENT. NO.	SIZE	DWG. NO.	REV
06223	A	WD-132	B
SCALE 7/8=1	CAD. REF.	WD000020	SHEET 1 OF 1