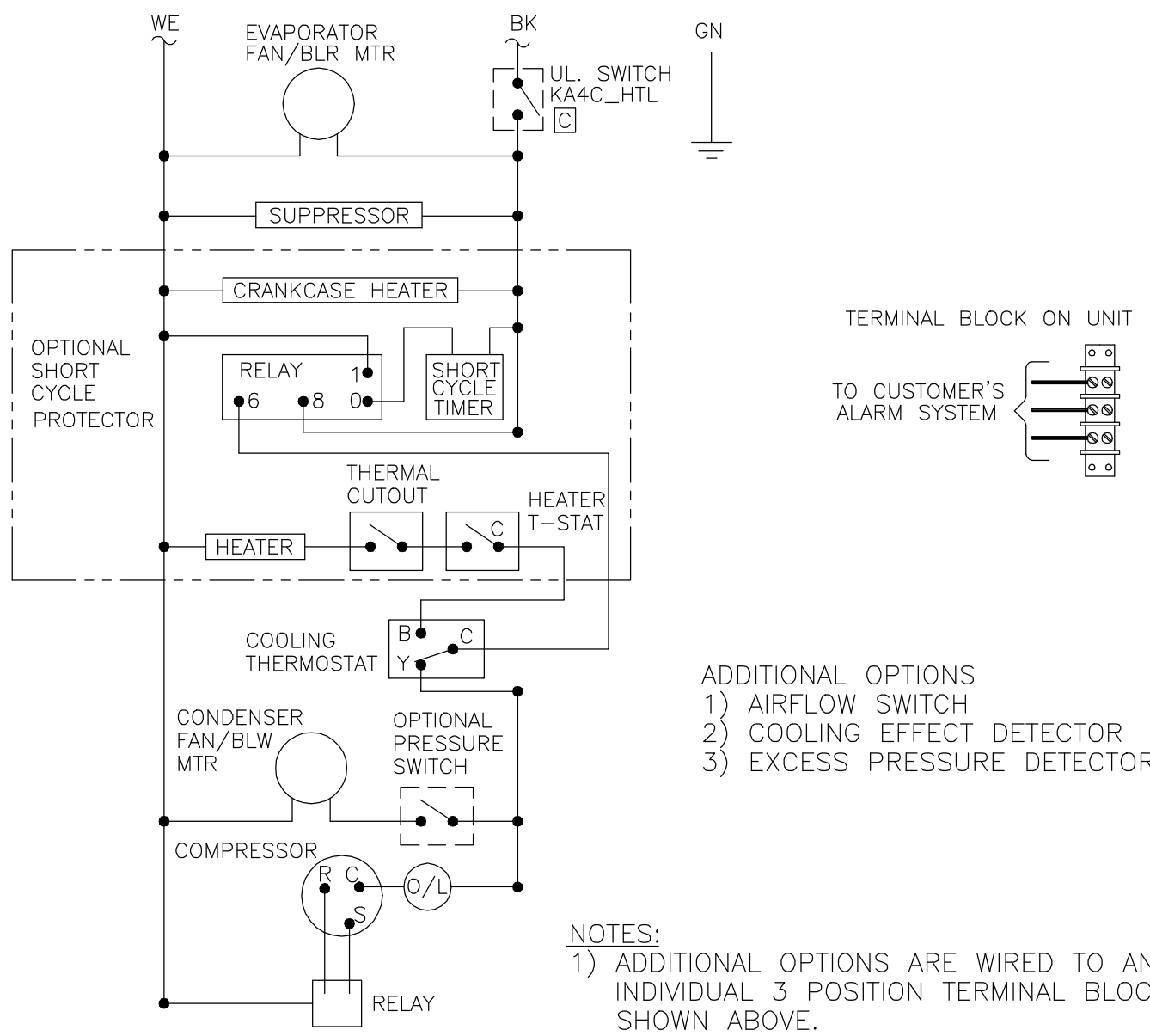


THIS DOCUMENT IS THE PROPERTY OF KOOLTRONIC, INC. AND CONTAINS PROPRIETARY AND CONFIDENTIAL INFORMATION WHICH MUST NOT BE DUPLICATED, USED OR DISCLOSED OTHER THAN AS EXPRESSLY AUTHORIZED BY KOOLTRONIC, INC.


REVISIONS				
SYM	NOTICE	DESCRIPTION	DATE	APPROVED
-	EC 94/2	NEW DRAWING RELEASE	1/11/94	MJH
A	EC 94/102	ADDED OPTIONAL PRESSURE SWITCH, ADDED UNIT KA4C2.0NM	05/03/94	RDG
B	ER 95/178	ADDED HEATER, THERM. C/O, HEATER T-STAT & UPDATED RELAY	9/27/95	TLR
C	EC 98/32	ADDED UL. SWITCH FOR KA4C_HTL UNIT ONLY	2/23/98	SDS



- ADDITIONAL OPTIONS
- 1) AIRFLOW SWITCH
  - 2) COOLING EFFECT DETECTOR
  - 3) EXCESS PRESSURE DETECTOR

NOTES:  
 1) ADDITIONAL OPTIONS ARE WIRED TO AN INDIVIDUAL 3 POSITION TERMINAL BLOCK SHOWN ABOVE.  
 2) 50Hz: CONTACT KOOLTRONIC

ALL DIMENSIONS ARE IN INCHES, DIMENSIONS DESIGNATED MM ARE IN MILLIMETERS.		
UNLESS OTHERWISE SPECIFIED TOLERANCES NON-ACCUMULATIVE		DATE 1/11/94
TOL. ON	INCHES	MM
.XX	± .02	±
.XXX	± .010	±
ANGULAR	± 1/2°	
MATERIAL		
UNITS KA4C_MMT/KA4C_HTT KA4C_NP17/KA4C2.0NM, NP17-2	APPROVED	



HOPEWELL, NJ VENTURA, CA USA

## WIRING DIAGRAM

CODE IDENT. NO. 06223	SIZE A	DWG. NO. WD-175	REV C
SCALE 7/8=1	CAD. REF. WD000063	SHEET 1 OF 1	