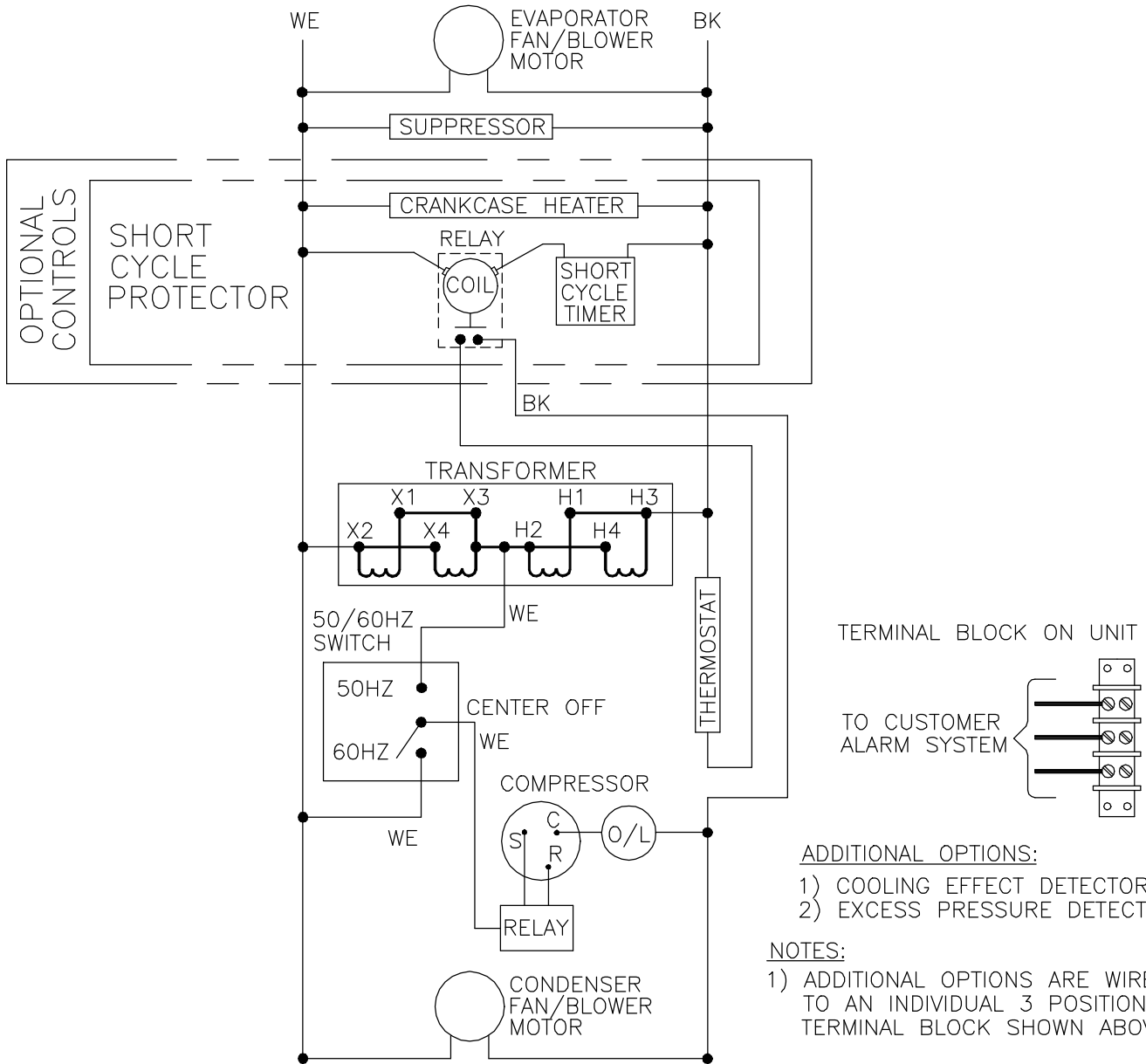


REVISIONS				
SYM	NOTICE	DESCRIPTION	DATE	APPROVED
-	ER 93/295	NEW DRAWING RELEASE	1/18/94	D W/MH
A	EC 96/83	CHG'D "X" & "H" DESIGNATIONS ON TRANSFORMER	4/1/96	TLR
B	EC 97/3	H2 WAS H4, H4 WAS H2	1/3/97	JMB

115 VOLT



- ADDITIONAL OPTIONS:**
- 1) COOLING EFFECT DETECTOR
 - 2) EXCESS PRESSURE DETECTOR

NOTES:

- 1) ADDITIONAL OPTIONS ARE WIRED TO AN INDIVIDUAL 3 POSITION TERMINAL BLOCK SHOWN ABOVE.

THIS DOCUMENT IS THE PROPERTY OF KOOLTRONIC, INC. AND CONTAINS PROPRIETARY AND CONFIDENTIAL INFORMATION WHICH MUST NOT BE DUPLICATED, USED OR DISCLOSED OTHER THAN AS EXPRESSLY AUTHORIZED BY KOOLTRONIC, INC.

ALL DIMENSIONS ARE IN INCHES, DIMENSIONS DESIGNATED MM ARE IN MILLIMETERS.

UNLESS OTHERWISE SPECIFIED TOLERANCES NON-ACCUMULATIVE		
TOL. ON	INCHES	MM
.XX	± .02	±
.XXX	± .010	±
ANGULAR		± 1/2°
MATERIAL		
UNITS	KAC1.0HS/56	

DRAWN	D. WALDRON	DATE	1/18/94
CHECKED	Martin H.		1/27/94
ENG.	S.R.		1/18/94
MFG. ENG.			
APPROVED			



WIRING DIAGRAM

CODE IDENT. NO.	SIZE	DWG. NO.	REV
06223	A	WD-177	B
SCALE	CAD. REF.	SHEET	
1=1	WD000065	1 OF 1	