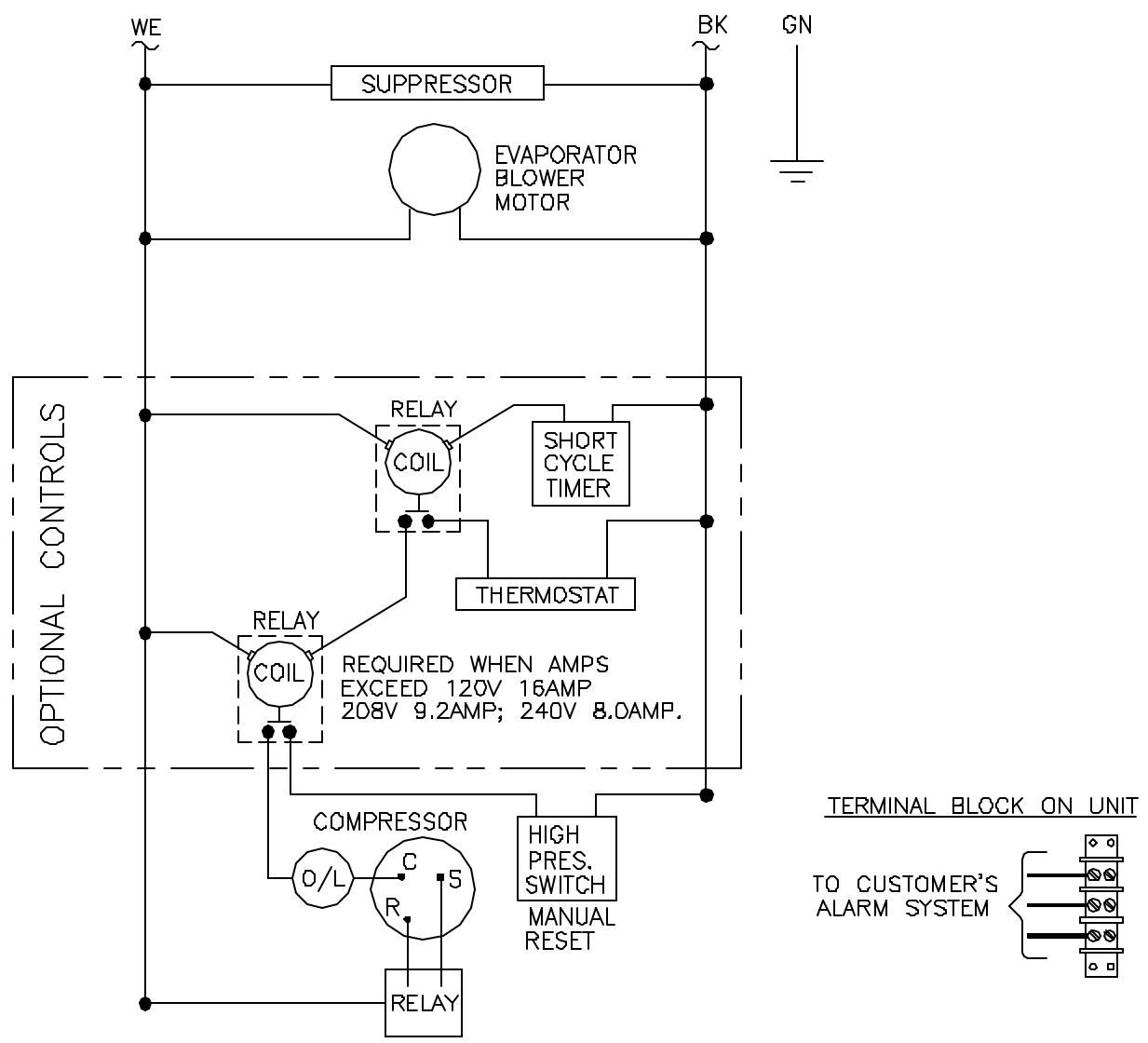


THIS DOCUMENT IS THE PROPERTY OF KOOLTRONIC, INC. AND CONTAINS PROPRIETARY AND CONFIDENTIAL INFORMATION WHICH MUST NOT BE DUPLICATED, USED OR DISCLOSED TO OTHERS, EXCEPT AS EXPRESSLY AUTHORIZED IN WRITING BY KOOLTRONIC, INC.

REVISIONS

SYM	NOTICE	DESCRIPTION	DATE	APPROVED
-	ER 94/225	NEW DRAWING RELEASE	08/23/94	RDG
A	ER 99/64	REMOVED EVAP BLOWER CAP. FROM DRAWING	5/7/99	JS




NOTES:

- 1) ADDITIONAL OPTIONS ARE WIRED TO AN INDIVIDUAL 3 POSITION TERMINAL BLOCK SHOWN ABOVE.
- 2) 50Hz: CONTACT KOOLTRONIC

ADDITIONAL OPTIONS:

- 1) AIRFLOW SWITCH
- 2) COOLING EFFECT DETECTOR
- 3) EXCESS PRESSURE DETECTOR

UNLESS OTHERWISE SPECIFIED TOLERANCES NON-ACCUMULATIVE			DRAWN Rob George	DATE 08/23/94
TOL ON	INCHES	MM	CHECKED	
.XX	± .02	±	ENG	
.XXX	± .010	±	MFG. ENG.	
ANGULAR		± 1/2°		
MATERIAL				
UNITS KA4C2-4WP28 & 36			APPROVED	



HOPEWELL, NJ VENTURA, CA USA

WIRING DIAGRAM

CODE IDENT. NO. 06223	SIZE A	DWG. NO. WD-189	REV A
SCALE 1=1	CAD. REF. WD000074	SHEET 1 OF 1	