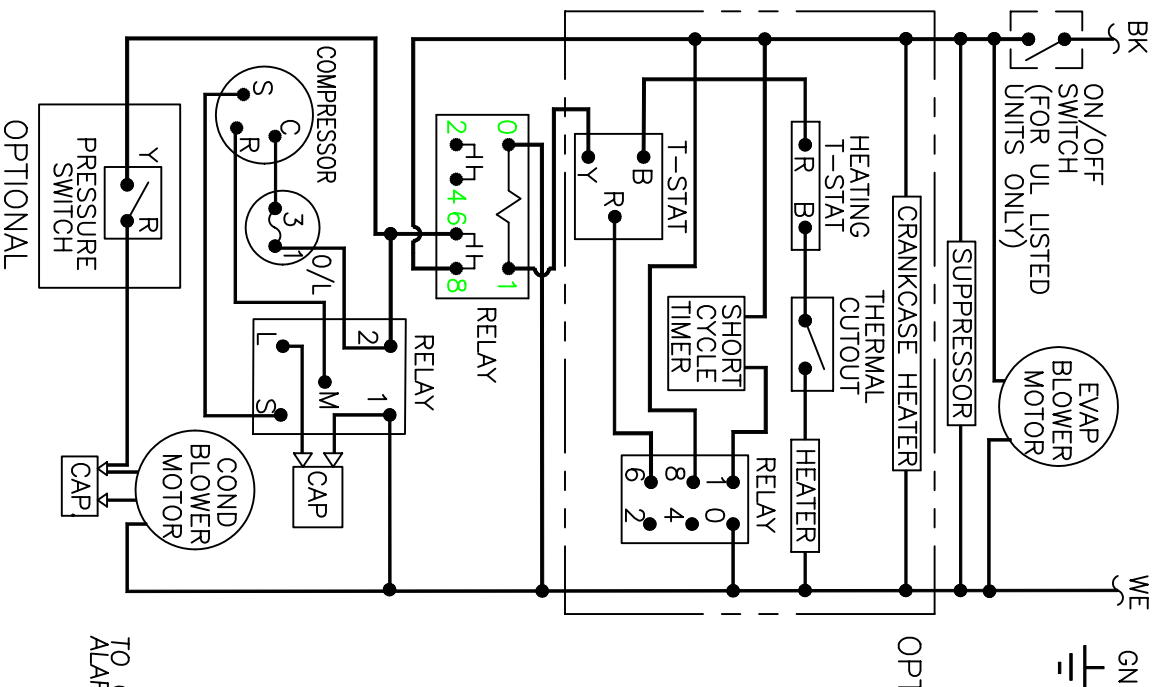


THIS DOCUMENT IS THE PROPERTY OF KOOLTRONIC, INC. AND CONTAINS PROPRIETARY AND CONFIDENTIAL INFORMATION WHICH MUST NOT BE DUPLICATED, USED OR DISCLOSED TO OTHERS, EXCEPT AS EXPRESSLY AUTHORIZED IN WRITING BY KOOLTRONIC, INC.

REVISIONS		DATE	APPROVED
SYM	NOTICE	DESCRIPTION	
-	ER 94/342	NEW DRAWING RELEASE	1/25/95 MJH
A	EC 95/155	ADDED OPTIONAL RELAY.	6/28/95 D W
B	ER 95/287	ADDED HEATER, T-STAT, & THERM. C/O TO OPTIONS	12/27/95 TLR
C	ER 96/29	ADDED ON/OFF SWITCH DETAIL	2/8/96 TLR
D	EC 96/53	MOVED SHORT CYCLE TIMER	3/4/96 TLR
E	EC 99/8	PICTORIALLY CHANGED RELAY TO OMRON RELAY SCHEMATIC FOR CORRECT REPRESENTATION	1/13/99 RL

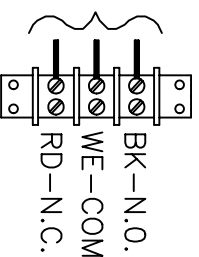


OPTIONAL

OPTIONAL

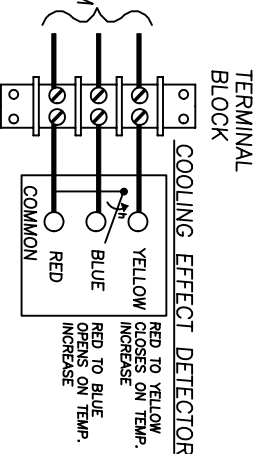
LOW AIR FLOW DETECTOR

TO CUSTOMER ALARM SYSTEM



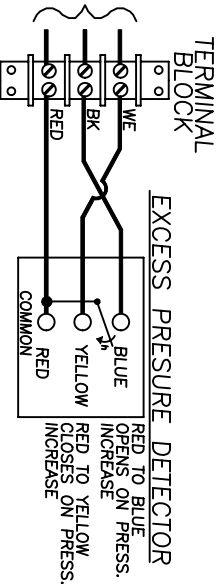
TERMINAL BLOCK

TO CUSTOMER ALARM SYSTEM



TERMINAL BLOCK  
RED TO YELLOW CLOSING ON TEMP. INCREASE  
RED TO BLUE OPENS ON TEMP. INCREASE

TO CUSTOMER ALARM SYSTEM



EXCESS PRESSURE DETECTOR  
RED TO BLUE CLOSING ON PRESS. INCREASE  
RED TO YELLOW CLOSING ON PRESS. INCREASE

ALL DIMENSIONS ARE IN INCHES, DIMENSIONS DESIGNATED MM ARE IN MILLIMETERS.

UNLESS OTHERWISE SPECIFIED TOLERANCES NON-ACCUMULATIVE		DRAWN	DATE
TOL. ON INCHES	MM	<i>MARTIN J. RICHSHORN</i>	09/26/94
.XX	±	CHECKED	M.E.M.
.XXX	± .010	ENG.	S.R.
ANGULAR	± 1/2°	MFG. ENG.	

MATERIAL	UNITS KA4C5-7P28, KA4C5-7P36	APPROVED
	K2A4C5-7P28, K2A4C5-7P36, KA4C6, OH5	

**KOOLTRONIC, Inc.**  
HOPEWELL, NJ VENTURA, CA USA

## WIRING DIAGRAM

CODE IDENT. NO. 06223	SIZE A	DWG. NO. WD-208	REV E
SCALE 1=1	CAD. REF. WD0000094	SHEET 1 OF 1	