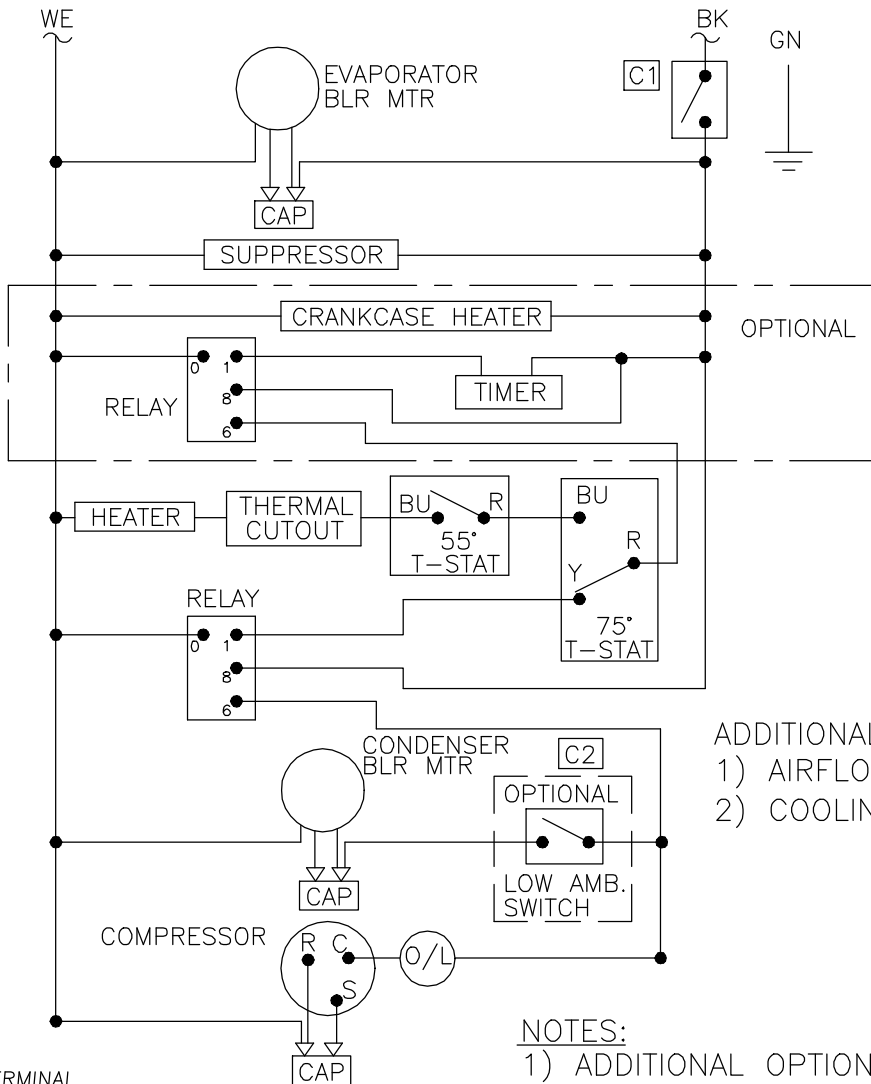


THIS DOCUMENT IS THE PROPERTY OF KOOLTRONIC, INC. AND CONTAINS PROPRIETARY AND CONFIDENTIAL INFORMATION WHICH MUST NOT BE DUPLICATED, USED OR DISCLOSED TO OTHERS, EXCEPT AS EXPRESSLY AUTHORIZED IN WRITING BY KOOLTRONIC, INC.

REVISIONS

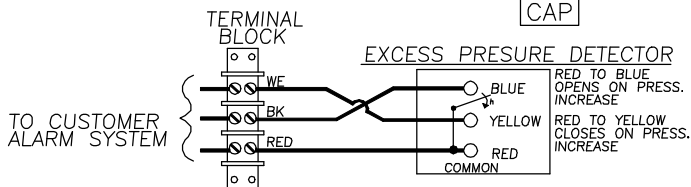
SYM	NOTICE	DESCRIPTION	DATE	APPROVED
-	ER 95/75	NEW DRAWING RELEASE	3/15/95	MJH/MM
A	ER 96/80	UPDATED RELAY	3/29/96	TLR
B	EC 96/134	ADD: SHORT CYCLE PROTECTION	5/29/96	JMB
C	EC 98/88	C1: ADD UL SWITCH, C2: ADD OPTIONAL LOW AMB. SWITCH, C3: ADD NOTE (3). C4: ADD UNIT K2A3C8P36LFHN-1	5/4/98	SDS



ADDITIONAL OPTIONS
 1) AIRFLOW SWITCH
 2) COOLING EFFECT DETECTOR

NOTES:

- ADDITIONAL OPTIONS ARE WIRED TO AN INDIVIDUAL 3 POSITION TERMINAL BLOCK AS SHOWN.
- 50Hz: CONTACT KOOLTRONIC
- CRANKCASE HEATER IS STANDARD WITH LOW AMBIENT SWITCH.



ALL DIMENSIONS ARE IN INCHES, DIMENSIONS DESIGNATED MM ARE IN MILLIMETERS.

UNLESS OTHERWISE SPECIFIED TOLERANCES NON-ACCUMULATIVE		
TOL. ON	INCHES	MM
.XX	± .02	±
.XXX	± .010	±
ANGULAR		± 1/2°
MATERIAL	[C4]	
UNITS	K2A3C8P36LFHN-1 K2AC10NP47-3	

DRAWN	MARTIN H IRCSSHOHN	DATE	1/11/94
CHECKED			
ENG.	S.R.		3/20/95
MFG. ENG.			
APPROVED	B.K.K.		3/20/95

HOPEWELL, NJ VENTURA, CA USA

WIRING DIAGRAM

CODE IDENT. NO.	SIZE	DWG. NO.	REV
06223	A	WD-211	C
SCALE 7/8=1	CAD. REF.	WD000097	SHEET 1 OF 1