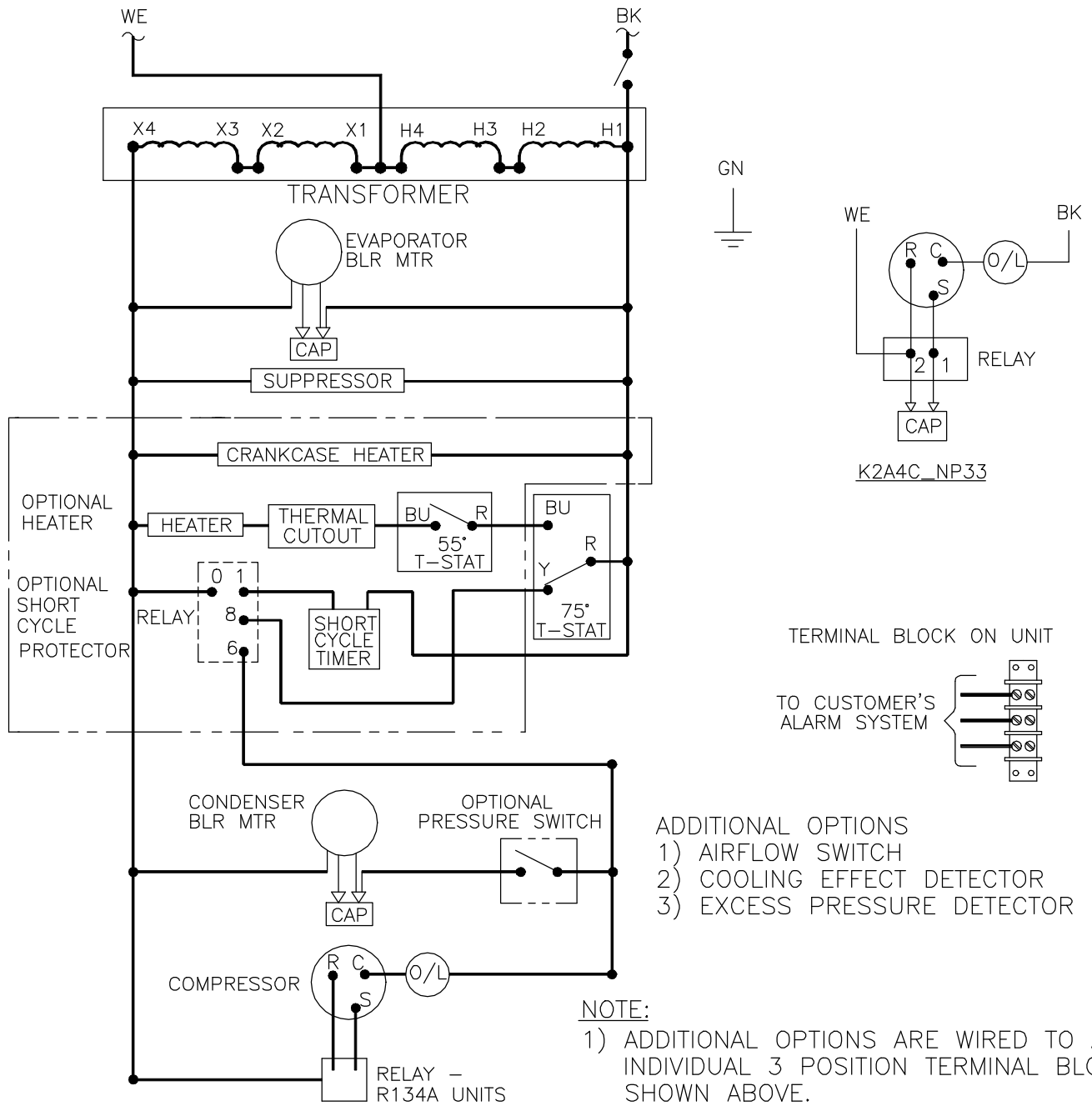


THIS DOCUMENT IS THE PROPERTY OF KOOLTRONIC, INC. AND CONTAINS PROPRIETARY AND CONFIDENTIAL INFORMATION WHICH MUST NOT BE DUPLICATED, USED OR DISCLOSED TO OTHERS, EXCEPT AS EXPRESSLY AUTHORIZED IN WRITING BY KOOLTRONIC, INC.

REVISIONS


SYM	NOTICE	DESCRIPTION	DATE	APPROVED
-	ER 98/87	NEW DRAWING RELEASE	4/20/98	SDS



- ADDITIONAL OPTIONS
- 1) AIRFLOW SWITCH
  - 2) COOLING EFFECT DETECTOR
  - 3) EXCESS PRESSURE DETECTOR

**NOTE:**  
1) ADDITIONAL OPTIONS ARE WIRED TO AN INDIVIDUAL 3 POSITION TERMINAL BLOCK SHOWN ABOVE.

UNLESS OTHERWISE SPECIFIED TOLERANCES NON-ACCUMULATIVE			DRAWN STEVE S.	DATE 4/20/98
TOL. ON	INCHES	MM	CHECKED	
.XX	± .02	±	ENG.	
.XXX	± .010	±	MFG. ENG.	
ANGULAR		± 1/2°		
MATERIAL				
UNITS	K2A4C4NP33L-3		APPROVED	



HOPEWELL, NJ VENTURA, CA USA

## WIRING DIAGRAM

CODE IDENT. NO.	SIZE	DWG. NO.	REV
06223	A	WD-364	-
SCALE 7/8=1	CAD. REF.	WD000250	SHEET 1 OF 1