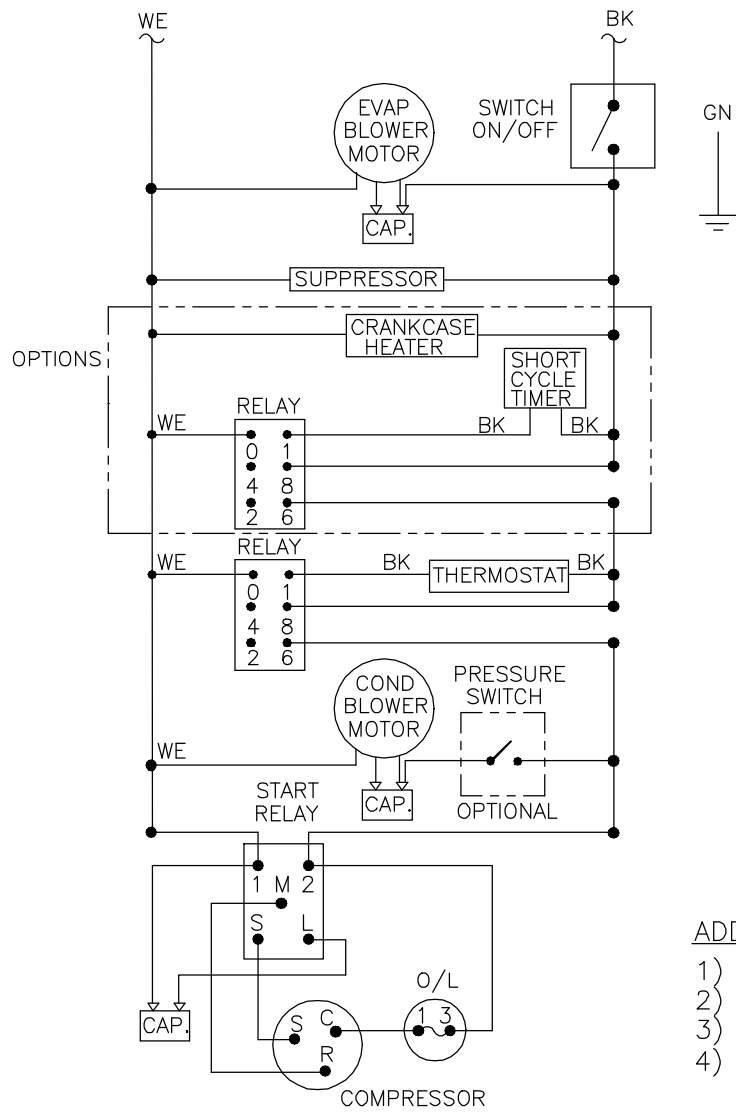


REVISIONS				
SYM	NOTICE	DESCRIPTION	DATE	APPROVED
-	EC 98/2	NEW DRAWING RELEASE	9/3/98	SDS


THIS DOCUMENT IS THE PROPERTY OF KOOLTRONIC, INC. AND CONTAINS PROPRIETARY AND CONFIDENTIAL INFORMATION WHICH MUST NOT BE DUPLICATED, USED OR DISCLOSED OTHER THAN AS EXPRESSLY AUTHORIZED BY KOOLTRONIC, INC.



ADDITIONAL OPTIONS

- 1) AIRFLOW SWITCH
- 2) COOLING EFFECT DETECTOR
- 3) EXCESS PRESSURE DETECTOR
- 4) 50Hz: CONTACT KOOLTRONIC

ALL DIMENSIONS ARE IN INCHES, DIMENSIONS DESIGNATED MM ARE IN MILLIMETERS.			
UNLESS OTHERWISE SPECIFIED TOLERANCES NON-ACCUMULATIVE		DRAWN STEVE S.	DATE 9/3/98
TOL. ON	INCHES	MM	CHECKED
.XX	± .02	±	ENG.
.XXX	± .010	±	MFG. ENG.
ANGULAR		± 1/2°	
MATERIAL			
UNITS	APPROVED		
K2A4C6NP36L			



HOPEWELL, NJ VENTURA, CA USA

WIRING DIAGRAM

CODE IDENT. NO.	SIZE	DWG. NO.	REV
06223	A	WD-408	-
SCALE	CAD. REF.	SHEET	1 OF 1
7/8=1	WD000291		