

# GUARDIAN & GUARDIANX DP33 NEMA 4 or 4X AIR CONDITIONERS

Model	NEMA Rating	UL/CUL Listed or Recognized	BTU/H Capacity	95/95 Rating BTU/H	Ambient Temp.		Volts	Hz	Running Amps	Approx. Weight lbs. kg.
					°F Max./Min	°C Max./Min				
KNA4C5DP33L	4	Listed	5000	4235	125/-20	52/-28	115/100	60/50	9.7/9.4	95 44
K2NA4C5DP33L	4	Listed	5000	4235	128/-20	53/-28	230/200	60/50	5.1/4.8	95 44
KNA4C5DP33LV	4X	Listed	5000	4235	125/-20	52/-28	115/100	60/50	9.7/9.4	95 44
K2NA4C5DP33LV	4X	Listed	5000	4235	128/-20	53/-28	230/200	60/50	5.1/4.8	95 44

115V 60 Hz models perform at reduced capacity when operated at 100V 50 Hz.  
Rating shown is for operation at maximum ambient temperature.

## STANDARD FEATURES

Baked Powder Finish (NEMA 4 models)  
Built-in Condensate Evaporator  
CFC-Free Refrigerant  
Closed-Loop Cooling  
Compressor Short Cycle Protector  
Condenser Impeller Speed Controller  
Epoxy-Coated Condenser and Evaporator Coils  
Filter  
Heavy-duty Steel Shell (NEMA 4 models)  
Internal Corrosion Protection (NEMA 4X models)  
NEMA 12, 3R and 4 or 4X Ratings Maintained (UL50)  
Programmable Temperature Alarm  
Programmable Thermostat  
Six-Foot [1.8m] (minimum) 3-Wire Power Cord  
Stainless Steel Shell (NEMA 4X models)  
UL/CUL Listed

Find additional information on this model at [kooltronic.com](http://kooltronic.com), or use the Technical Documents QR code below.

Technical Documents



## ACCESSORIES AND OPTIONS

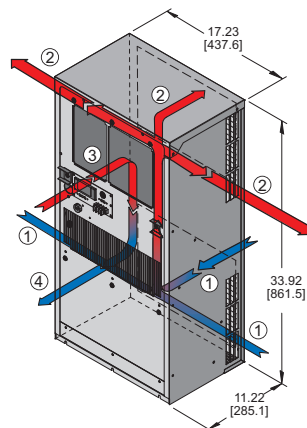
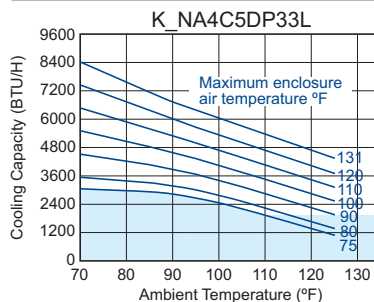
Adapter  
Enclosure Heater  
Filter Recoating Adhesive  
Internal Corrosion Protection (NEMA 4 models)  
Remote Monitoring  
Remote Thermostat Relay  
Replacement Filters  
Special materials or finishes  
Special motors, line cords or connectors



NEMA  
TYPE 4 OR 4X  
MAINTAINED

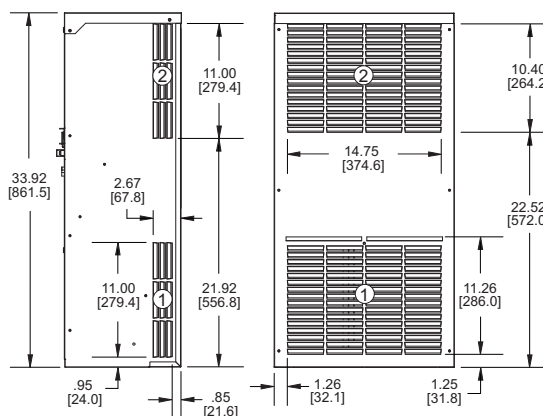
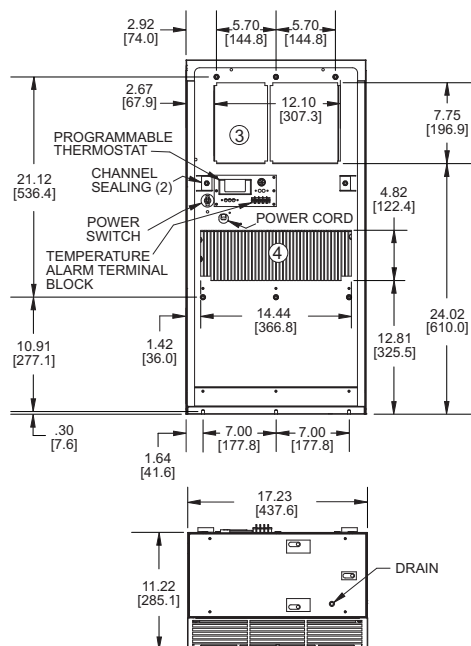


## PERFORMANCE

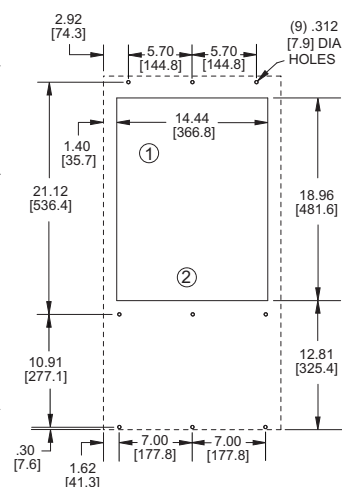


- ① CONDENSER AIR INLET (Ambient Air In)
- ② CONDENSER AIR OUTLET (Warm Ambient Air Out)
- ③ WARM AIR RETURN FROM ENCLOSURE
- ④ COOL AIR OUTLET TO ENCLOSURE

## DRAWINGS



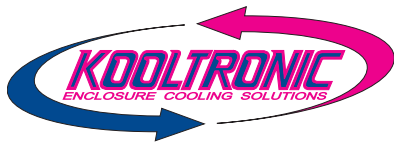
Many popular units are available as 3D solid models for customer system integration. Please contact Kooltronic for details.



MOUNTING PLAN

Dimensions, inches [mm], are for reference only and are subject to change.

dp33.qxd (10/23) (CDR: 20498)



## GUARDIAN & GUARDIANX DP33 NEMA 4 or 4X AIR CONDITIONERS

### DESCRIPTION

---

The **Guardian/GuardianX** Indoor/Outdoor Air Conditioners are designed specifically for **NEMA 4** and **4X** enclosure applications that require washdown or are subject to outdoor storm conditions. All **Guardian** models have a **NEMA 4** Rating, offering protection against the hazards of unwanted environmental penetration. The **GuardianX**, with the **NEMA 4X** Rating, is offered with a Stainless Steel Shell and Internal Corrosion Protection.

With Epoxy-coated condenser coils and a closed-loop cooling system, the **Guardian Series** offers added security by providing an operating environment safe from harsh ambient conditions.

The features engineered into all of the **Guardian Series** models make them a tamper-resistant choice for external applications. Combined with a NEMA 4 Rating, with all models UL/CUL Listed, the **Guardian Series** is an excellent choice for telecommunications or other outdoor cabinet applications.

### FEATURES AND BENEFITS (STANDARD)

---

All models UL and cUL Listed, a standard of safety.

Built-in condensate evaporator eliminates the need for a drain (normal operation\*).

CFC-free refrigerant provides a zero ozone depletion potential.

Closed-loop cooling provides stable temperature control while excluding dust and humidity from the electrical enclosure.

Compressor short-cycling protection extends compressor life.

Condenser impeller cycling provides stable capacity and temperature control.

Condenser filtration to maintain peak thermal performance extends compressor life.

Internal corrosion protection to increase reliability in hostile environments.

NEMA 12, 3R & 4 ratings for compatibility with listed electrical enclosures.

Programmable thermostat capable of remote monitoring and control.

Programmable temperature alarm to alert if early action required.

Stainless steel shell for NEMA 4X corrosive environments (NEMA 4X models).

Both evaporator and condenser coils are epoxy coated, prolonging unit life.

\* May not be adequate in extremely high humidity with open or leaky enclosure. Overflow condensate drain fitting and hose are included.

### FEATURES AND BENEFITS (OPTIONAL)\*

---

Enclosure heater eliminates damaging condensation, increasing reliability of electrical enclosure components.

Mounting adapter plates are offered to replace another manufacturer's unit.

Remote monitoring provides temperature data for warning of early action required. (Optional Feature on models with a Programmable Thermostat).

Remote thermostat relay for control by a user-supplied control system.

Special paint finishes.

\*Contact KOOLTRONIC for more information.

### REPLACEMENT FILTERS

---

The DP33L-LV filter Part No. 9501F (9.50" x 10.50" x 0.38" [241.3mm x 266.7mm x 9.7mm])

