

ACCESS SERIES DSP28

NEMA 12 & 3R AIR CONDITIONERS



NEMA
TYPE 3R, 12
MAINTAINED

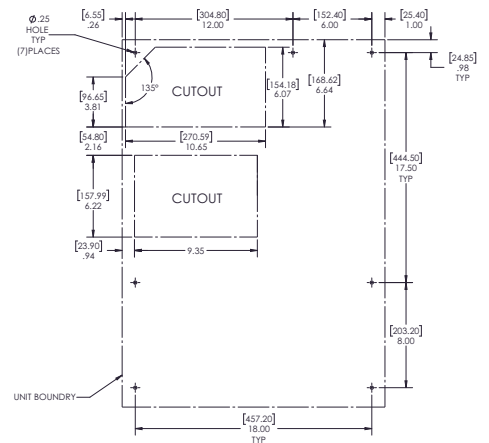
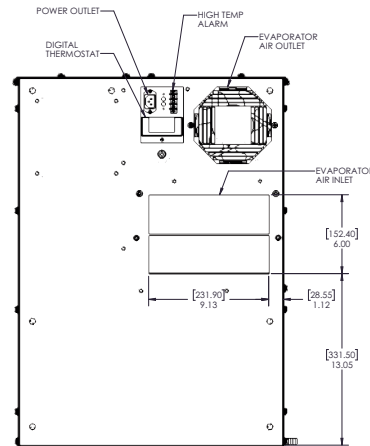
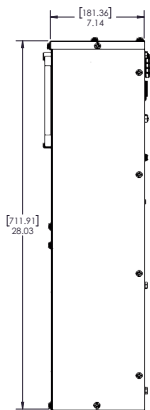
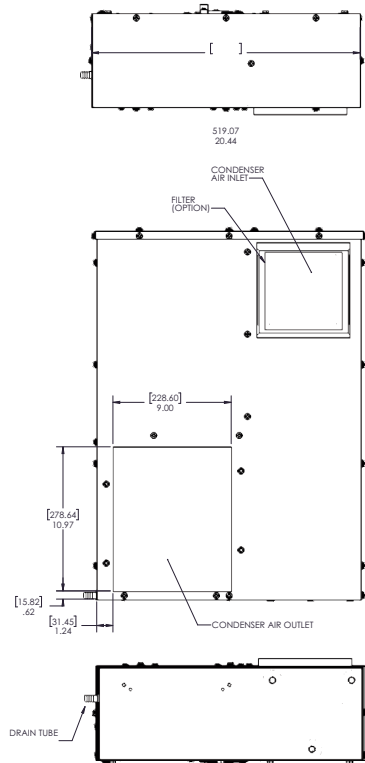
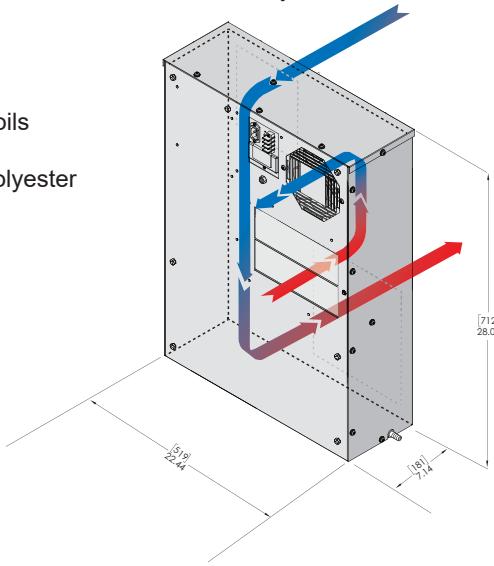


STANDARD FEATURES

- Built-in Condensate Evaporator
- CFC-Free Refrigerant
- Closed-Loop Cooling
- Compact Design/Slim Mounting Footprints
- Compressor Short Cycle Protector
- Condenser Impeller Cycling Control
- Epoxy-Coated Evaporator and Condenser Coils
- Filter
- Heavy-duty Steel Shell with ANSI 61 Gray Polyester Powder Coating
- NEMA 12 & 3R Rated (UL50)
- Programmable Temperature Alarm
- Programmable Thermostat
- UL/CUL Listed

ACCESSORIES AND OPTIONS

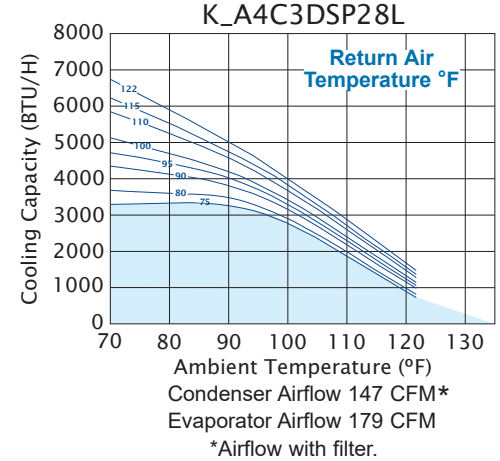
- Enclosure Heater
- Replacement Filters
- 304 Stainless Steel Shell (NEMA 4 & 4X)
- Remote Monitoring
- Remote Thermostat Relay



Model	NEMA Rating	BTU/h Capacity	95/95 Rating	Ambient Temp		Volts	Hz	Amps	Approx.	
				°F	°C				Running	Weight
KA4C3DSP28L	12,3R	3000	3560	122/-20	50/-29	115	60	7.6	75	34.02
K2A4C3DSP28L	12,3R	3000	3127	122/-20	50/-29	230	60	4.0	75	34.02
K2A4C3DSP28L	12,3R	3000	3116	122/-20	50/-29	200	50	4.4	75	0.00

Rating shown is for operation at maximum ambient temperature.

PERFORMANCE



Find additional information on this model at kooltronic.com, or use the Technical Documents QR code below.

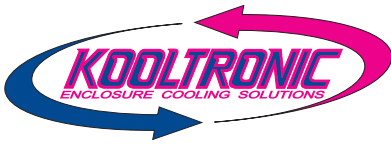
Technical Documents



Many popular units are available as 3D solid models for customer system integration. Please contact Kooltronic for details.

Dimensions, inches [mm], are for reference only and are subject to change.

dsp231.qxd (11/24) (CDR: 20540)



ACCESS SERIES DSP28 NEMA 12 & 3R AIR CONDITIONERS

DESCRIPTION

The **Access Series Air-Cooled Air Conditioners** are a new closed-loop enclosure cooling solution featuring an ultra-thin depth.

These models are specially engineered for self-service kiosks, ATMs and Digital Signage to improve operating efficiency and increase application longevity. The **Access Series** units are also suitable for mounting on doors of electrical enclosures found in many industrial applications.

The **Access Series DSP28** units are designed to meet a cooling capacity of 3,000 BTU/H and can be configured for applicable enclosure IP designations and voltage needs.

The **Access Series** models are constructed with a heavy-duty steel shell with ANSI gray polyester powder coating. The **Access Series** models are rated NEMA 12 & 3R.

FEATURES AND BENEFITS (STANDARD)

All models UL/CUL Listed, a standard of safety.

Built-in condensate evaporator eliminates the need for a drain (normal operation*).

CFC-free refrigerant provides a zero ozone depletion potential.

Closed-loop cooling provides stable temperature control while excluding dust and humidity from the electrical enclosure.

Compressor short cycle protector extends compressor life.

Condenser impeller cycling provides stable capacity and temperature control.

Epoxy-coated evaporator and condenser coils

Heavy-duty Steel Shell with powder-baked finish (ANSI 61 gray)

Programmable thermostat capable of remote monitoring and control.

Programmable temperature alarm to alert if early action is required.**

Internal corrosion protection to increase reliability in hostile environments.

NEMA 12 & 3R ratings for compatibility with listed electrical enclosures.

Both evaporator and condenser coils are epoxy coated, prolonging unit life.

* May not be adequate in extremely high humidity with open or leaky enclosure. Overflow condensate drain fitting and hose are included.

** Not available if heater option is chosen.

FEATURES AND BENEFITS (OPTIONAL)*

Enclosure heater eliminates damaging condensation, increasing reliability of electrical enclosure components.

304 stainless steel shell (NEMA 4 & 4X)

Remote monitoring provides temperature data for warning of early action required.

Remote thermostat relay for control by a user-supplied control system.

Special paint finishes*

*Contact KOOLTRONIC for more information.

REPLACEMENT FILTERS

The DSP28L Filter Part No. is 681F (6.81" x 6.81" x 0.38" [173.0mm x 173.0mm x 9.7mm]).

