

INTREPID K2A6C30EP56TR-4 AIR-COOLED PANEL-MOUNTED AIR CONDITIONERS

TECHNICAL DATA

Model	BTU/H Capacity	95/95 Rating BTU/H	Ambient Temp.		Volts	Hz	Cooling Amps	Approx. Weight	
			°F	°C				lbs.	kg.
			Max./Min	Max./Min					
K2A6C30EP56TR-4	30000	28000	131/0	55/-17	208/230	60/60	27.0/23.0	384	175

Rating shown is for operation at maximum ambient temperature.

STANDARD FEATURES

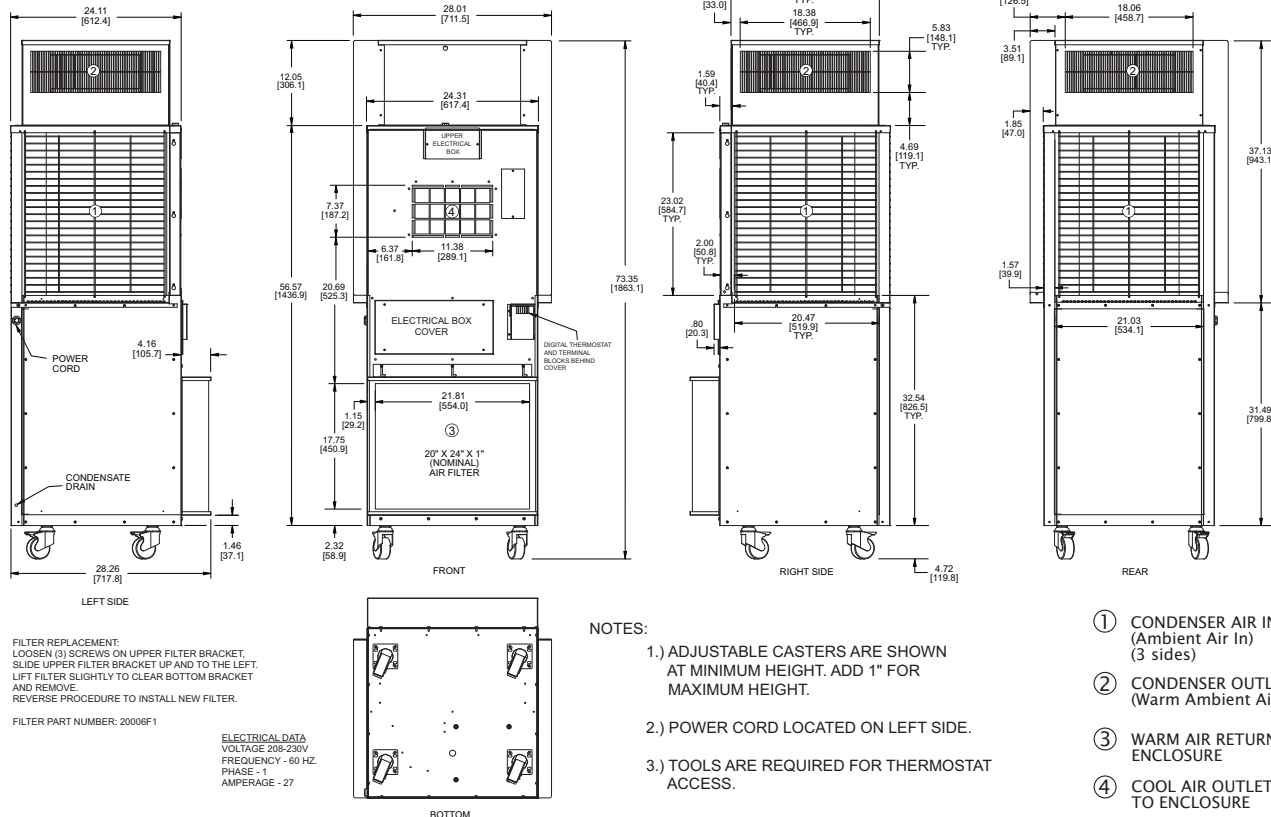
Adjustable Casters
Baked Powder Finish
Blygold PoluAl XT Coil Coating
Closed-Loop Cooling
Condenser Fan Controller
Compressor Crankcase Heater
Compressor Short Cycle Protection
Condensate Pump
Evaporator Air Filter - 4" (P/N: 20006F1)
Heavy-duty Steel Shell
Low Temperature Control Thermostat
Remote Communications (Modbus)
Remote Thermostat Relay
Tamper Resistant Thermostat Guard
Temperature Alarm
UL/CUL Listed
Zero ODP Refrigerant

ACCESSORIES AND OPTIONS

Internal Corrosion Protection
Replacement Filters (P/N: 20006F1)



Many popular units are available as 3D solid models for customer system integration. Please contact Kooltronic for details.



Dimensions, inches [mm], are for reference only and subject to change.

ep56tr-4.qxd (10/23) (CDR: 20532)



INTREPID K2A6C30EP56TR-4 AIR-COOLED PANEL-MOUNTED AIR CONDITIONERS

DESCRIPTION

Air conditioners designed specifically for cooling electronic enclosures that can be used for both indoor and outdoor applications right out of the box!

Expertly designed and crafted, the **INTREPID Series** boasts a stylish appearance with a baked powder finish to blend easily with contemporary enclosure designs.

Designed to dramatically reduce noise levels, the unit utilizes a condenser fan control and has the compressor located in the evaporator compartment. These features combine with special motors and coils to produce worry free, efficient operation both indoors and outdoors.

Servicability has been made easier by incorporating a "knock-down" sheetmetal design which provides quick access to internal components.

Standard features include heavy duty galvanized steel construction with baked-on powder paint, environmentally friendly refrigerants and thermostatic low temperature control.

KOOLTRONIC also designs and manufactures a variety of Air Conditioners to meet *unique* specifications. We invite your inquiries about our modification and custom-design capabilities.

STANDARD FEATURES

BAKED POWDER FINISH: Durable, baked-on powder finish is standard.

CASTERS: The unit is equipped with four adjustable height casters which allow for 1" of height variation. The casters feature 360° swivel and integral brakes.

CLOSED-LOOP COOLING: The enclosure interior airflow system is isolated from the ambient airflow system. Ambient air can not invade the cool, dehumidified sensitive component compartment.

CONDENSER FAN CONTROLLER: A pressure switch located in the discharge line cycles the condenser fan to help maintain system pressure during low ambient or load conditions. This reduces compressor cycling and the possibility of freezing.

COMPRESSOR CRANKCASE HEATER: A heater attached to the compressor crankcase to maintain appropriate temperatures during cold operating conditions.

CORROSION PROTECTION: Condenser and evaporator coils coated with BLYGOLD POLUAL XT to resist corrosion.

DUAL MODE TEMPERATURE CONTROL: In addition to the internal thermostat, the unit is equipped with provisions which allow an external 24VAC thermostat to be connected. A toggle switch inside the electrical box allows the control to be switched from internal to external mode. The display, alarm and communication functions of the internal thermostat remain active in both modes.

HIGH PRESSURE SAFETY SWITCH: Helps to protect the compressor and hermetic system from damage due to excessive discharge pressures.

INSULATION: All cold components, lines and the evaporator compartment are insulated with high-performance insulation for maximum efficiency.

LOW TEMPERATURE CONTROL: Thermostatic Low Temperature Control prevents over-cooling and provides energy-efficient operation.

MOTORS: All fan motors are UL/CSA Recognized and include automatic-reset thermal overload protection and double-sealed or double-shielded precision ball bearings. Special permanent lubricants in the tube axial fans perform over a broad temperature range: -20°F [-28.9°C] to 250°F [121.1°C].

POWER: 208V - 1PH - 60 Hz.

POWER CORD: All models have six foot [1.8m] (maximum) 3-wire power cord.

POWER LOSS DELAYED COMPRESSOR START: Protects the compressor from possible damage due to harmful short cycling, by initiating an "off" period before resumption of normal operation. Generally air conditioners require several minutes off for compressor protection after power interruptions of any type. These power interruptions can include power failures, opening of interlocked access doors, and cases where a thermostat activates the compressor in less than a few minutes. This option is particularly recommended for applications where frequent, brief power failures occur, interlocked cabinet doors are utilized, or where the cabinet internal loads fluctuate across a wide range.

QUALITY ASSURANCE: Refrigeration system components are kept sealed until charged with refrigerant; all brazed joints are thoroughly leak-tested; each unit is functionally tested before shipment.

REFRIGERANT: Zero Ozone Depleting Potential (ODP) R410a Refrigerant is used in all **Intrepid EP56 Series** Air Conditioners.

RUGGED CONSTRUCTION: Precision-engineered heavy gauge steel construction of all cabinets and blowers ensures Air Conditioners will stand up under tough applications.

TEMPERATURE ALARM: A thermostat is mounted inside the cabinet and attached to a sensor in the warm air return. When the air temperature increases to the set point, a signal is sent to a terminal block. User-installed wiring from the terminal block to local and/or remote warning devices (*light, bell, siren, etc.*) can be for normally open or closed operation.

UL LISTED: All **Intrepid EP56TR-4** models are *UL Listed*.

ACCESSORIES AND OPTIONS**

FACTORY-INSTALLED OPTIONS:

ENCLOSURE HEATER: 3 KW open air heater, used to maintain desired internal enclosure temperature under cold operating conditions.

INTERNAL CORROSION PROTECTION: For corrosive or other hostile environments, special coating material is applied to copper lines, coils and other parts subject to damage.

SPECIAL PAINT FINISHES**

**Contact KOOLTRONIC for information.

