



INTREPID EP56 AIR-COOLED PANEL-MOUNTED AIR CONDITIONERS

TECHNICAL DATA

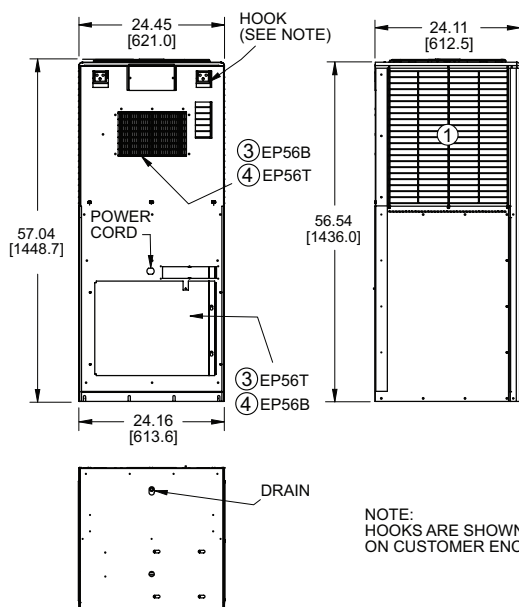
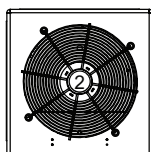
Model	UL/CUL Listed or Recognized	BTU/H Capacity	95/95 Rating BTU/H	Ambient Temp.		Volts	Hz	Cooling Amps	Heating Amps	Approx. Weight	
				°F	°C					lbs.	kg.
				Max./Min	Max./Min						
K2A6C30EP56TR	Recognized	30000/24000	28000/22000	131/0	55/-17	230	60/50	25.5/25.2	15.3	302	138
K2A6C30EP56BR	Recognized	30000/24000	28000/22000	131/0	55/-17	230	60/50	25.5/25.2	15.3	304	139

Rating shown is for operation at maximum ambient temperature.
230V models with Short Cycle Protector are not RoHS compliant.
TR in model number is Top Evaporator Discharge.
BR in model number is Bottom Evaporator Discharge.

STANDARD FEATURES

Available in either top or bottom
evaporator air discharge models
Baked Powder Finish
Closed-Loop Cooling
Compressor Short Cycle Protector
Condenser Blower Controller
Crankcase Compressor Heater
Heavy-duty Steel Shell
Internal Corrosion Protector
Programmable Temperature Alarm
Programmable Thermostat
NEMA 3R, 12 & 1 Ratings Maintained (UL50)
Six-Foot [1.8m] (minimum) 3-Wire Power Cord
Tamper-resistant hardware
UL Recognized
Zero ODP Refrigerant

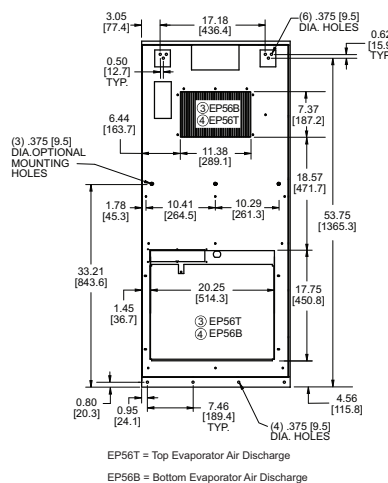
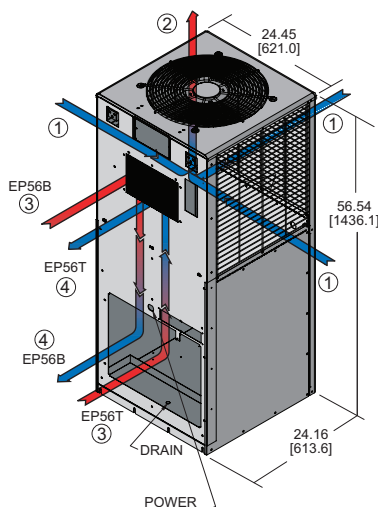
Many popular units are available as 3D solid
models for customer system integration.
Please contact Kooltronic for details.



NOTE:
HOOKS ARE SHOWN MOUNTED
ON CUSTOMER ENCLOSURE

ACCESSORIES AND OPTIONS

Enclosure Heater
Filter Recoating Adhesive
Remote Monitoring
Remote Thermostat Relay
Replacement Filters
Special materials or finishes
Special Motors, line cords or connectors
Temperature Alarm



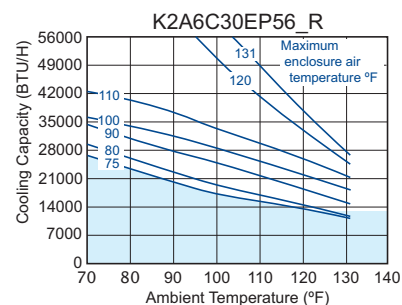
EP56T = Top Evaporator Air Discharge
EP56B = Bottom Evaporator Air Discharge



NEMA
TYPE 3R, 12 & 1
MAINTAINED



PERFORMANCE



Operation within shaded area not recommended.

Find additional information on this
model at kooltronic.com, or use the
Technical Documents QR code
below.

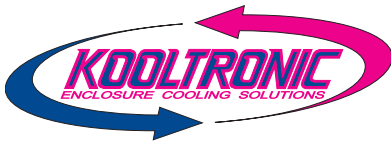
Technical
Documents



- ① CONDENSER AIR INLET
(Ambient Air In)
- ② CONDENSER OUTLET
(Warm Ambient Air Out)
- ③ WARM AIR RETURN FROM
ENCLOSURE
- ④ COOL AIR OUTLET
TO ENCLOSURE

Dimensions, inches [mm], are for reference only and subject to change.

ep56.qxd (10/23) (CDR: 20532)



INTREPID EP56 AIR-COOLED PANEL-MOUNTED AIR CONDITIONERS

DESCRIPTION

Air conditioners designed specifically for cooling electronic enclosures that can be used for both indoor and outdoor applications right out of the box!

Expertly designed and crafted, the **INTREPID Series** boasts a stylish appearance with rounded edges and a baked powder finish to blend easily with contemporary enclosure designs.

Designed to dramatically reduce noise levels, the unit utilizes condenser fan speed control and has the compressor located in the evaporator compartment. These features combine with special motors and coils to produce worry free, efficient operation both indoors and outdoors.

Servicability has been made easier by incorporating a “knock-down” sheetmetal design which provides quick access to internal components.

Standard features include programmable thermostat, programmable temperature alarm and environmentally friendly refrigerants.

KOOLTRONIC also designs and manufactures a variety of Air Conditioners to meet *unique* specifications. We invite your inquiries about our modification and custom-design capabilities.

FEATURES AND BENEFITS (STANDARD)

All models UL/CUL Listed, a standard of safety.

CFC-free refrigerant provides a zero ozone depletion potential.

Closed-loop cooling provides stable temperature control while excluding dust and humidity from the electrical enclosure.

Compressor short-cycling protection extends compressor life.

Condenser filtration to maintain peak thermal performance extends compressor life.

Internal corrosion protection to increase reliability in hostile environments.

NEMA 12, 3R & 4 ratings for compatibility with listed electrical enclosures.

Programmable thermostat capable of remote monitoring and control is available.

Programmable temperature alarm to alert if early action required.

Tamper-resistant hardware offers unit security..

FEATURES AND BENEFITS (OPTIONAL)*

Enclosure heater eliminates damaging condensation, increasing reliability of electrical enclosure components.

Mounting adapter plates are offered to replace another manufacturer's unit.

Remote monitoring provides temperature data for warning of early action required.

Remote thermostat relay for control by a user-supplied control system.

Special paint finishes.

*Contact KOOLTRONIC for more information.

