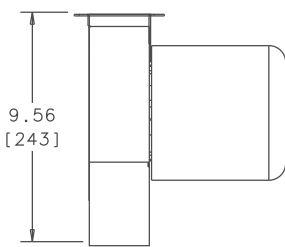
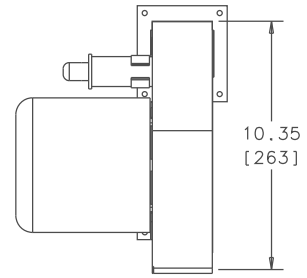
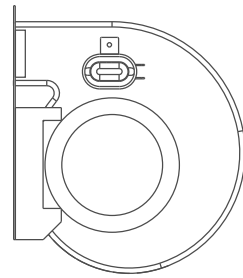
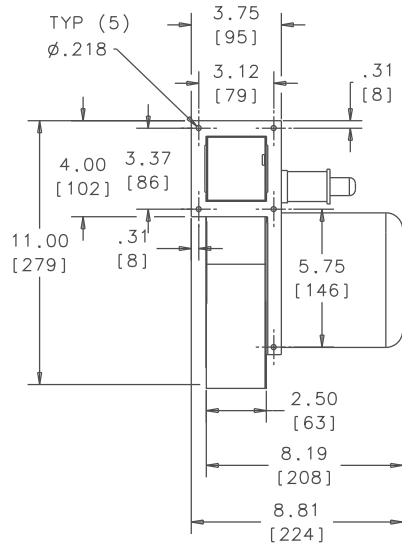
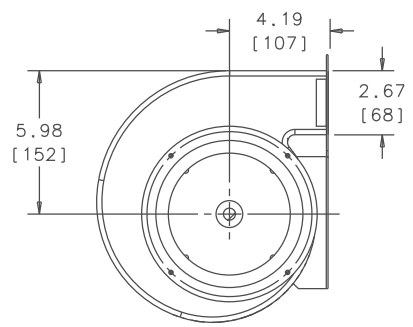
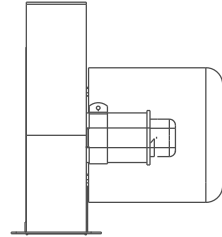
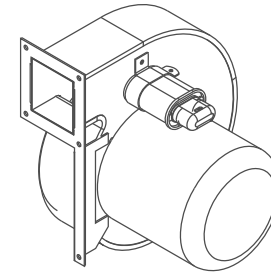


THIS DOCUMENT IS THE PROPERTY OF KOOLTRONIC, INC. AND CONTAINS PROPRIETARY AND CONFIDENTIAL INFORMATION WHICH MUST NOT BE DUPLICATED, USED OR DISCLOSED TO OTHERS, EXCEPT AS EXPRESSLY AUTHORIZED IN WRITING BY KOOLTRONIC, INC.

REVISIONS				
SYM	NOTICE	DESCRIPTION	DATE	APPROVED
-		PRELIMINARY DRAWING	2/14/00	RL

A  
B  
C  
D  
E  
F

A  
B  
C  
D  
E  
F



UNLESS OTHERWISE SPECIFIED TOLERANCES NON-ACCUMULATIVE				DRAWN		DATE	
TOL. ON	INCHES	MM		R. LIEDTKA		2/14/00	
.XX	± .02	±		CHECKED			
.XXX	± .010	±		ENG.			
ANGULAR		± 1/2 °		MFG. ENG.			
MATERIAL				APPROVED			
UNIT							

 HOPEWELL, NJ VENTURA, CA USA			
TITLE GENERAL ARRANGEMENT KBB63			
CODE IDENT. NO.	SIZE	DWG. NO.	REV
06223	C	KBB63	-
SCALE .25 = 1	CAD. REF.	SHEET	1 OF 1