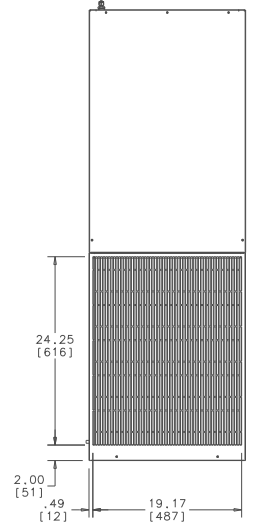
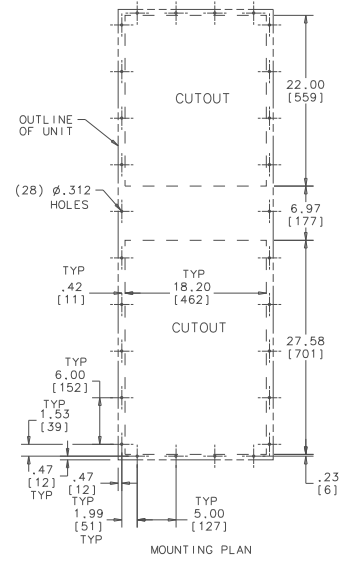
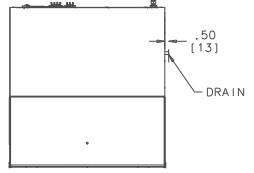
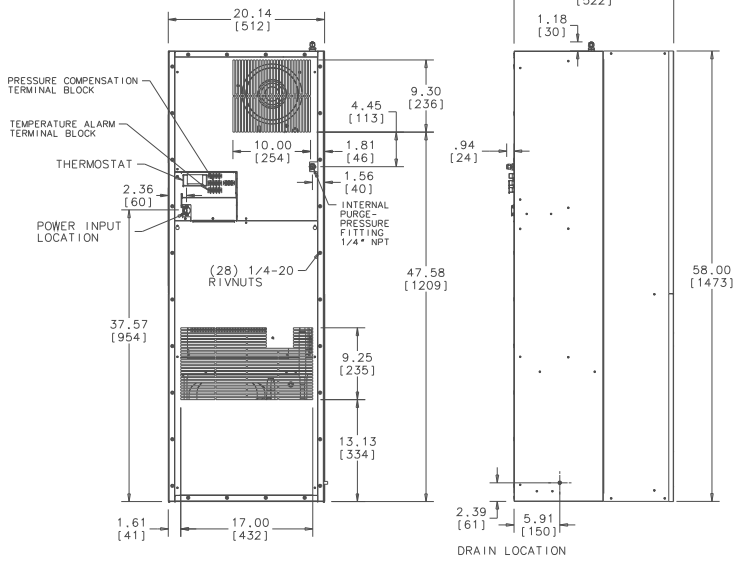
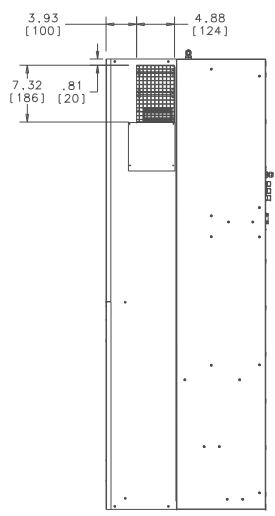
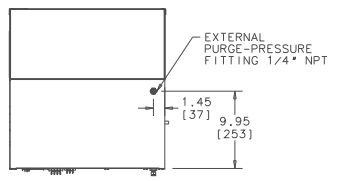
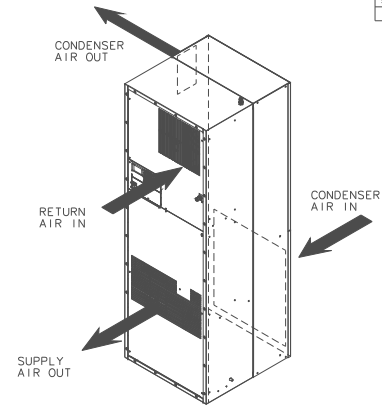


THIS DOCUMENT IS THE PROPERTY OF KOOLTRONIC, INC. AND CONTAINS PROPRIETARY AND CONFIDENTIAL INFORMATION WHICH MUST NOT BE DUPLICATED, USED OR DISCLOSED TO OTHERS, EXCEPT AS EXPRESSLY AUTHORIZED IN WRITING BY KOOLTRONIC, INC.

REVISIONS		DATE	APPROVED
5/1	NOTICE		
-	ER 14/053	NEW DRAWING RELEASE	6/6/16 JS



ALL DIMENSIONS ARE IN INCHES. DIMENSIONS DESIGNATED MM ARE IN MILLIMETERS.				DRAWN		DATE		
UNLESS OTHERWISE SPECIFIED TOLERANCES NON-ACCUMULATIVE.				JERRY STEDNICK		8/25/15		
TOL. ON	INCHES	MM	CHECKED	ENGINEER				
.XX	: .02	:	Steve Schmierer	6/6/16				
.XXX	: .010	:	Jim Disler	6/6/16				
ANGULAR	: 1/2			MFG. ENG.				
MATERIAL				CODE IDENT. NO. SIZE DWG. NO. REV				
UNIT K3A6C18HL58LV				APPROVED Joe Milko 6/7/16				06223 D GA202058A -
				SCALE: 1:25x1 CAD. REF. SHEET 1 OF 1				



GENERAL ARRANGEMENT