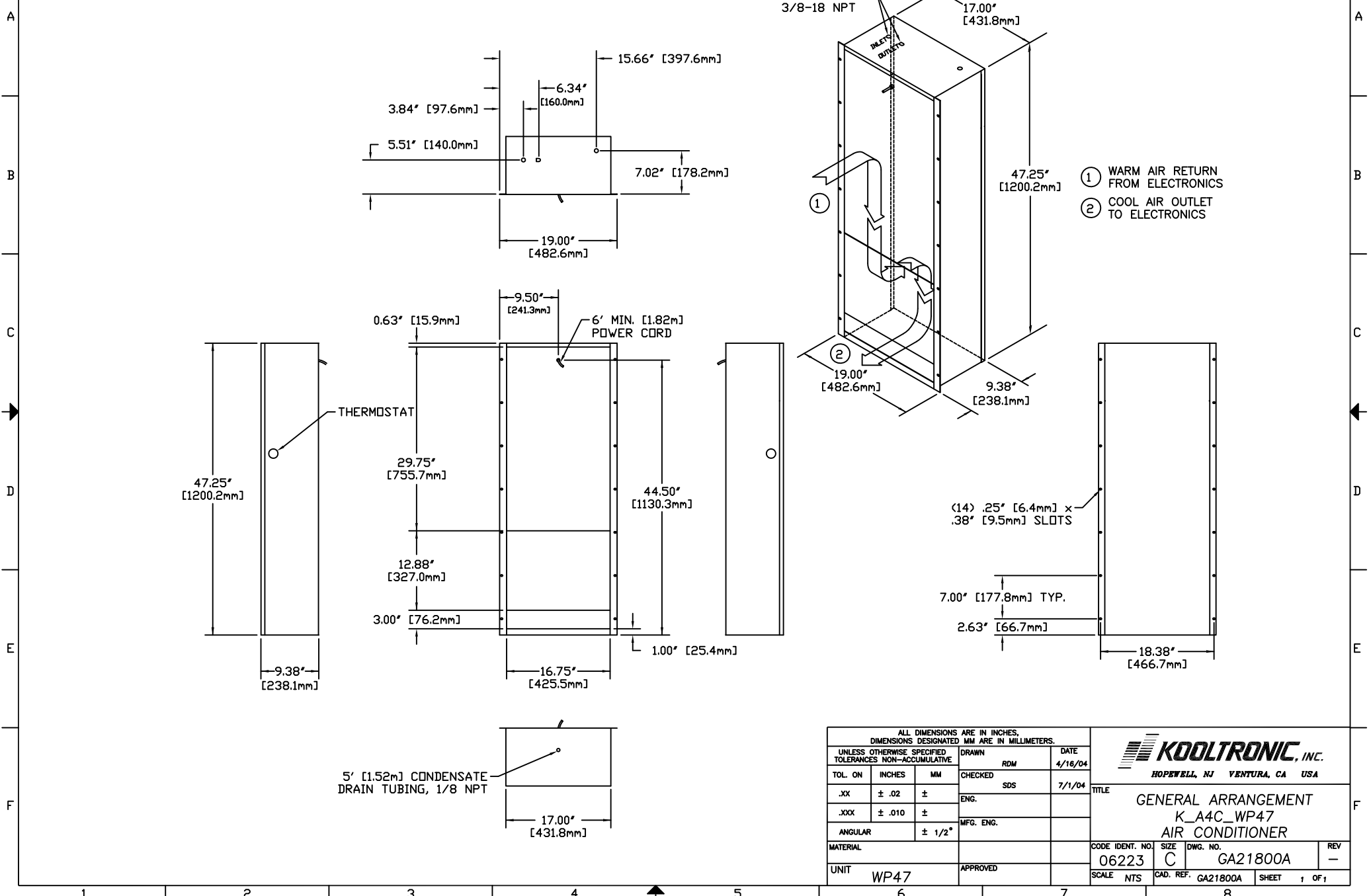


THIS DOCUMENT IS THE PROPERTY OF KOOLTRONIC, INC. AND CONTAINS PROPRIETARY AND CONFIDENTIAL INFORMATION WHICH MUST NOT BE DUPLICATED, USED OR DISCLOSED OTHER THAN AS EXPRESSLY AUTHORIZED BY KOOLTRONIC, INC.

| REVISIONS | | | | |
|-----------|-----------|---------------------|----------|----------|
| SYM | NOTICE | DESCRIPTION | DATE | APPROVED |
| - | EC 04/129 | NEW DRAWING RELEASE | 03/30/04 | RDM |



| UNLESS OTHERWISE SPECIFIED TOLERANCES NON-ACCUMULATIVE | | | | | DRAWN | DATE |
|--|--------|--------|-----------|-----|---------|------|
| TOL. ON | INCHES | MM | CHECKED | RDM | 4/16/04 | |
| .XX | ± .02 | ± | ENG. | SDS | 7/1/04 | |
| .XXX | ± .010 | ± | ENG. | | | |
| ANGULAR | | ± 1/2° | MFG. ENG. | | | |
| MATERIAL | | | APPROVED | | | |
| UNIT | WP47 | | | | | |

KOOLTRONIC, INC.
 HOPEWELL, NJ VENTURA, CA USA

TITLE
**GENERAL ARRANGEMENT
 K_A4C_WP47
 AIR CONDITIONER**

| | | | |
|--------------------------|-----------------------|----------------------|----------|
| CODE IDENT. NO. 06223 | SIZE C | DWG. NO. GA21800A | REV - |
| SCALE NTS | CAD. REF. GA21800A | SHEET 1 | OF 1 |