



COMPACT SERIES HORIZONTAL AIR-COOLED TOP-MOUNTED AIR CONDITIONERS

w/ s/n M17A4068 and above

TECHNICAL DATA

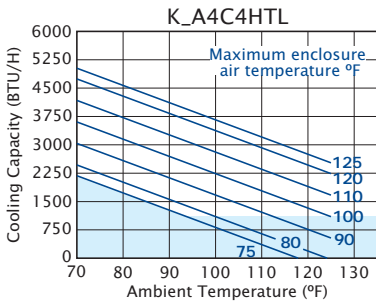


Model	UL/CUL Listed or Recognized	95/95 BTU/H Capacity	Ambient Temp.		Volts	Hz	Running Amps	Fuse Size (Amps)	Approx. Weight		
			BTU/H Rating	°F Max./Min					°C Max./Min	lbs.	kg.
KA4C4HTL	Recognized	4000	3442	122/50	50/10	115/100	60/50	10.0	15	85	39
K2A4C4HTL	Recognized	4000	2984	125/50	52/10	230/200	60/50	5.0	15	85	39

Rating shown is for operation at maximum ambient temperature.



PERFORMANCE

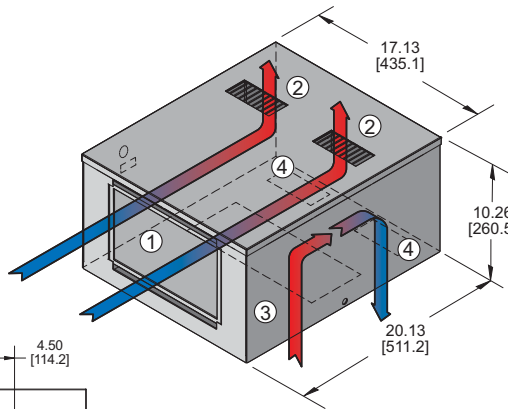


STANDARD FEATURES

- Built-in Condensate Evaporator
- CFC-Free Refrigerant
- Closed-Loop Cooling
- Compressor Short Cycle Protector
- Filter
- Low Ambient Kit
- Programmable Temperature Alarm
- Programmable Thermostat
- UL/CUL Recognized

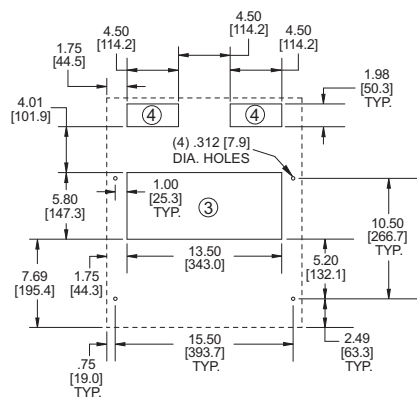
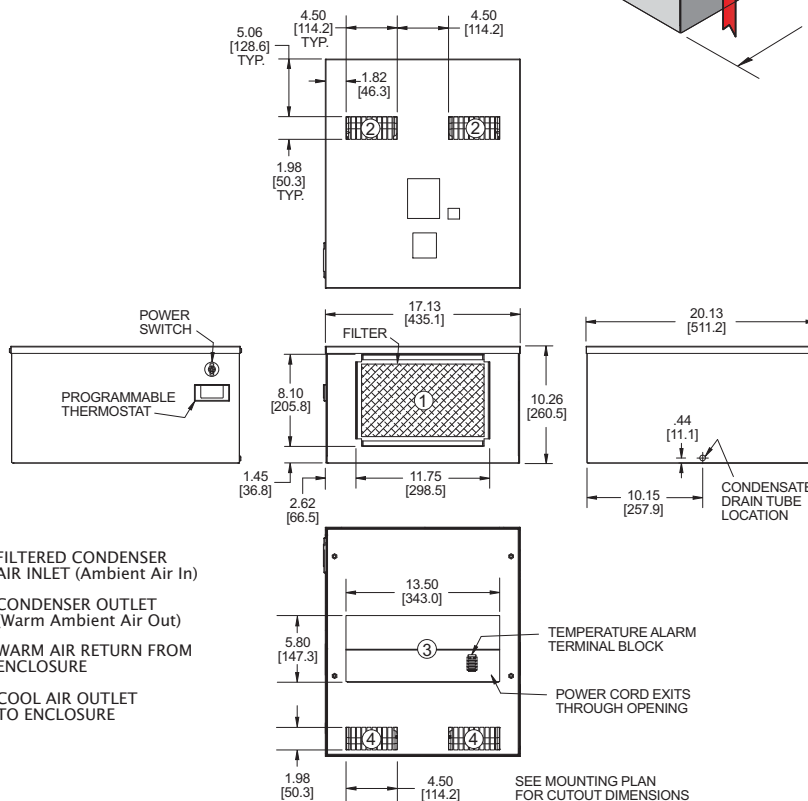
ACCESSORIES AND OPTIONS

- Filter Recoating Adhesive
- Internal Corrosion Protection
- Lifting Eyes
- Remote Monitoring
- Remote Thermostat Relay
- Replacement Filters
- Special controls or indicators
- Special materials or finishes
- Special motors, line cords or connectors
- Stainless or Aluminum Shell



Find additional information on this model at kooltronic.com, or use the Technical Documents QR code below.

Technical Documents



MOUNTING PLAN

Many popular units are available as 3D solid models for customer system integration. Please contact Kooltronic for details.

Dimensions, inches [mm], are for reference only and subject to change.

htcmp.qxd (10/29/21) (CDR: 20369)



COMPACT SERIES HORIZONTAL AIR-COOLED TOP-MOUNTED AIR CONDITIONERS w/ s/n M17A4068 and above

DESCRIPTION

KOOLTRONIC *Horizontal Top-Mounted Air Conditioners* provide a full range of cooling capacities where space or other limitations prevent panel or internal rack mounting.

The low profile **Compact Series** is recommended for lower to moderate-demand cooling applications in smaller enclosures.

Outdoor or corrosive environments require weather protection and/or special internal and external protective features.

For extreme ambient temperatures and/or severely contaminated environments, the use of **Water-Cooled Air Conditioners** is recommended.

KOOLTRONIC also designs and manufactures a variety of Air Conditioners to meet *unique* specifications. We invite your inquiries about our modification and custom-design capabilities.

FEATURES AND BENEFITS (STANDARD)

All models UL/CUL Recognized.

Built-in condensate evaporator eliminates the need for a drain (normal operation*).

CFC-free refrigerant is used in all H9 Air Conditioners.

Closed-loop cooling provides stable temperature control while excluding dust and humidity from the electrical enclosure.

Compressor short-cycling protection extends compressor life.

Low Ambient Kit maintains sufficient operating pressures when ambient temperatures drop below 50°F [10°C].

Programmable temperature alarm to alert if early action required.

Programmable thermostat capable of remote monitoring and control.

Both evaporator and condenser coils are epoxy coated, prolonging unit life.

* May not be adequate in extremely high humidity with open or leaky enclosure. Overflow condensate drain fitting and hose are included.

FEATURES AND BENEFITS (OPTIONAL)*

Aluminum Shell if light weight and/or compatibility with aluminum enclosures is required.

Enclosure heater eliminates damaging condensation, increasing reliability of electrical enclosure components.

Remote monitoring provides temperature data for warning of early action required. (Optional Feature on models with a Programmable Thermostat).

Remote thermostat relay for control by a user-supplied control system.

Stainless Steel Shell for applications in corrosive or other hostile environments.

Special paint finishes.

*Contact KOOLTRONIC for more information.

REPLACEMENT FILTERS

The HTL filter Part No. 7131F (11.5" x 7.13" x 0.34" [292.1mm x 181.1mm x 8.6mm]).

