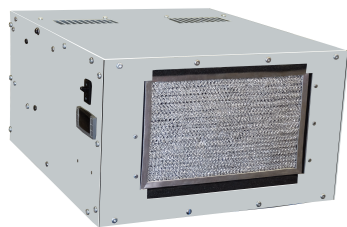


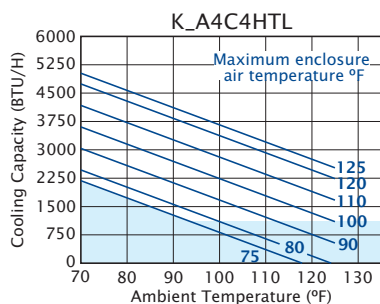
COMPACT SERIES HORIZONTAL AIR-COOLED TOP-MOUNTED AIR CONDITIONERS

w/ s/n M17A4068 and above

TECHNICAL DATA



PERFORMANCE



| Model | UL/CUL Listed or Recognized | 95/95 BTU/H Capacity | 95/95 Rating BTU/H | Ambient Temp. | | Volts | Hz | Running Amps | Fuse Size (Amps) | Approx. Weight | |
|-----------|-----------------------------|----------------------|--------------------|---------------|-------------|---------|-------|--------------|------------------|----------------|-----|
| | | | | °F Max./Min | °C Max./Min | | | | | lbs. | kg. |
| KA4C4HTL | Recognized | 4000 | 3442 | 122/50 | 50/10 | 115/100 | 60/50 | 10.0 | 15 | 85 | 39 |
| K2A4C4HTL | Recognized | 4000 | 2984 | 125/50 | 52/10 | 230/200 | 60/50 | 5.0 | 15 | 85 | 39 |

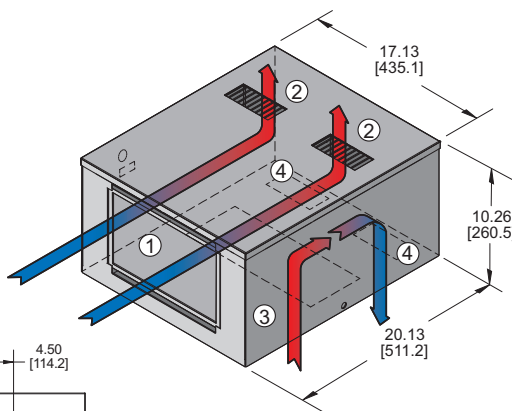
Rating shown is for operation at maximum ambient temperature.

STANDARD FEATURES

Built-in Condensate Evaporator
CFC-Free Refrigerant
Closed-Loop Cooling
Compressor Short Cycle Protector
Filter
Low Ambient Kit
Programmable Temperature Alarm
Programmable Thermostat
UL/CUL Recognized

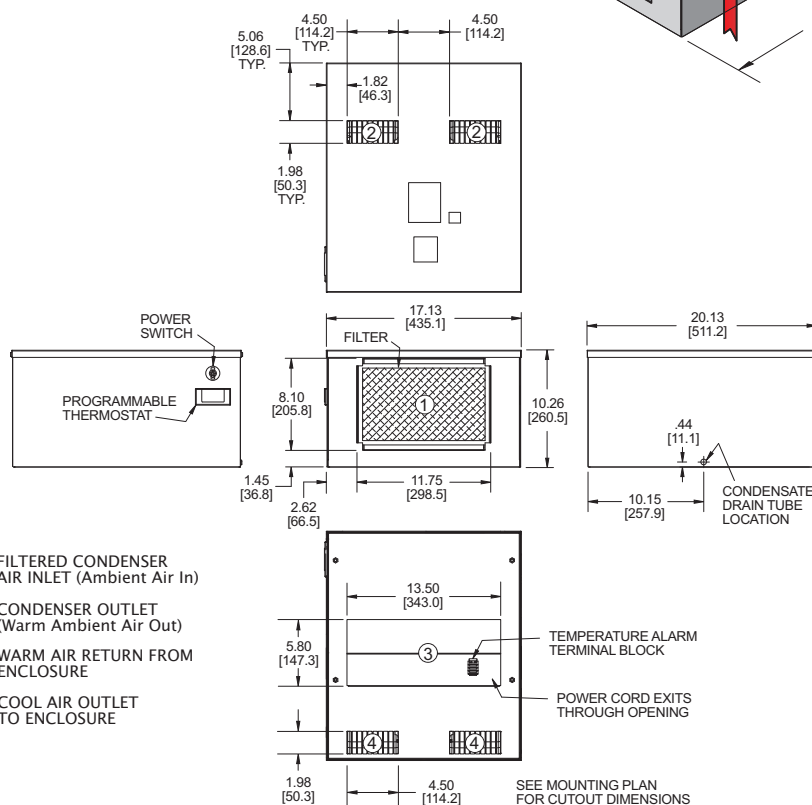
ACCESSORIES AND OPTIONS

Filter Recoating Adhesive
Internal Corrosion Protection
Lifting Eyes
Remote Monitoring
Remote Thermostat Relay
Replacement Filters
Special controls or indicators
Special materials or finishes
Special motors, line cords or connectors
Stainless or Aluminum Shell



Find additional information on this model at kooltronic.com, or use the Technical Documents QR code below.

Technical Documents

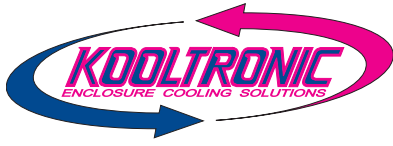


MOUNTING PLAN

Many popular units are available as 3D solid models for customer system integration. Please contact Kooltronic for details.

Dimensions, inches [mm], are for reference only and subject to change.

htcmp.qxd (10/23) (CDR: 20498)



COMPACT SERIES HORIZONTAL AIR-COOLED TOP-MOUNTED AIR CONDITIONERS w/ s/n M17A4068 and above

DESCRIPTION

KOOLTRONIC **Horizontal Top-Mounted Air Conditioners** provide a full range of cooling capacities where space or other limitations prevent panel or internal rack mounting.

The low profile **Compact Series** is recommended for lower to moderate-demand cooling applications in smaller enclosures.

Outdoor or corrosive environments require weather protection and/or special internal and external protective features.

For extreme ambient temperatures and/or severely contaminated environments, the use of **Water-Cooled Air Conditioners** is recommended.

KOOLTRONIC also designs and manufactures a variety of Air Conditioners to meet *unique* specifications. We invite your inquiries about our modification and custom-design capabilities.

FEATURES AND BENEFITS (STANDARD)

All models UL/CUL Recognized.

Built-in condensate evaporator eliminates the need for a drain (normal operation*).

CFC-free refrigerant is used in all H9 Air Conditioners.

Closed-loop cooling provides stable temperature control while excluding dust and humidity from the electrical enclosure.

Compressor short-cycling protection extends compressor life.

Low Ambient Kit maintains sufficient operating pressures when ambient temperatures drop below 50°F [10°C].

Programmable temperature alarm to alert if early action required.

Programmable thermostat capable of remote monitoring and control.

Both evaporator and condenser coils are epoxy coated, prolonging unit life.

* May not be adequate in extremely high humidity with open or leaky enclosure. Overflow condensate drain fitting and hose are included.

FEATURES AND BENEFITS (OPTIONAL)*

Aluminum Shell if light weight and/or compatability with aluminum enclosures is required.

Enclosure heater eliminates damaging condensation, increasing reliability of electrical enclosure components.

Remote monitoring provides temperature data for warning of early action required. (Optional Feature on models with a Programmable Thermostat).

Remote thermostat relay for control by a user-supplied control system.

Stainless Steel Shell for applications in corrosive or other hostile environments.

Special paint finishes.

*Contact KOOLTRONIC for more information.

REPLACEMENT FILTERS

The HTL filter Part No. 7131F (11.5" x 7.13" x 0.34" [292.1mm x 181.1mm x 8.6mm]).

