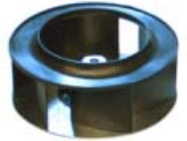


K2BC4E315/101A MOTORIZED IMPELLER

TECHNICAL DATA

Model	CFM@ 0" S.P.	Cutoff S.P.	Volts	Hz	Amps	Watts	Capacitor μF	RPM	dBA	Min. Temp.	Max. Temp.
K2BC4E315/101A	1235	1.43	230	60	0.71	161	4.0	1565	65	-40°F/-40°C	158°F/70°C
K2BC4E315/101A	1085	1.02	230	50	0.58	119	4.0	1375	62	-40°F/-40°C	158°F/70°C



STANDARD FEATURES

1235 CFM Capacity
Available in 230 VAC, 50/60Hz
Class F, thermally protected
Compact size
External rotor design
Low noise level
Normally In-Stock
Precision balanced
Precision ball-bearing motors
UL 94 V-0 plastic impeller
UL Recognized



ACCESSORIES*

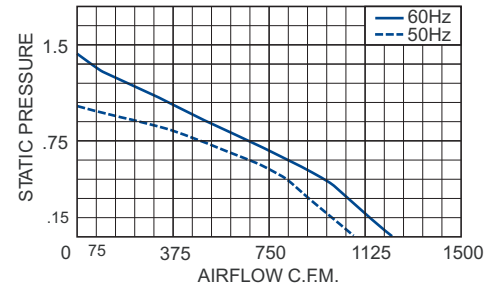
Automatic Speed Control
Capacitor - P/N: 0452-35
Inlet Ring - P/N: 971-395-01AL



***Note:** This unit requires a capacitor for operation. Capacitors are sold separately and shipped loose for field installation by customer. An Inlet Ring is recommended for optimum performance. These are sold separately, to be installed by the customer.

PERFORMANCE

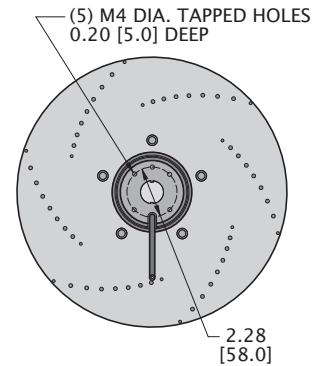
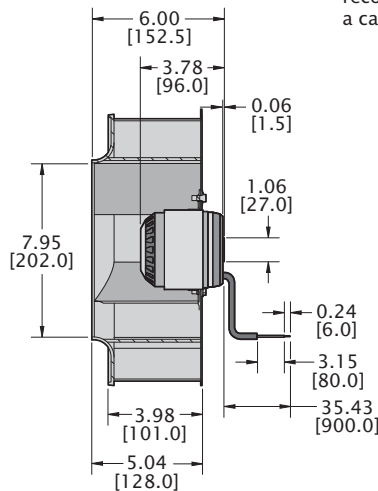
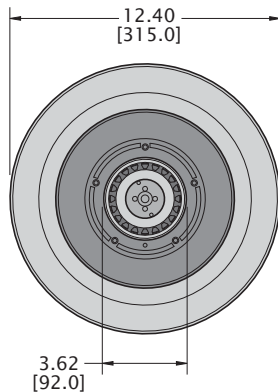
K2BC4E315/101A



Airflow vs. static pressure curves are shown for 60 Hz (solid line) and 50 Hz (broken line) inputs. Static pressure is in inches of water.

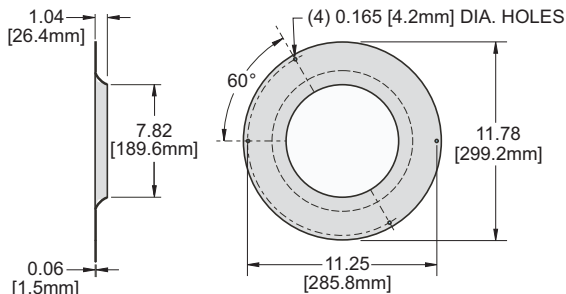
DRAWINGS

Dimensions, inches [mm], are for reference only and are subject to change.



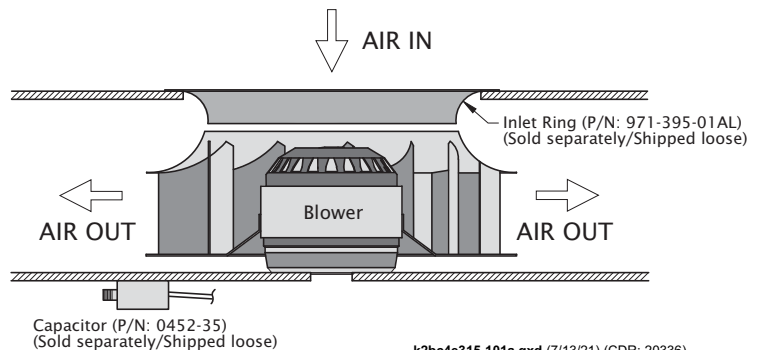
An inlet ring, which must be installed by the customer, is recommended for optimum performance. This unit requires a capacitor which must be connected by the customer.

INLET RING P/N: 971-395-01AL



Dimension, inches [metric], are for reference only and are subject to change.

TYPICAL INSTALLATION



k2bc4e315-101a.qxd (7/13/21) (CDR: 20336)