

# K2BC4R355/127A MOTORIZED IMPELLER

These units are discontinued, and this information is presented for reference purposes only.  
Recommended replacement: See current Motorized Impellers.

## TECHNICAL DATA

Model	CFM@ 0" S.P.	Cutoff S.P.	Volts	Hz	Amps	Watts	Capacitor μF	RPM	dBA	Max. Temp
K2BC4R355/127A	2070	2.1	230	60	2.15	490	8.0	1480	78	113°F/45°C

Available in 230 VAC 60 Hz.



## STANDARD FEATURES

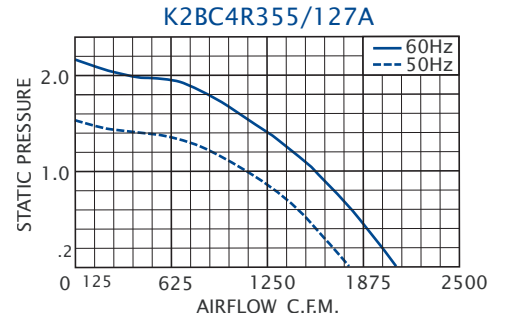
- Low noise level
- 2070 CFM capacity
- Available in 230 VAC, 50/60Hz
- Compact size
- Precision balanced
- External rotor design
- Precision ball-bearing motors
- Normally In-Stock

## ACCESSORIES\*

- Capacitor - P/N: 0452-76
- Inlet Ring - P/N: 1114-12
- Automatic Speed Control



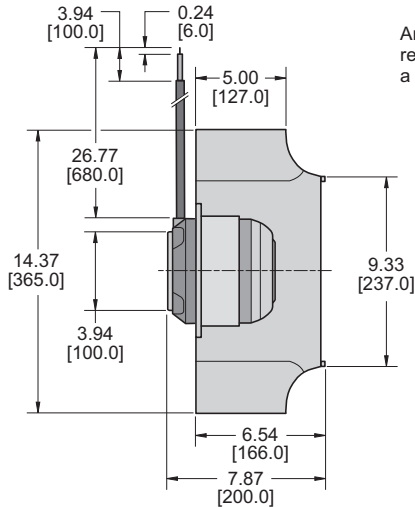
## PERFORMANCE



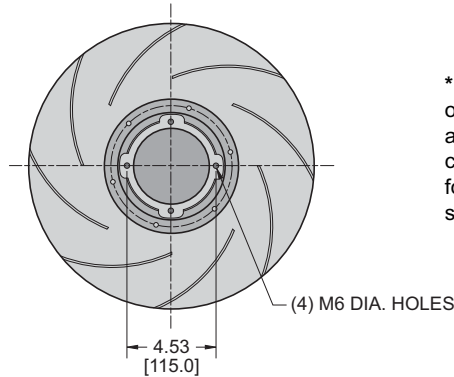
Airflow vs. static pressure curves are shown for 60 Hz and 50 Hz (broken line) inputs. Static pressure is in inches of water.

## DRAWINGS

Dimensions, inches [mm], are for reference only and are subject to change.



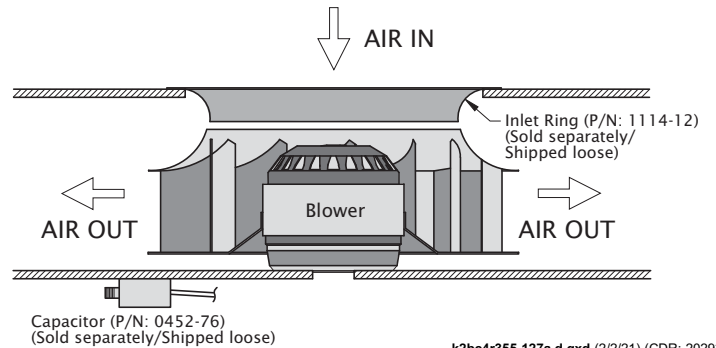
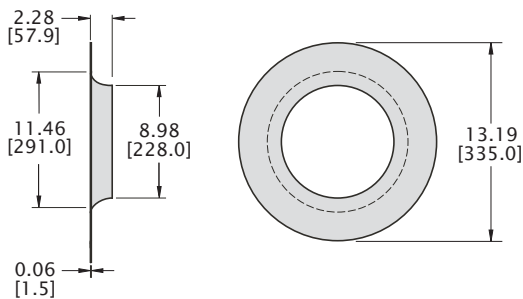
An inlet ring, which must be installed by the customer, is recommended for optimum performance. This unit requires a capacitor which must be connected by the customer.



**\*Note:** This unit requires a capacitor for operation. Capacitors are sold separately and shipped loose for field installation by customer. An Inlet Ring is recommended for optimum performance. These are sold separately, to be installed by the customer.

## TYPICAL INSTALLATION

### OPTIONAL INLET RING P/N: 1114-12



k2bc4r355-127a.d.qxd (2/21) (CDR: 20293)