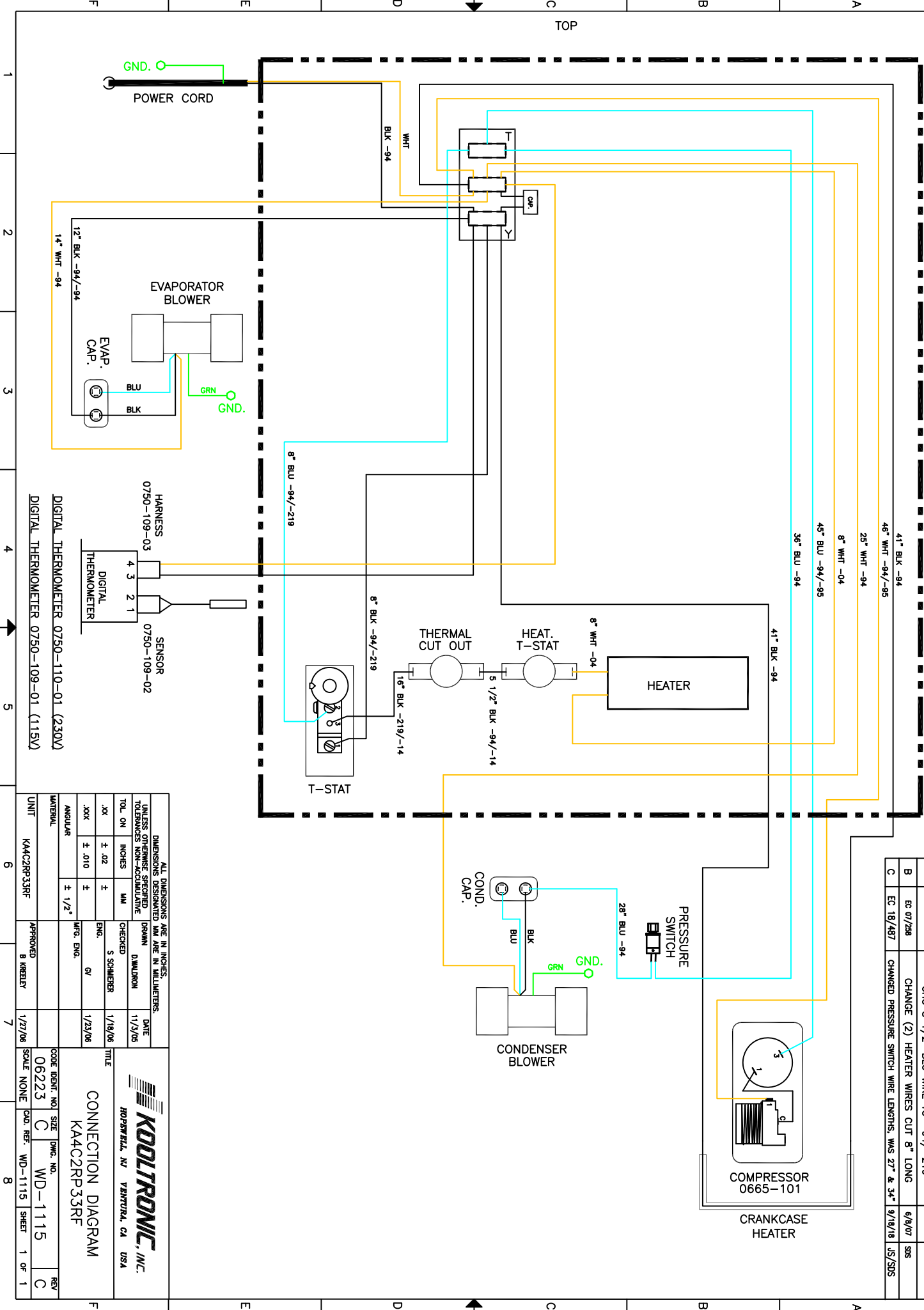


THIS DOCUMENT IS THE PROPERTY OF KOOLTRONIC, INC. AND CONTAINS PROPRIETARY AND CONFIDENTIAL INFORMATION WHICH MUST NOT BE DUPLICATED, USED OR DISCLOSED OTHER THAN AS EXPRESSLY AUTHORIZED BY KOOLTRONIC, INC.



REV	DATE	APPROVED
1	4/19/00	DM
2	2/15/07	SSS
3	6/8/07	SSS
4	9/18/18	JS/SOS

REV	DATE	DESCRIPTION
1	4/19/00	NEW DRAWING RELEASE.
2	2/15/07	CHG 8\" BLK WIRE TO -94/-219
3	6/8/07	CHG 8 1/2\" BLU WIRE TO -94/-219
4	9/18/18	CHANGED PRESSURE SWITCH WIRE LENGTHS, WAS 27\" & 34\"

ALL DIMENSIONS ARE IN INCHES, UNLESS OTHERWISE SPECIFIED. DIMENSIONS DESIGNATED MM ARE IN MILLIMETERS. TOLERANCES NON-ACCUMULATIVE.

TOL. ON	INCHES	MM	CHECKED	DATE
.XX	± .02	±	S SCHMIERER	1/18/06
.XXX	± .010	±	ENG. QV	1/23/06
ANGULAR	± 1/2°			

KOOLTRONIC, INC.
 802 W. BELLEVILLE, NJ 07003
 VENTURA, CA USA

CONNECTION DIAGRAM
 KA4C2RP33RF

UNIT	KA4C2RP33RF	APPROVED	B KIBBELY	1/27/06					
SCALE	NONE	CODE IDENT. NO.	06223	SIZE	C	DWG. NO.	WD-1115	REV	C
		CAD. REF.	WD-1115	SHEET	1	OF	1		