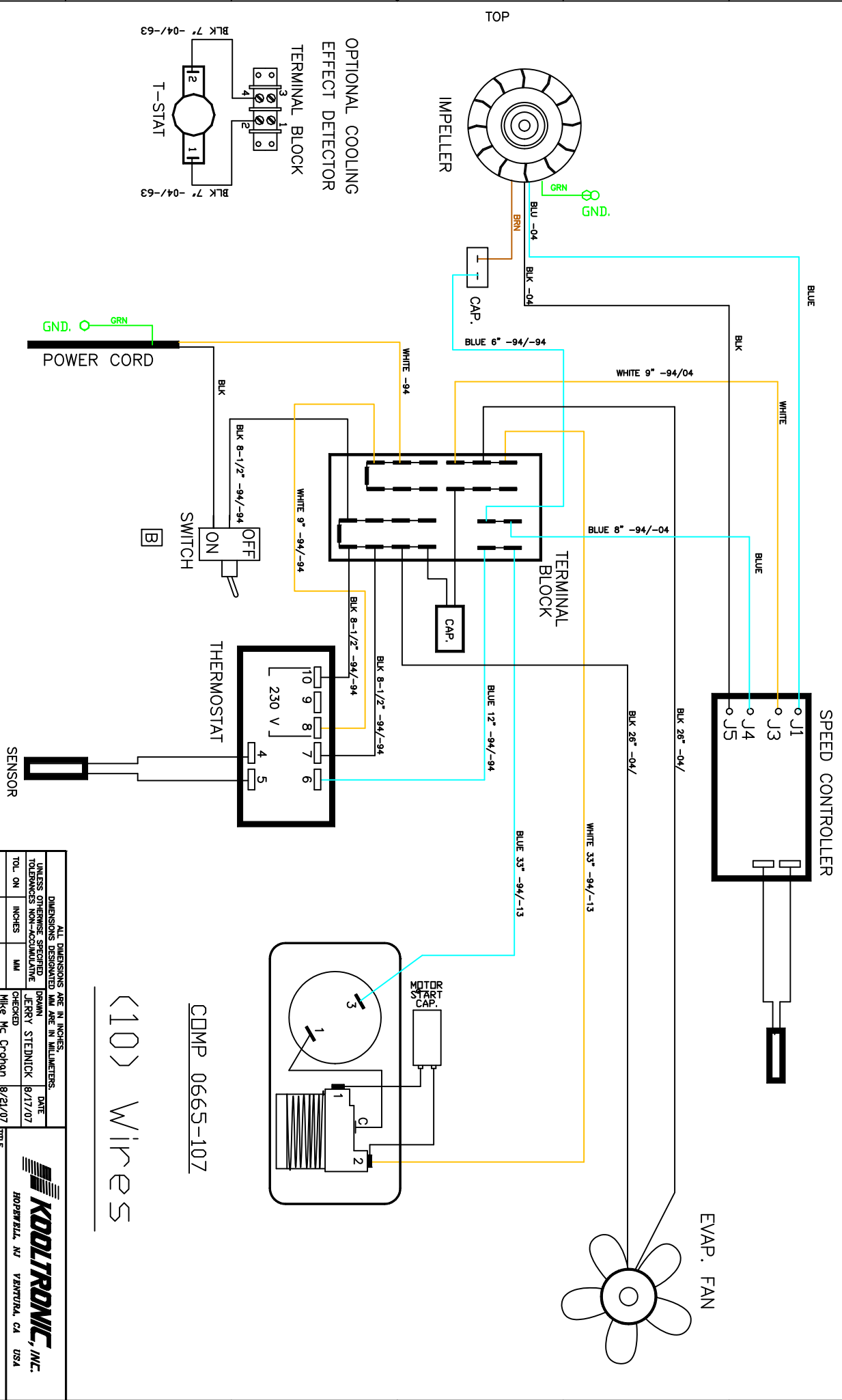


THIS DOCUMENT IS THE PROPERTY OF KOOLTRONIC, INC. AND CONTAINS PROPRIETARY AND CONFIDENTIAL INFORMATION WHICH MUST NOT BE DUPLICATED, USED OR DISCLOSED OTHER THAN AS EXPRESSLY AUTHORIZED BY KOOLTRONIC, INC.

SYM	NOTICE	DESCRIPTION	DATE	APPROVED
-	ER 07/071	NEW DRAWING RELEASE	7/17/07	JS
A	EC 08/229	ADDED BLK 26" -04/ EVAP FAN WIRES	3/26/08	RM
B	EC 08/717	ADDED ON/OFF DIRECTION TO SWITCH	9/16/08	RM DW-
C	ER 11/032	ADDED OPTIONAL COOLING EFFECT DETECTOR.	4/29/11	DW-



COMP 0665-107
 (10) Wires

DIMENSIONS ARE IN INCHES. UNLESS OTHERWISE SPECIFIED DIMENSIONS ARE IN MILLIMETERS.		DRAWN DATE	
TOL. ON INCHES	MM	JERRY STEINICK	8/17/07
XX ± .02		MIKE Mc Crohan	8/21/07
XXX ± .010		JWD	9/22/07
ANGULAR	± 1/2°	MRG. ENG.	
MATERIAL			
UNIT	K2NA4C3P21L	APPROVED	B/24/07
		B KREELEY	
CODE IDENT. NO.	06223	DWG. NO.	WD-1208
SCALE	NONE	SHEET	1 OF 1

KOOLTRONIC, INC.
 HOPWELL, NJ VENTURA, CA USA

WIRING DIAGRAM
 AIR CONDITIONER

Grid lines and dimensions: 1, 2, 3, 4, 5, 6, 7, 8 (horizontal); A, B, C, D, E, F (vertical).