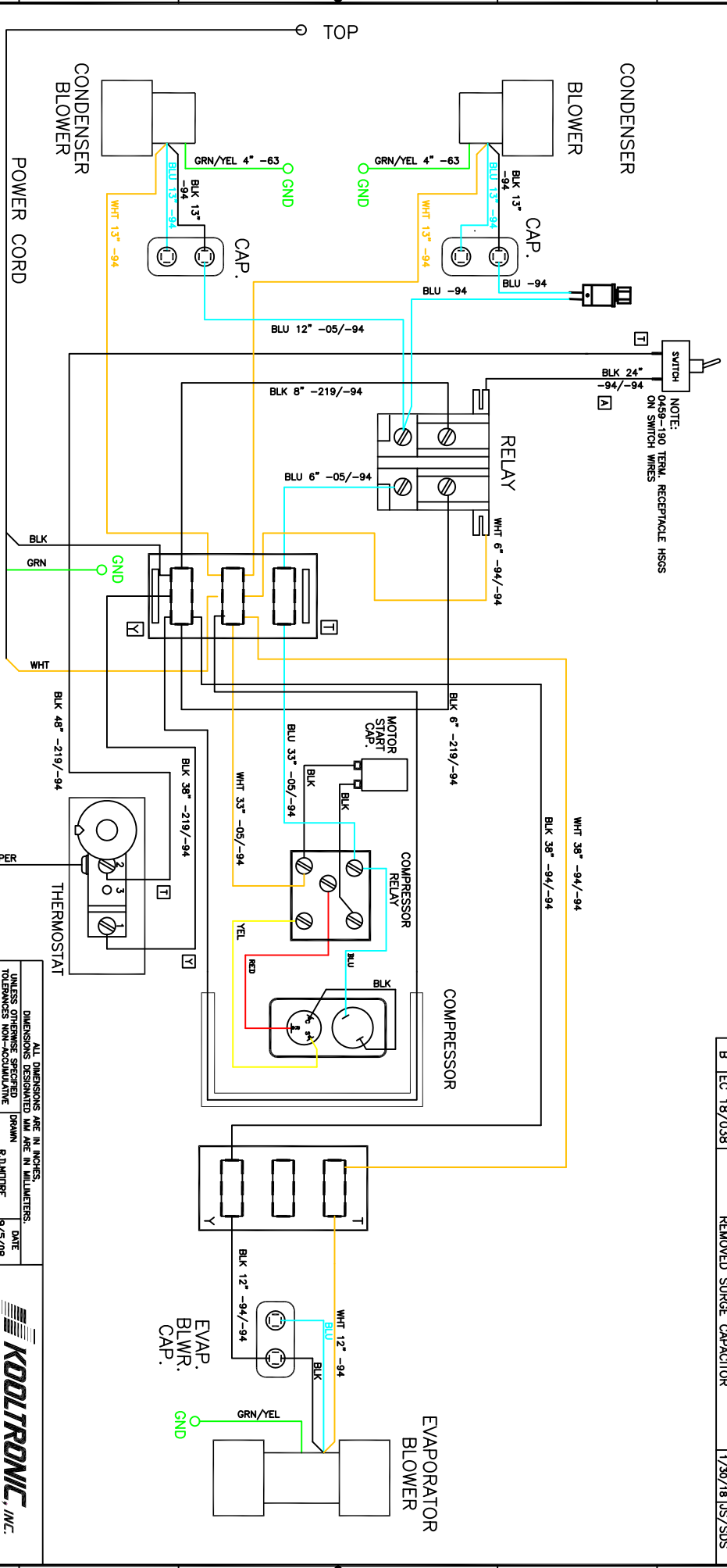


THIS DOCUMENT IS THE PROPERTY OF KOOLTRONIC, INC. AND CONTAINS PROPRIETARY AND CONFIDENTIAL INFORMATION WHICH MUST NOT BE DUPLICATED, USED OR DISCLOSED TO OTHERS, EXCEPT AS EXPRESSLY AUTHORIZED IN WRITING BY KOOLTRONIC, INC.



REVISIONS				
SYM	NOTICE	DESCRIPTION	DATE	APPROVED
-	ER 08/071	NEW DRAWING RELEASE	9/5/08	RDM/JS
A	EC 10/662	REPLACE WIRE.	12/22/10	DW-
B	EC 18/038	REMOVED SURGE CAPACITOR	1/30/18	JS/SDS

ALL DIMENSIONS ARE IN INCHES. DIMENSIONS DESIGNATED MM ARE IN MILLIMETERS.

TOLERANCES UNLESS SPECIFIED	DRAWN	DATE
TOL. ON INCHES	R.D.MOORE	9/5/08
TOL. ON MILLIMETERS		

CHECKED	JERRY STEDNICK	9/11/08
ENG.	Jin Dieler	9/19/08
MFG. ENG.		

KOOLTRONIC, INC.
 809P/WBLA, NJ VERMONTA, CA USA

WIRING DIAGRAM
 AIR CONDITIONER
 KNA4C4-7P38L

CODE IDENT. NO.	SIZE	DWG. NO.	REV
06223	B	WD-1259	B
CAD. REF.	WD-1259	SHEET	1 OF 1

APPROVED: Bruce Kreyer 9/19/08

SEE TITLE BLOCK