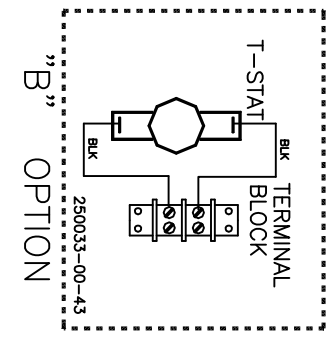
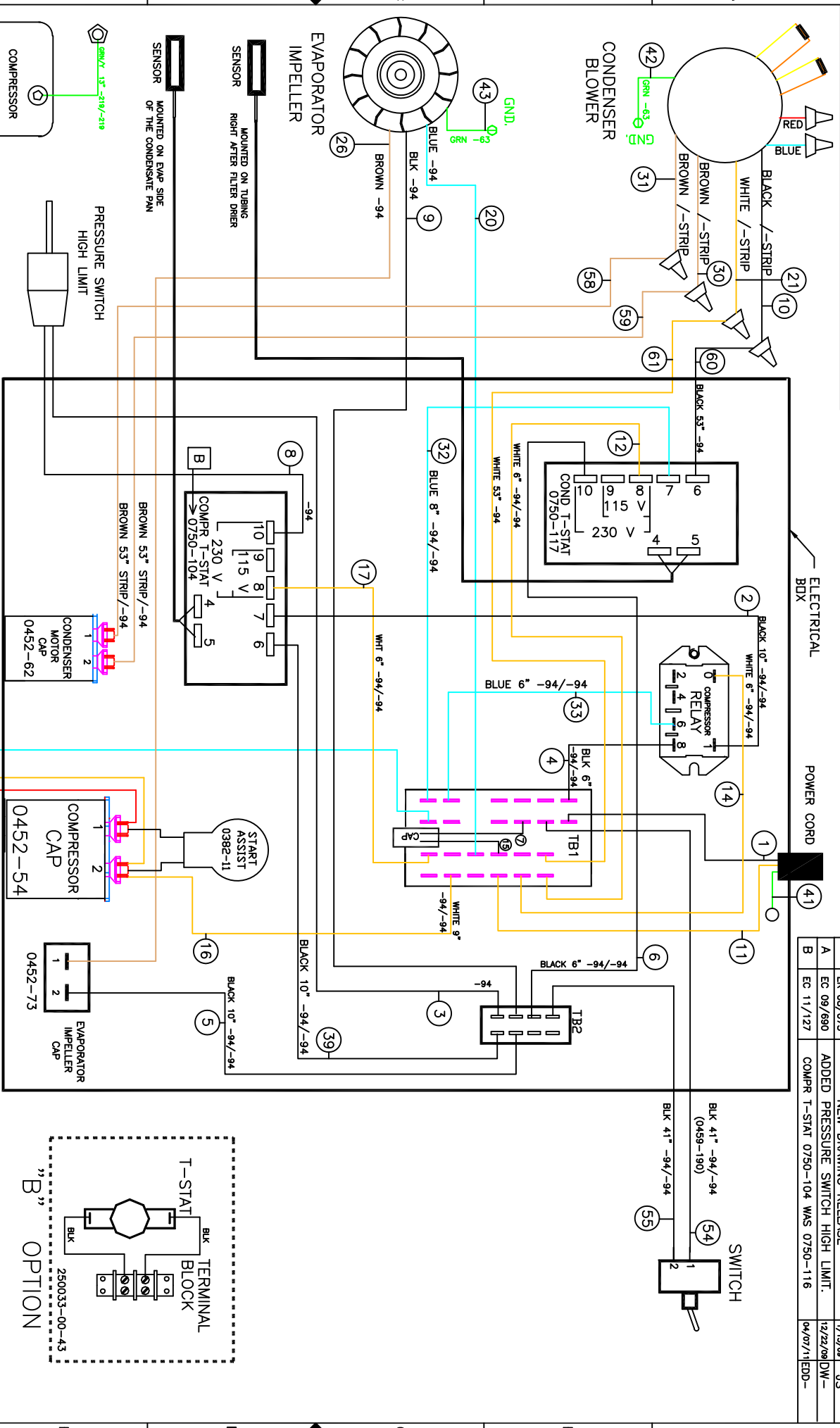


THIS DOCUMENT IS THE PROPERTY OF KOOLTRONIC, INC. AND CONTAINS PROPRIETARY AND CONFIDENTIAL INFORMATION WHICH MUST NOT BE DUPLICATED, USED OR DISCLOSED OTHER THAN AS EXPRESSLY AUTHORIZED BY KOOLTRONIC, INC.

EC 13/114 ADDED GROUND WIRE TO COMPRESSOR 4/19/13 JS

REV	NOTICE	DESCRIPTION	DATE	APPROVED
-	ER 08/075	NEW DRAWING RELEASE	1/13/08	JS
A	EC 09/890	ADDED PRESSURE SWITCH HIGH LIMIT.	12/22/08	DW-
B	EC 11/127	COMPR T-STAT 0750-104 WAS 0750-116	04/07/11	EDD-



ALL DIMENSIONS ARE IN INCHES. DIMENSIONS DESIGNATED MM ARE IN MILLIMETERS. UNLESS OTHERWISE SPECIFIED TOLERANCES NON-ACCUMULATIVE

TOL. ON	INCHES	MM	DATE
.XX	± .02	±	12/4/08
.XXX	± .010	±	1/17/09
ANGULAR	± 1/2°		1/15/09

APPROVED: Joe M/Bruce K 7/30/08

UNITEC K2NA6C14DPP50L

CODE IDENT. NO. 06223
 SIZE C
 DWG. NO. WD-1269
 CAD. REF. WD-1269
 SCALE NONE

REV C

SHEET 1 OF 1

DATE 1/13/08
 APPROVED JS
 DATE 12/22/08
 APPROVED DW-
 DATE 04/07/11
 APPROVED EDD-

KOOLTRONIC, INC.
 HOPKINSON, NJ 07033
 VENTURA, CA 94082

WIRING DIAGRAM