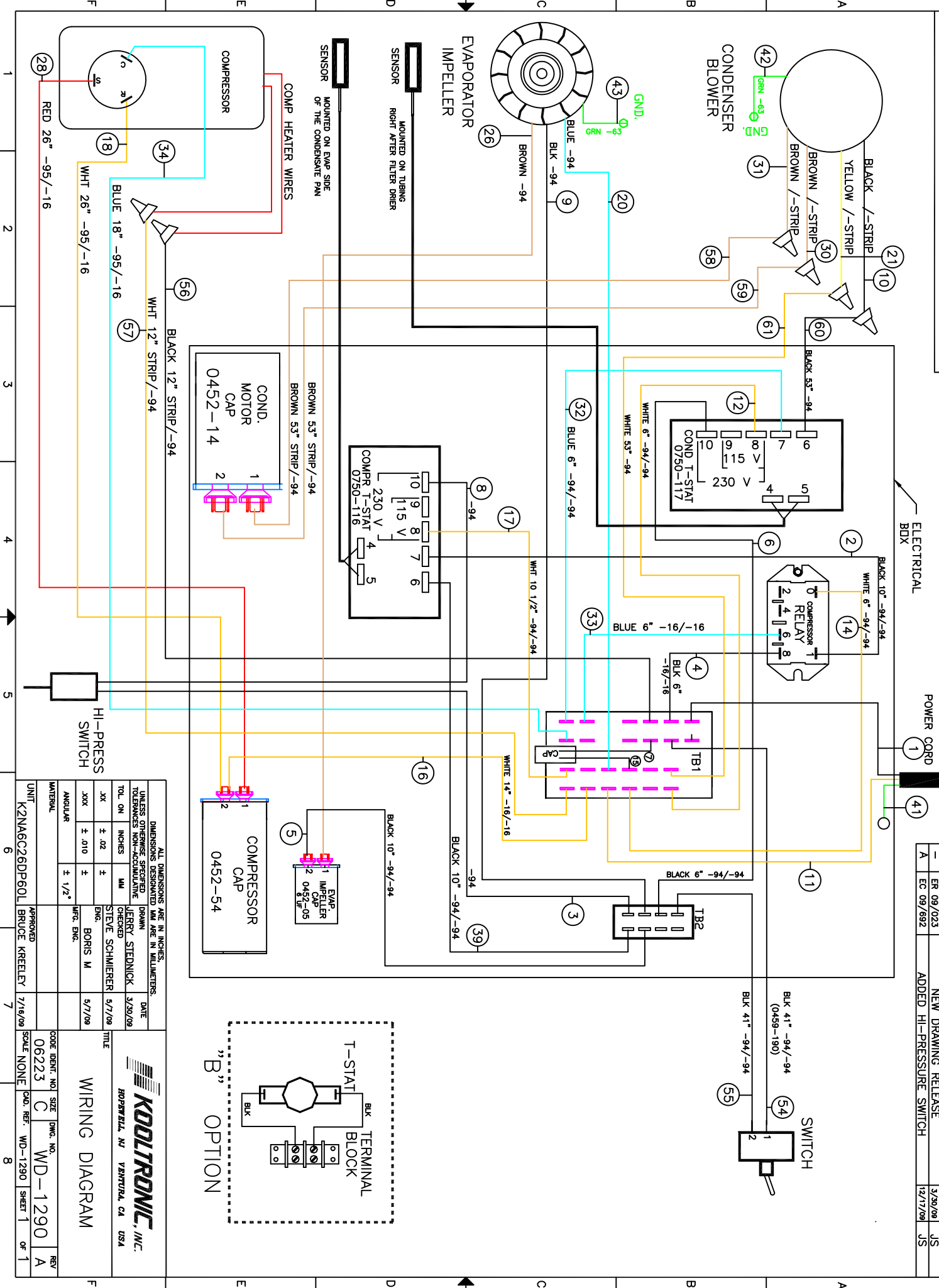
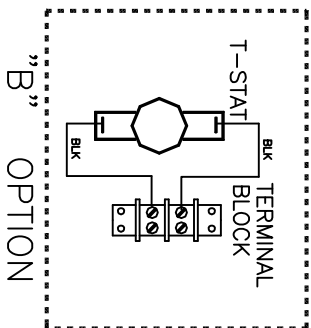


THIS DOCUMENT IS THE PROPERTY OF KOOLTRONIC, INC. AND CONTAINS PROPRIETARY AND CONFIDENTIAL INFORMATION WHICH MUST NOT BE DUPLICATED, USED OR DISCLOSED OTHER THAN AS EXPRESSLY AUTHORIZED BY KOOLTRONIC, INC.



REVISIONS		DATE	APPROVED
SWM	NOTICE	5/20/08	JS
ER	09/023	5/20/08	JS
NEW DRAWING	RELEASE		
EC	09/692	12/17/09	JS
ADDED HI-PRESSURE	SWITCH		



DIMENSIONS ARE IN INCHES, UNLESS OTHERWISE SPECIFIED				DIMENSIONS DESIGNATED MM ARE IN MILLIMETERS, UNLESS OTHERWISE SPECIFIED			
TOL. ON INCHES	MM	DATE	DRWING	TOL. ON INCHES	MM	DATE	DRWING
XX ± .02	±	5/7/08	JERRY STEDNICK	XX ± .02	±	5/7/08	STEVE SCHMIERER
XXX ± .010	±	5/7/08	CHECKED	XXX ± .010	±	5/7/08	ENG. BORIS M
ANGULAR ± 1/2°	±		APPROVED	ANGULAR ± 1/2°	±		APPROVED
			BRUCE KRETELLEY				7/18/08

UNIT	DESCRIPTION	DATE	APPROVED
K2NA6C26DP60L	NEW DRAWING RELEASE	5/20/08	JS
	ADDED HI-PRESSURE SWITCH	12/17/09	JS

CODE IDENT. NO.	SIZE	DWG. NO.	REV
06223	C	WD-1290	A
SCALE	NONE	CAD. REF.	WD-1290
		SHEET	1 OF 1

KOOLTRONIC, INC.
 HOPWELL, NJ VENTURA, CA USA

WIRING DIAGRAM