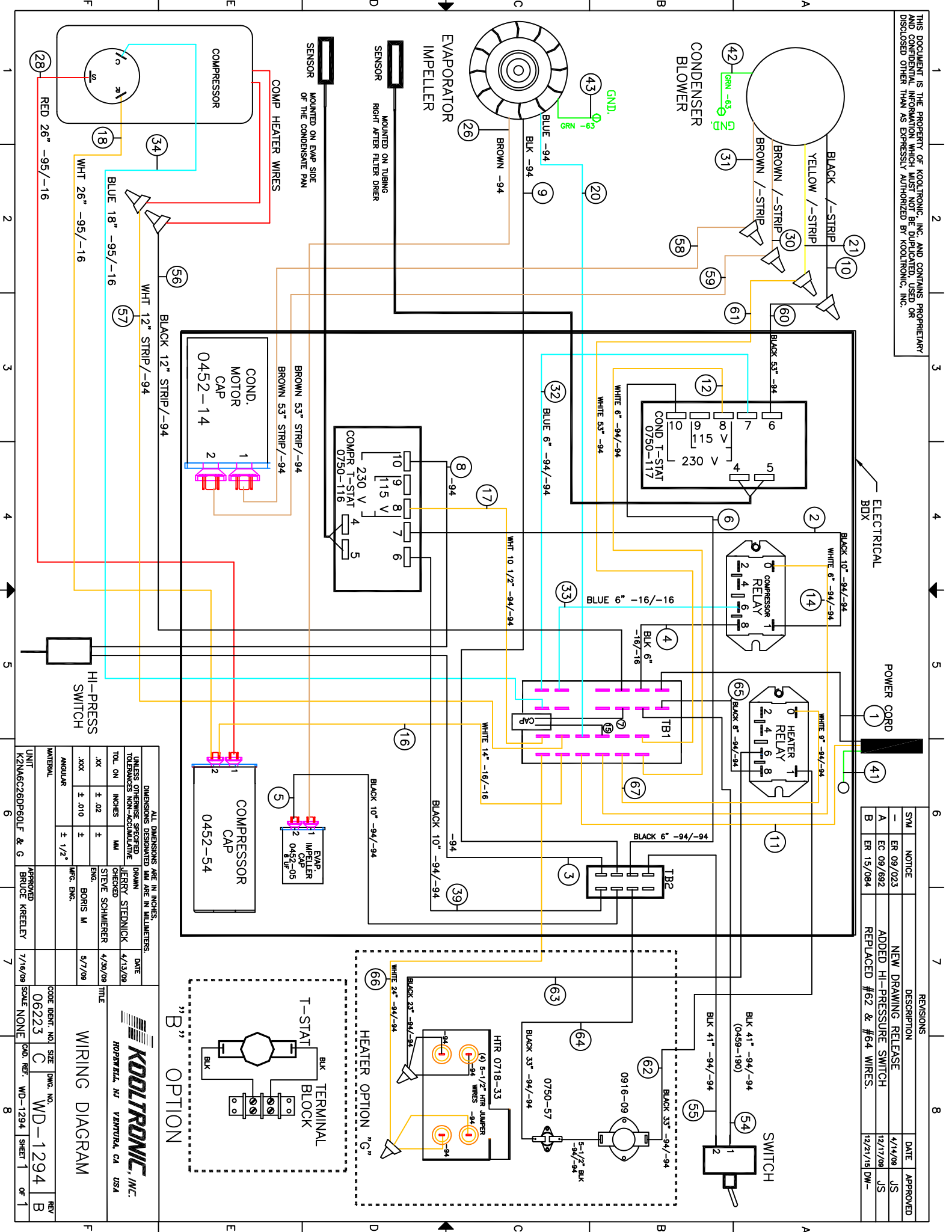
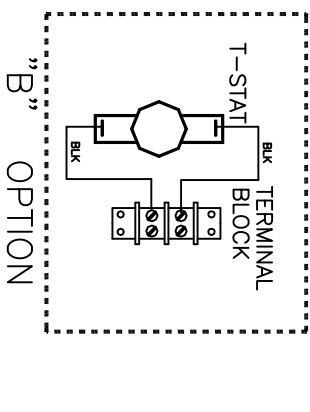


THIS DOCUMENT IS THE PROPERTY OF KOOLTRONIC, INC. AND CONTAINS PROPRIETARY AND CONFIDENTIAL INFORMATION WHICH MUST NOT BE DUPLICATED, USED OR DISCLOSED OTHER THAN AS EXPRESSLY AUTHORIZED BY KOOLTRONIC, INC.



REV	DESCRIPTION	DATE	APPROVED
7	NEW DRAWING RELEASE	4/14/08	JS
6	ADDED HI-PRESSURE SWITCH	12/17/08	JS
5	REPLACED #62 & #64 WIRES.	12/21/18	DW-
4			
3			
2			
1			



DIMENSIONS ARE IN INCHES, UNLESS OTHERWISE SPECIFIED		DIMENSIONS DESIGNATED MM ARE IN MILLIMETERS.	
TOL. ON INCHES	TOLERANCES NON-ACCUMULATIVE	DRWN	DATE
XX ± .02	±	JERRY STEDNICK	4/13/08
XXX ± .010	±	STEVE SCHMIERER	4/30/08
ANGULAR ± 1/2°	±	BORIS M	5/7/08
APPROVED	BRUCE KRELELY	1/18/08	SCALE NONE
UNIT	K2NAC26DP60LF & G		

WIRING DIAGRAM

CODE IDENT. NO. SIZE DWG. NO. REV

06223 C WD-1294 B

CAD. REF. WD-1294 SHEET 1 OF 1