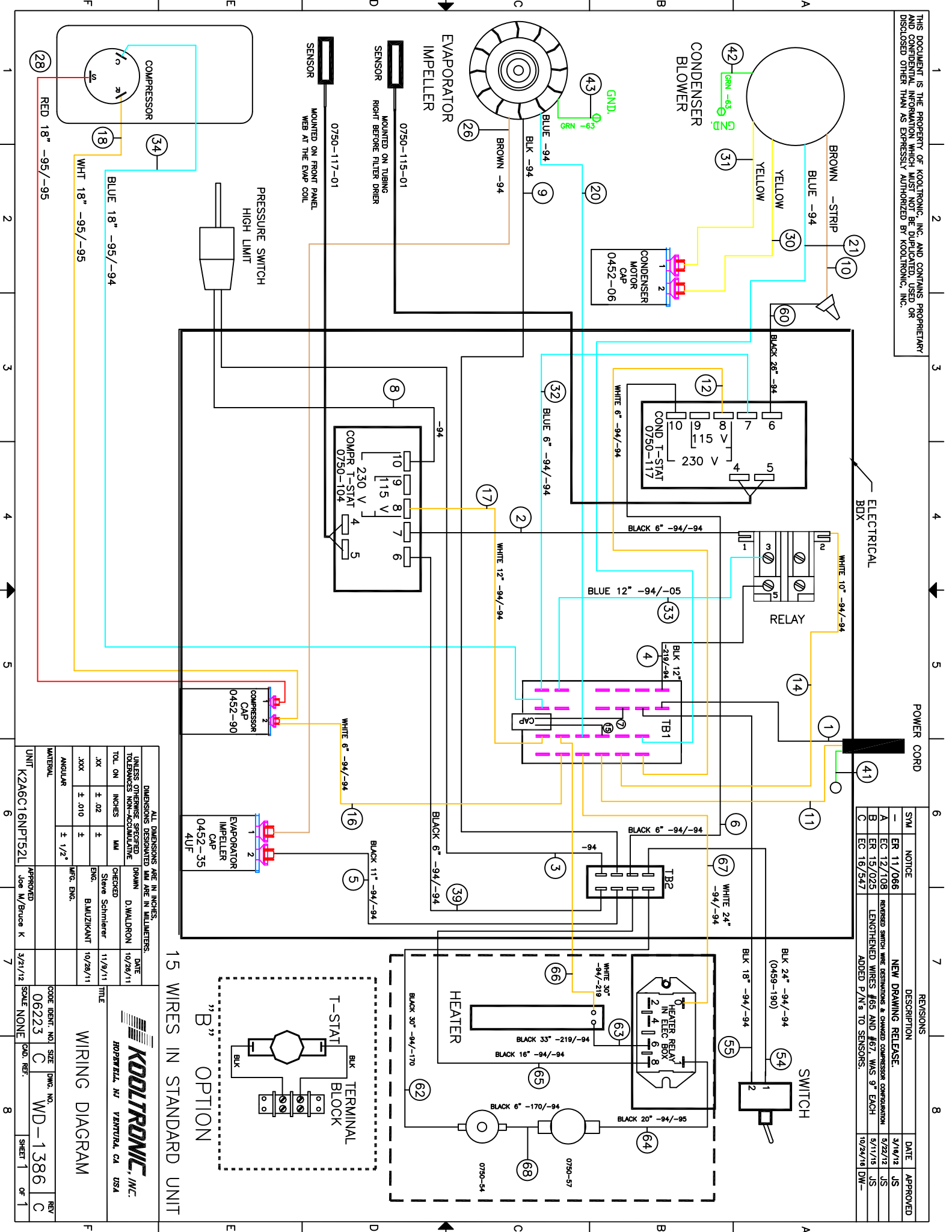


THIS DOCUMENT IS THE PROPERTY OF KOOLTRONIC, INC. AND CONTAINS PROPRIETARY AND CONFIDENTIAL INFORMATION WHICH MUST NOT BE DUPLICATED, USED OR DISCLOSED OTHER THAN AS EXPRESSLY AUTHORIZED BY KOOLTRONIC, INC.



REV	DATE	APPROVED	DESCRIPTION
1	3/16/12	JS	NEW DRAWING RELEASE.
2	5/22/12	JS	REVISION SWITCH WIRE DISPOSITIONS & CHANGED COMPRESSOR CONFIGURATION
3	5/11/15	JS	LENGTHENED WIRES #65 AND #67 WAS 9" EACH
4	10/24/18	DW	ADDED P/W's TO SENSORS.

15 WIRES IN STANDARD UNIT



WIRING DIAGRAM

DIMENSIONS ARE IN INCHES, UNLESS OTHERWISE SPECIFIED		DIMENSIONS DESIGNATED MM ARE IN MILLIMETERS, UNLESS OTHERWISE SPECIFIED	
TOL. ON INCHES	MM	TOL. ON INCHES	MM
.XX ± .02	±	.XX ± .02	±
.XXX ± .010	±	.XXX ± .010	±
ANGULAR ± 1/2°		ANGULAR ± 1/2°	

DATE	11/9/11	CHECKED	Steve Schmitter	DRAWN	D.WALDRON
DATE	10/28/11	ENG.	BAJUZIKANT	DATE	10/28/11
DATE	10/28/11	MFG. ENG.		DATE	10/28/11

CODE IDENT. NO.	SIZE	DWG. NO.	REV
06223	C	WD-1386	C
CAD. REF.	SCALE	NONE	SHEET 1 OF 1