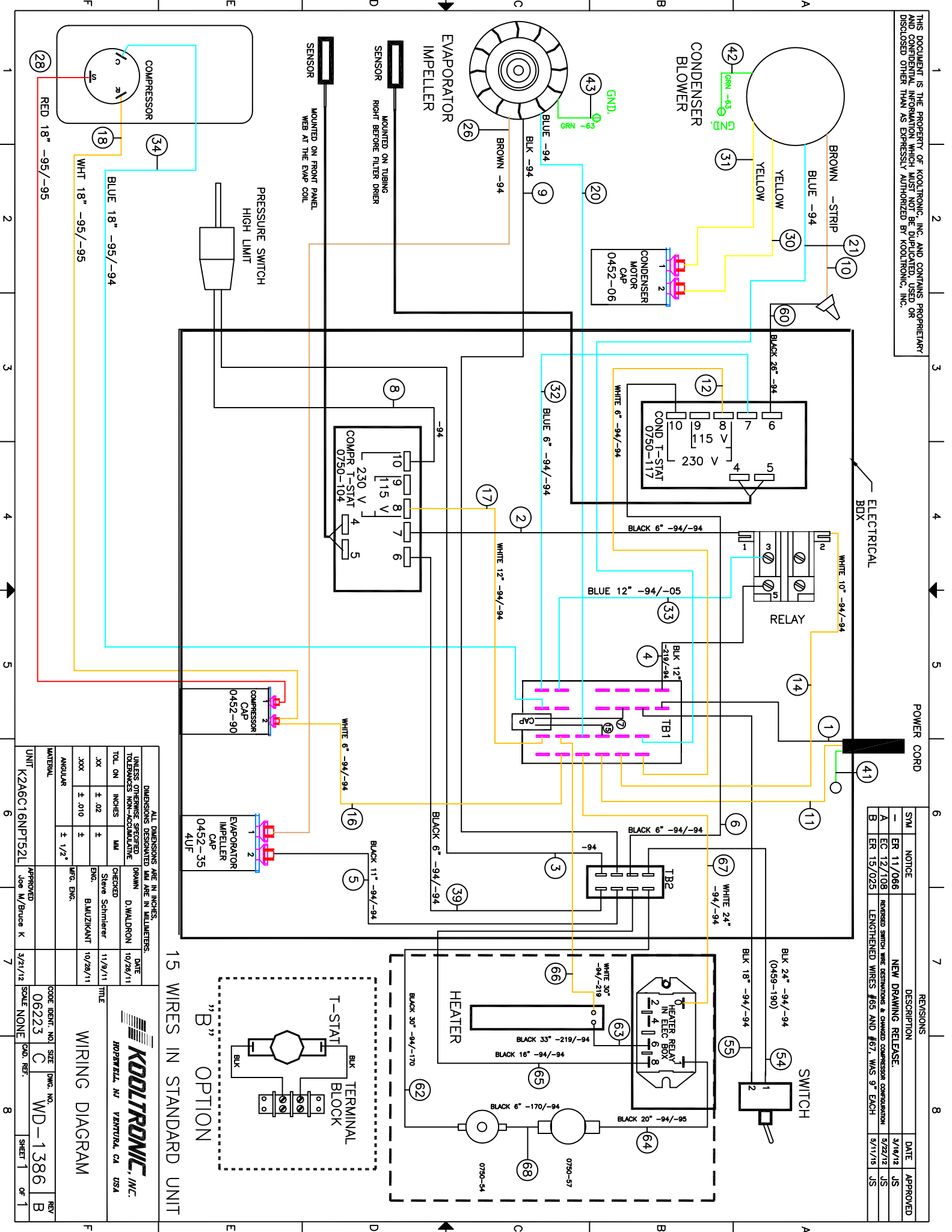
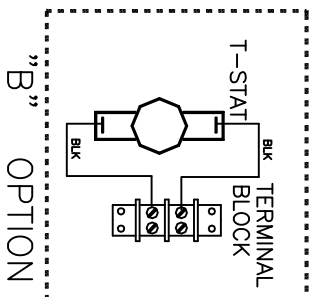


THIS DOCUMENT IS THE PROPERTY OF KOOLTRONIC, INC. AND CONTAINS PROPRIETARY AND CONFIDENTIAL INFORMATION WHICH MUST NOT BE DUPLICATED, USED OR DISCLOSED OTHER THAN AS EXPRESSLY AUTHORIZED BY KOOLTRONIC, INC.



15 WIRES IN STANDARD UNIT



POWER CORD

REV	DATE	APPROVED	DESCRIPTION	NOTICE	SWM
3	3/16/12	J/S	NEW DRAWING RELEASE.	ER 11/066	-
2	5/22/12	J/S	REVERSE SWITCH WIRE DESIGNATIONS & CHANGED COMPRESSOR CONNECTION	EC 12/108	A
1	5/11/15	J/S	LENGTHENED WIRES #65 AND #67, WAS 9" EACH	ER 15/025	B

DIMENSIONS ARE IN INCHES, UNLESS OTHERWISE SPECIFIED		DIMENSIONS DESIGNATED MM ARE IN MILLIMETERS, UNLESS OTHERWISE SPECIFIED	
TOL. ON INCHES	± .02	TOL. ON MM	± .10
XX	± .010	XX	± .12
ANGULAR	± 1/2°	ANGULAR	± 1/2°

UNIT	APPROVED	DATE	SCALE	SHEET	OF
K2A6C16NPT52L	Joe W/Bruce K	3/21/12	NONE	1	1

CODE IDENT.	NO. SIZE	DWG. NO.	REV
06223	C	WD-1386	B

TITLE		DATE	
WIRING DIAGRAM		11/9/11	10/28/11

DRAWN		CHECKED	
D. WALDRON	10/28/11	Steve Schmitter	10/28/11

MATERIAL		MFG. ENG.	
BAJUZIKANT		MFG. ENG.	

Kooltronic, Inc.	
ROPERBEL, NJ VERMONTA, CA USA	