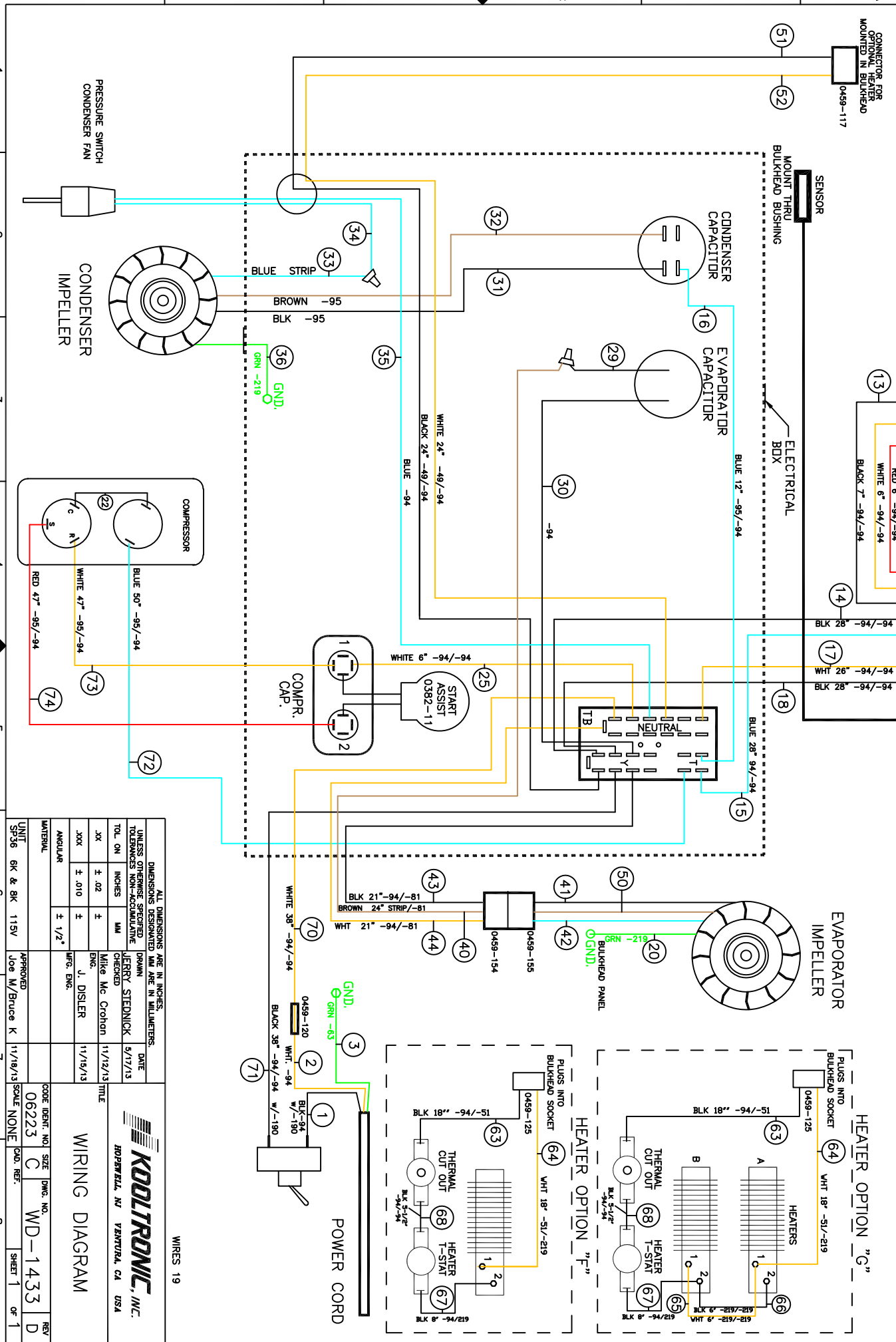


THIS DOCUMENT IS THE PROPERTY OF KOOLTRONIC, INC. AND CONTAINS PROPRIETARY AND CONFIDENTIAL INFORMATION WHICH MUST NOT BE DUPLICATED, USED OR DISCLOSED OTHER THAN AS EXPRESSLY AUTHORIZED BY KOOLTRONIC, INC.

NOTE: #2, #4 & #7 T-STAT TERMINALS GET 0459-190 TERM. HOUSING COVERS

REV	NOTICE	DESCRIPTION	DATE	APPROVED
-	ER 13/043	NEW DRAWING RELEASE	10/29/13	JS
A	EC 14/050	CHANGED WIRE #20 TERMINAL, WAS -63	6/12/14	JS
B	ER 15/058	ADDED HEATER OPTION "F"	6/4/15	DW-SDS
C	EC 18/204	WIRE #64 LENGTH WAS 12"	4/2/18	DW-SDS
D	EC 20/091	WIRE #30 TO NEW LOCATION AWAY FROM END OF TERMINAL BLOCK.	2/24/20	SF/SDS



WIRES 19



WIRING DIAGRAM

DIMENSIONS ARE IN INCHES, DIMENSIONS DESIGNATED MM ARE IN MILLIMETERS, UNLESS OTHERWISE SPECIFIED		DATE	APPROVED
TOL. ON INCHES	MM	9/17/13	Joe M/Bruce K
XX ± .02	±	11/12/13	
XXX ± .010	±	11/15/13	
ANGULAR	± 1/2°		

UNIT	SIZE	DWG. NO.	REV
SP36	6K & 8K	115V	WD-1433
			D

CODE IDENT.	NO.	SIZE	DWG. NO.	REV
06223	C	WD-1433	D	