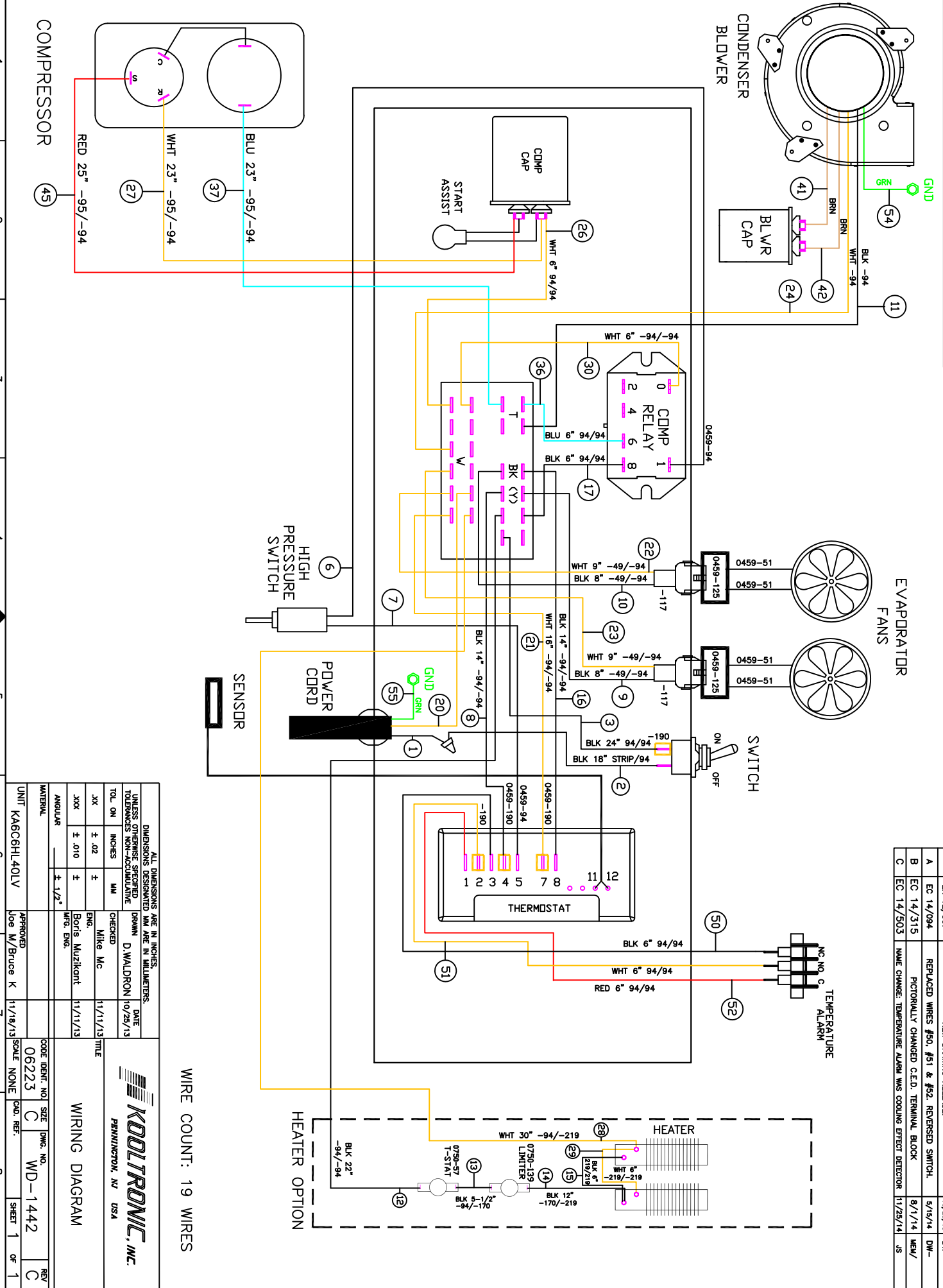


THIS DOCUMENT IS THE PROPERTY OF KOOLTRONIC, INC. AND CONTAINS PROPRIETARY AND CONFIDENTIAL INFORMATION WHICH MUST NOT BE DUPLICATED, USED OR DISCLOSED OTHER THAN AS EXPRESSLY AUTHORIZED BY KOOLTRONIC, INC.



WIRE COUNT: 19 WIRES

| REVISIONS | | DATE | APPROVED |
|-----------|------------|----------|----------|
| SWM | NOTICE | | |
| - | ER 12/06/7 | 10/26/13 | DW- |
| A | EC 14/09/4 | 5/14/14 | DW- |
| B | EC 14/31/5 | 8/1/14 | NEM/ |
| C | EC 14/50/3 | 11/29/14 | JS |

| | | |
|---|------------------------|--|
| <p>ALL DIMENSIONS ARE IN INCHES, DIMENSIONS DESIGNATED MM ARE IN MILLIMETERS, UNLESS OTHERWISE SPECIFIED</p> <p>TOLERANCES NON-ACCUMULATIVE</p> | | <p>DRAWN D. WALDRON</p> <p>DATE 10/26/13</p> |
| TOL. ON INCHES | MM | CHECKED |
| .XX ± .02 | ± | Mike Mc |
| .XXX ± .010 | ± | Boris Muzikent |
| ANGULAR | ± 1/2° | WFO. ENG. |
| UNIT KA6C6HL40LV | APPROVED Joe W/Bruce K | DATE 11/19/13 |
| SCALE NONE | CODE IDENT. NO. 06223 | SIZE C |
| | DWG. NO. WD-1442 | REV C |
| | CAD. REF. | SHEET 1 OF 1 |



WIRING DIAGRAM