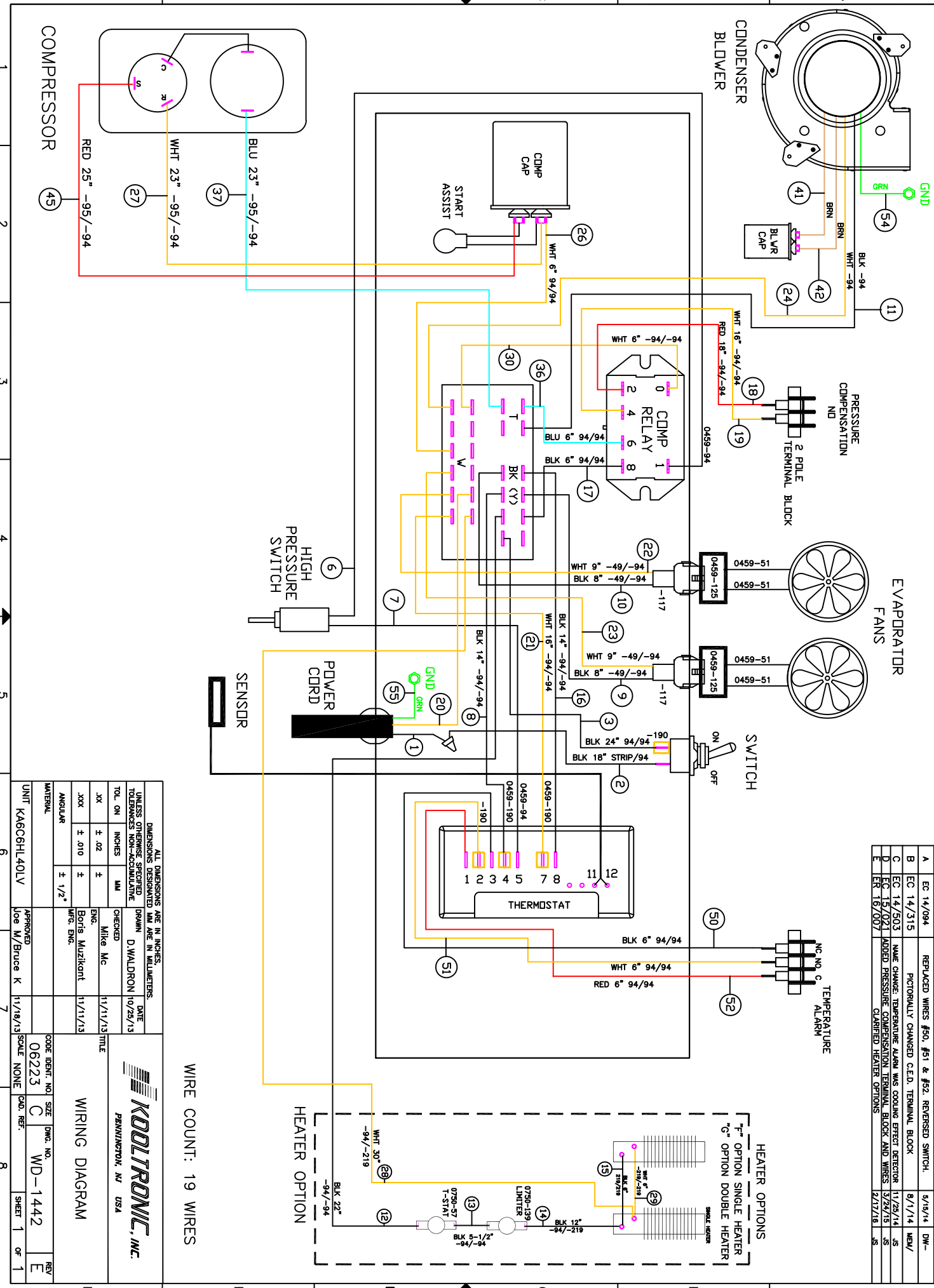


THIS DOCUMENT IS THE PROPERTY OF KOOLTRONIC, INC. AND CONTAINS PROPRIETARY AND CONFIDENTIAL INFORMATION WHICH MUST NOT BE DUPLICATED, USED OR DISCLOSED OTHER THAN AS EXPRESSLY AUTHORIZED BY KOOLTRONIC, INC.



WIRE COUNT: 19 WIRES

REV	DATE	APPROVED	DESCRIPTION	REVISIONS
-	10/28/13	DW-	NEW DRAWING RELEASE	SWM NOTICE
A	5/14/14	DW-	REPLACED WIRES #50, #51 & #52. REVERSED SWITCH.	ER 12/06/7
B	8/1/14	NEW/	PICTORIALLY CHANGED C.E.D. TERMINAL BLOCK	EC 14/3/15
C	11/29/14	NEW/	NAME CHANGE: TEMPERATURE ALARM WAS COOLING EFFECT DETECTOR	EC 14/5/03
D	3/24/15	US	ADDED PRESSURE COMPENSATION TERMINAL BLOCK AND WIRES	EC 15/02/1
E	2/17/16	US	CARRIED HEATER OPTIONS	ER 16/00/7

ALL DIMENSIONS ARE IN INCHES. DIMENSIONS DESIGNATED MM ARE IN MILLIMETERS. UNLESS OTHERWISE SPECIFIED TOLERANCES NON-ACCUMULATIVE		DRAWN D. WALDRON	DATE 10/28/13
TOL. ON	INCHES	CHECKED	
XX	± .02	Mike Mc	11/11/13
XXX	± .010	Boris Muzikent	11/11/13
ANGULAR	± 1/2°	WFO: ENG.	
MATERIAL		APPROVED	
UNIT	KA6C6HL40LV	Joe W/Bruce K	11/18/13
SCALE	NONE		
CODE IDENT. NO.	06223	SIZE	WD-1442
CD. REF.		DWG. NO.	
SHEET	1	REV	E
		OF	1

KOOLTRONIC, INC.
PENNINGTON, NJ USA

WIRING DIAGRAM