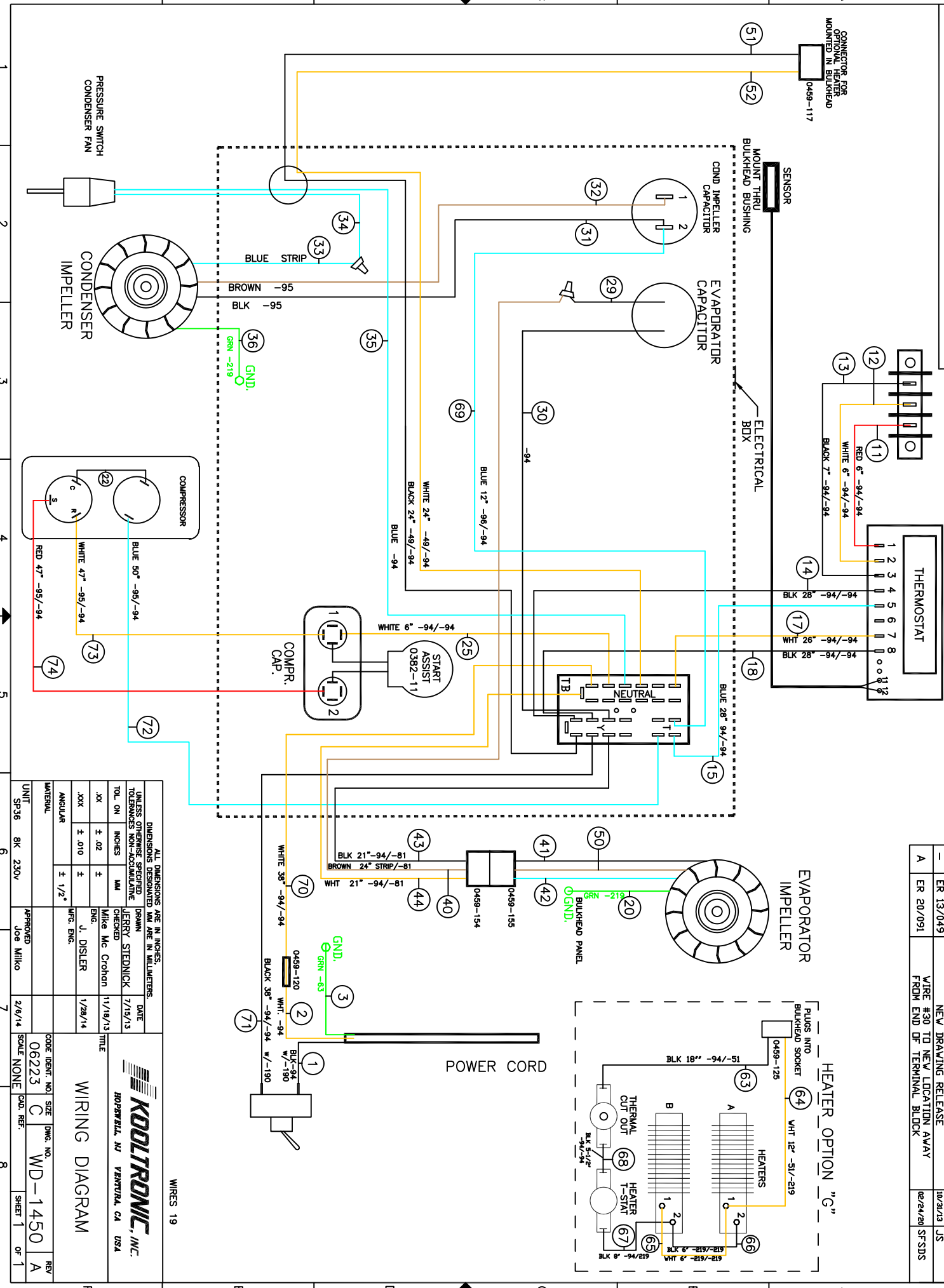


THIS DOCUMENT IS THE PROPERTY OF KOOLTRONIC, INC. AND CONTAINS PROPRIETARY AND CONFIDENTIAL INFORMATION WHICH MUST NOT BE DUPLICATED, USED OR DISCLOSED OTHER THAN AS EXPRESSLY AUTHORIZED BY KOOLTRONIC, INC.

NOTE: #2, #4 & #7 T-STAT TERMINALS GET 0459-190 TERM. HOUSING COVERS



REV	NOTICE	DESCRIPTION	DATE	APPROVED
1	ER 13/049	NEW DRAWING RELEASE	11/21/13	JS
2	ER 20/091	WIRE #30 TO NEW LOCATION AWAY FROM END OF TERMINAL BLOCK	02/24/20	SF/SJS

<p>ALL DIMENSIONS ARE IN INCHES. DIMENSIONS DESIGNATED MM ARE IN MILLIMETERS. UNLESS OTHERWISE SPECIFIED TOLERANCES NON-ACCUMULATIVE</p>	
TOL. ON INCHES	PRAM JERRY STEDNICK 7/15/13
XX ± .02	Mike Mc Crohan 11/18/13
XXX ± .010	ENG. J. DISLER 1/29/14
ANGULAR ± 1/2°	MFG. ENG.
<p>KOOLTRONIC, INC. ROSENWALD, NJ VENTURA, CA USA</p>	
<p>WIRING DIAGRAM</p>	
UNIT	APPROVED
SP36 BK 230V	Joe Milko 2/6/14
SCALE	NONE
CAD. REF.	
SIZE	WD-1450
DWG. NO.	A
REV	
SHEET	1 OF 1

WIRES 19