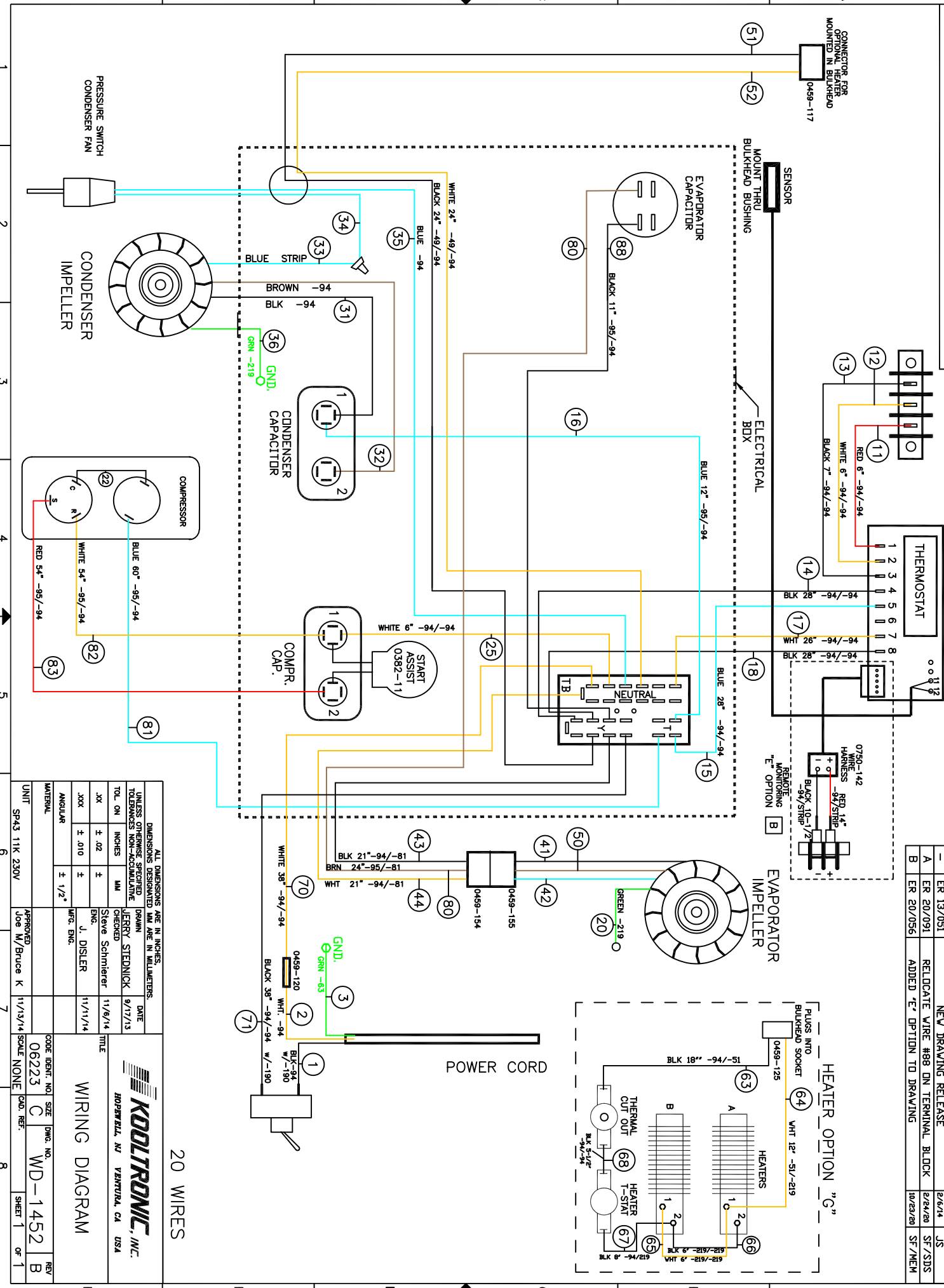


THIS DOCUMENT IS THE PROPERTY OF KOOLTRONIC, INC. AND CONTAINS PROPRIETARY AND CONFIDENTIAL INFORMATION WHICH MUST NOT BE DUPLICATED, USED OR DISCLOSED OTHER THAN AS EXPRESSLY AUTHORIZED BY KOOLTRONIC, INC.

NOTE: #2, #4 & #7 T-STAT TERMINALS GET 0459-190 TERM. HOUSING COVERS



REV	DATE	APPROVED	DESCRIPTION	REVISIONS
1	6/6/14	JS	NEW DRAWING RELEASE	SWM NOTICE
2	8/24/20	SF/SJDS	RELOCATE WIRE #88 ON TERMINAL BLOCK	ER 13/051
3	10/23/20	SF/MECH	ADDED *E* OPTION TO DRAWING	ER 20/091
4				ER 20/056

20 WIRES

**KOOLTRONIC, INC.**  
 HOPWELL, NJ VENTURA, CA USA

**WIRING DIAGRAM**

UNIT	SP43 11K 230V	APPROVED	Joe M/Bruce K	DATE	11/13/14
SCALE	NONE	CODE IDENT. NO.	06223	SIZE	C
		DWG. NO.	WD-1452	REV	B
		CAD. REF.		SHEET	1 OF 1

DIMENSIONS DESIGNATED MM ARE IN MILLIMETERS.		DATE	
UNLESS OTHERWISE SPECIFIED DRAWING TOLERANCES NON-ACCUMULATIVE		11/8/14	
TOL. ON INCHES	MM	CHECKED	Steve Schmieter
.XX ± .02	±	ENG.	J. DISLER
.XXX ± .010	±	MFG. ENG.	
ANGULAR	± 1/2°		
MATERIAL			