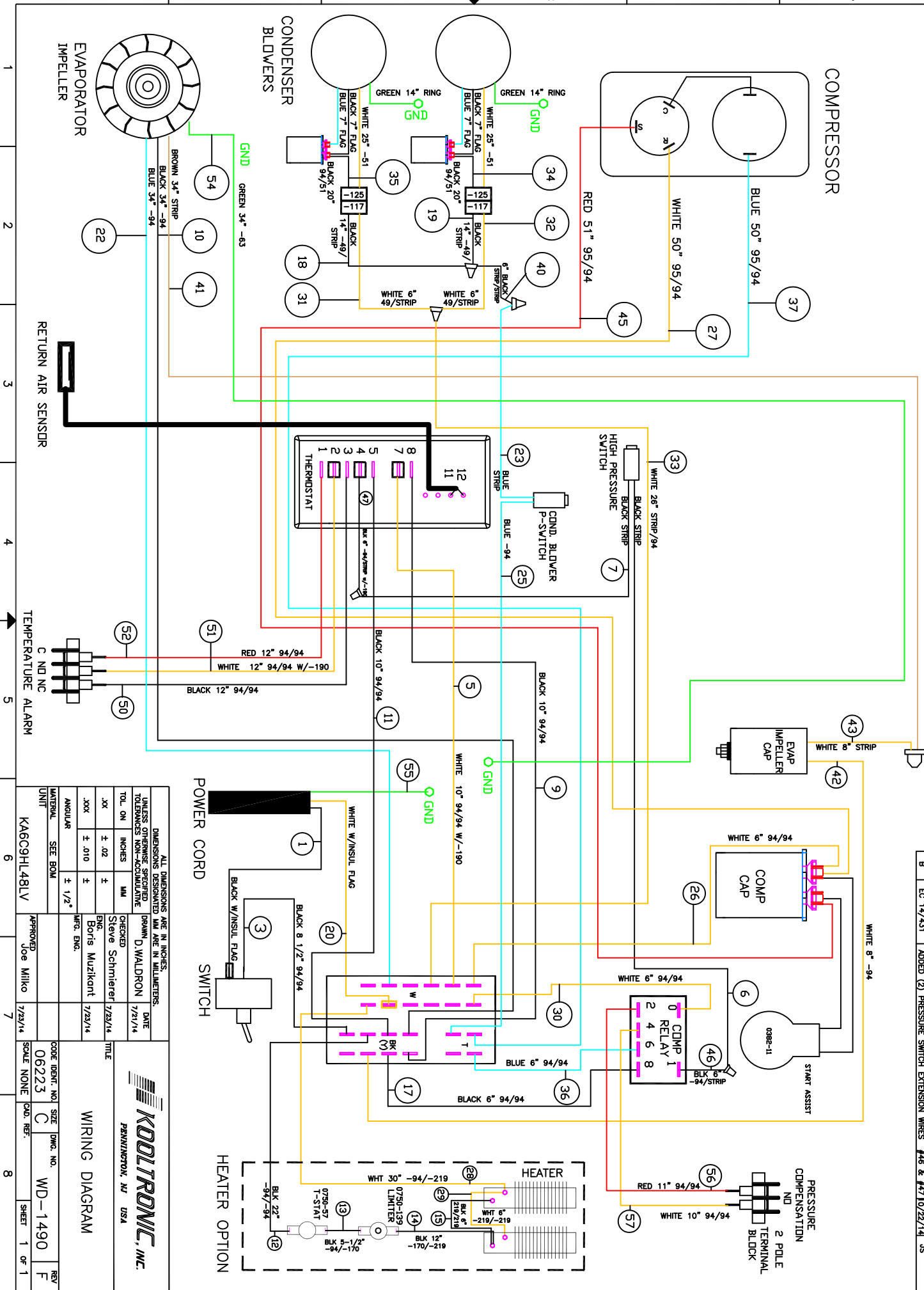


THIS DOCUMENT IS THE PROPERTY OF KOOLTRONIC, INC. AND CONTAINS PROPRIETARY AND CONFIDENTIAL INFORMATION WHICH MUST NOT BE DUPLICATED, USED OR DISCLOSED OTHER THAN AS EXPRESSLY AUTHORIZED BY KOOLTRONIC, INC.

REV	DATE	APPROVED	DESCRIPTION
1	11/24/14	JS	EC 14/503 NAME CHANGE: TEMPERATURE ALARM WAS COOLING EFFECT DETECTOR
2	3/29/15	JS	EC 15/022 ADDED PRESSURE COMPENSATION TERMINAL BLOCK AND WIRES
3	2/26/19	JS/SOS	REMOVED ALARM AND BLOWER RELAYS, ADDED ADDITIONAL PRESS SWITCH
4	6/5/19	CM/SOS	REMOVED (1) T-STAT AND SENSOR, ADDED NEW T-STAT AND WIRES
5	9/16/14	DW-	ADDED (2) PRESSURE SWITCH EXTENSION WIRES #46 & #47 10/22/14
6	7/21/14	DW-	NEW DRAWING RELEASE



DIMENSIONS DESIGNATED MM ARE IN MILLIMETERS.		UNLESS OTHERWISE SPECIFIED DIMENSIONS DESIGNATED INCHES ARE IN INCHES.	
TOL. ON INCHES	± .02	TOL. ON MILLIMETERS	± .13
ANGULAR	± 1/2°	ANGULAR	± 1/2°

DATE	7/29/14	DATE	7/29/14
DESIGNED BY	Boris Muzikant	CHECKED BY	Steve Schmierer
ENG. NO.	7/29/14	ENG. NO.	7/29/14

CODE IDENT. NO.	06223	SCALE	NONE
SIZE	C	DATE	7/29/14
DWG. NO.	WD-1490	SHEET	1 OF 1

KOOLTRONIC, INC.
 PENNINGTON, NJ USA

WIRING DIAGRAM