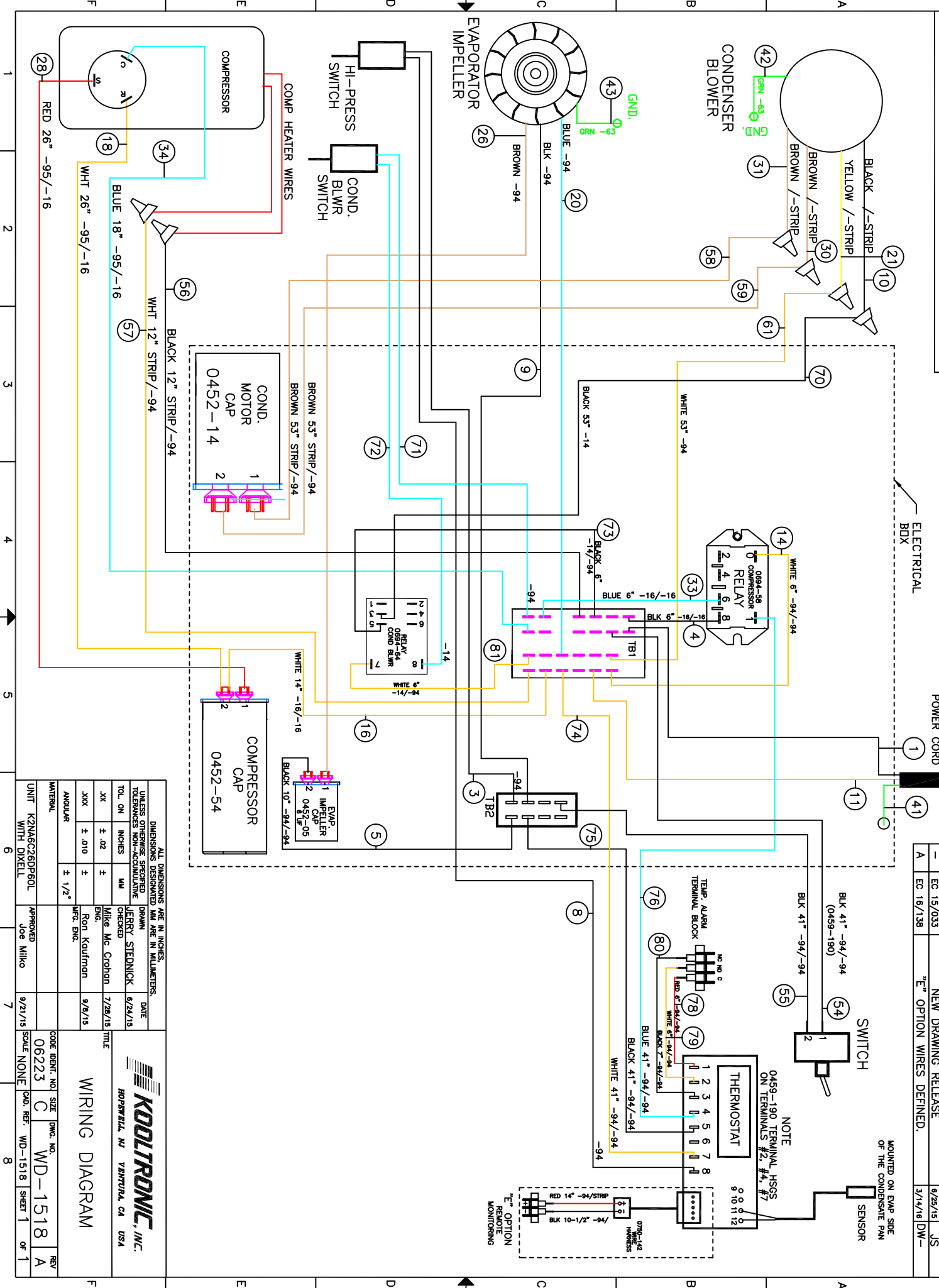


THIS DOCUMENT IS THE PROPERTY OF KOOLTRONIC, INC. AND CONTAINS PROPRIETARY AND CONFIDENTIAL INFORMATION WHICH MUST NOT BE DUPLICATED, USED OR DISCLOSED OTHER THAN AS EXPRESSLY AUTHORIZED BY KOOLTRONIC, INC.



REVISIONS		DATE	APPROVED
SWM	NOTICE		
-	EC 15/033	6/26/15	JS
A	EC 16/138	3/14/16	DW-

NOTICE
0459-190 TERMINAL HSQS ON TERMINALS #2, #4, #7

TEMP. ALARM TERMINAL BLOCK

SWITCH

CONDENSER MOTOR CAP 0452-14

COMPRESSOR MOTOR CAP 0452-54

EVAP. IMPELLER CAP 0452-05

COND. BLWR SWITCH

HI-PRESS SWITCH

COMPRESSOR

EVAPORATOR IMPELLER

CONDENSER BLOWER

RELAY

SWITCH

TEMP. ALARM

TERMINAL BLOCK

TERMINALS

MONITORING

SENSOR

POWER CORD

ELECTRICAL BOX

COMPRESSOR CAP

IMPELLER CAP

UNIT	DESCRIPTION	DATE	APPROVED
K2NA6C26DP60L	WITH DIXELL	9/21/15	Joe Wilko

WIRING DIAGRAM

UNLESS OTHERWISE SPECIFIED	TOLERANCES NON-ACCUMULATIVE	DATE
TOL. ON INCHES	± .02	7/29/15
TOL. ON MILLIMETERS	± .10	6/24/15
APPROVED	Joe Wilko	9/21/15

CODE IDENT. NO.	SIZE	DWG. NO.	REV
06223	C	WD-1518	A

ALL DIMENSIONS ARE IN INCHES. DIMENSIONS DESIGNATED MM ARE IN MILLIMETERS.

HOPEWELL, NJ VENTURA, CA USA