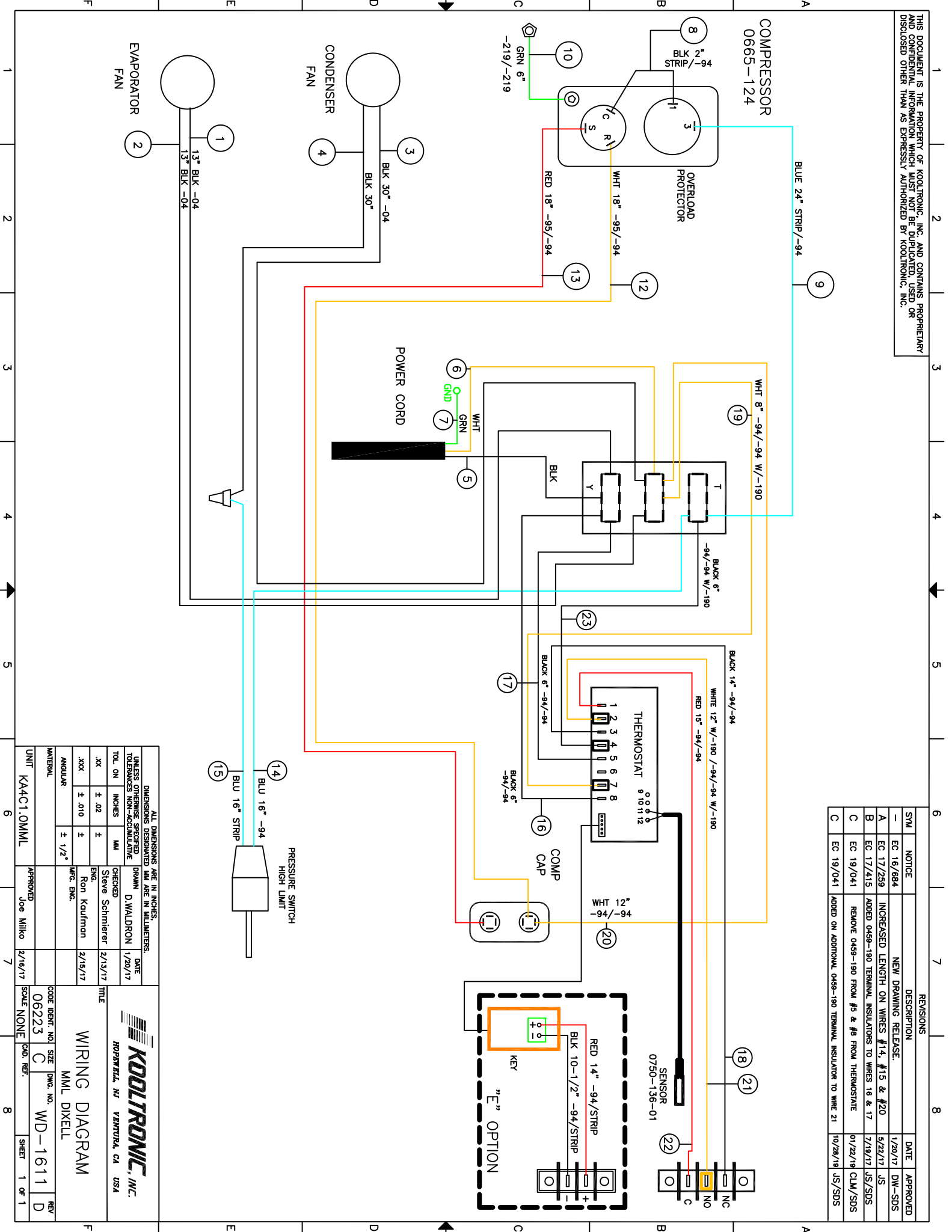


THIS DOCUMENT IS THE PROPERTY OF KOOLTRONIC, INC. AND CONTAINS PROPRIETARY AND CONFIDENTIAL INFORMATION WHICH MUST NOT BE DUPLICATED, USED OR DISCLOSED OTHER THAN AS EXPRESSLY AUTHORIZED BY KOOLTRONIC, INC.



REV	NOTICE	DESCRIPTION	DATE	APPROVED
-	EC 16/684	NEW DRAWING RELEASE.	1/20/17	DW-SDS
A	EC 17/259	INCREASED LENGTH ON WIRES #14, #15 & #20	5/22/17	JS
B	EC 17/415	ADDED 0459-190 TERMINAL INSULATORS TO WIRES 16 & 17	7/19/17	JS/SDS
C	EC 19/041	REMOVE 0459-190 FROM #5 & #6 FROM THERMOSTAT	01/22/19	CLM/SDS
C	EC 19/041	ADDED ON ADDITIONAL 0459-190 TERMINAL INSULATOR TO WIRE 21	10/28/19	JS/SDS

DIMENSIONS ARE IN INCHES.		DIMENSIONS DESIGNATED MM ARE IN MILLIMETERS.	
UNLESS OTHERWISE SPECIFIED		TOLERANCES NON-ACCUMULATIVE	
TOL. ON	INCHES	MM	DATE
XX	± .02	±	2/13/17
XXX	± .010	±	2/15/17
ANGULAR	± 1/2°		

UNIT	KA4C1.0MML	APPROVED	Joe Milko	2/16/17
------	------------	----------	-----------	---------

CODE IDENT. NO.	06223	SIZE	C	DWG. NO.	WD-16111	REV	D
MATERIAL		SCALE	NONE	CAD. REF.		SHEET	1 OF 1

 KOOLTRONIC, INC. HOPWELL, NJ VENTURA, CA USA		WIRING DIAGRAM MML DIXELL	
--	--	-------------------------------------	--