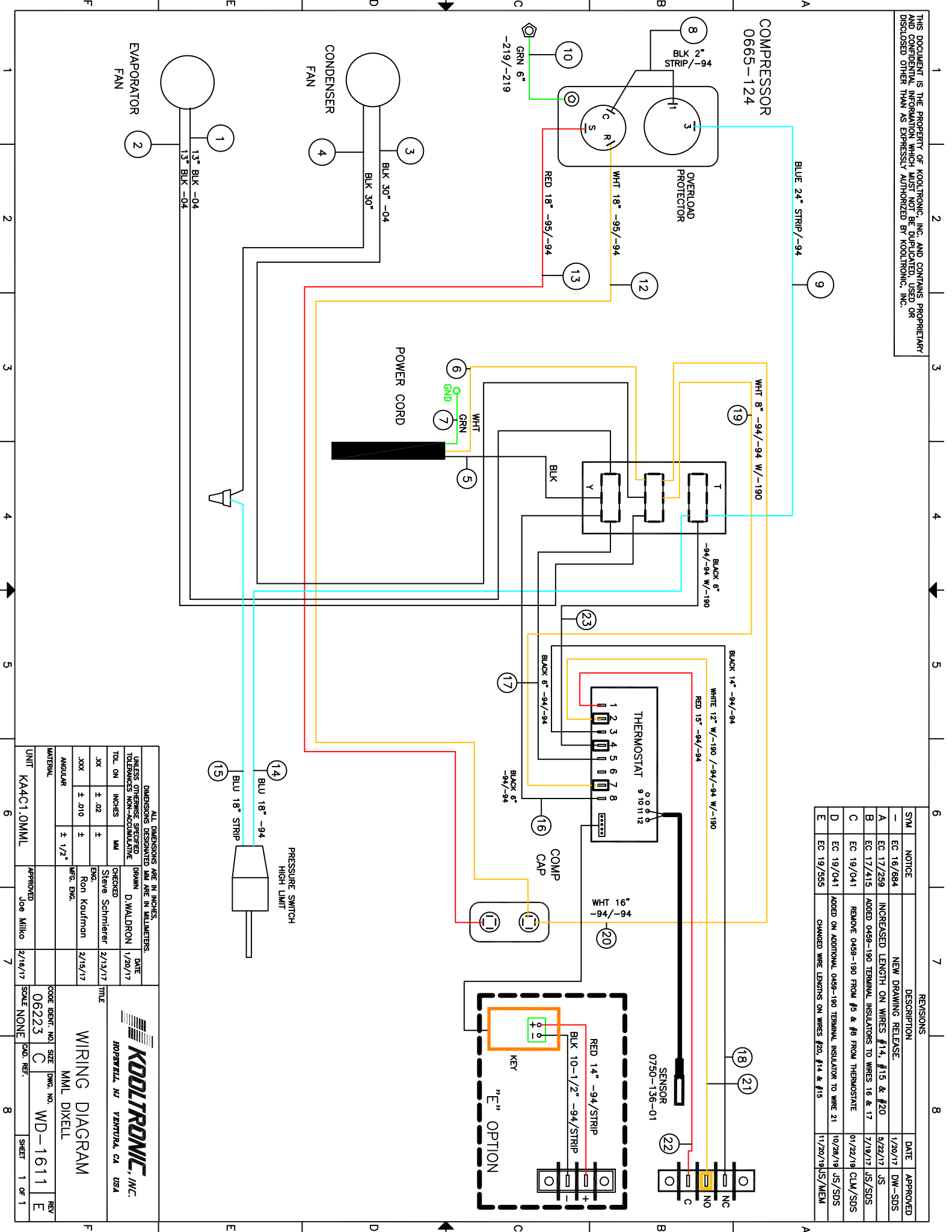


THIS DOCUMENT IS THE PROPERTY OF KOOLTRONIC, INC. AND CONTAINS PROPRIETARY AND CONFIDENTIAL INFORMATION WHICH MUST NOT BE DUPLICATED, USED OR DISCLOSED OTHER THAN AS EXPRESSLY AUTHORIZED BY KOOLTRONIC, INC.



REV	NOTICE	DESCRIPTION	DATE	APPROVED
-	EC 16/694	NEW DRAWING RELEASE.	1/20/17	DW-SDS
A	EC 17/299	INCREASED LENGTH ON WIRES #14, #15 & #20	5/22/17	JS
B	EC 17/415	ADDED 0459-190 TERMINAL INSULATORS TO WIRES 16 & 17	7/19/17	JS/SDS
C	EC 19/041	REMOVE 0459-190 FROM #5 & #6 FROM THERMOSTATE	01/22/19	CLM/SDS
D	EC 19/041	ADDED ON ADDITIONAL 0459-190 TERMINAL INSULATOR TO WIRE 21	10/28/19	JS/SDS
E	EC 19/555	CHANGED WIRE LENGTHS ON WIRES #20, #14 & #15	11/20/19	JS/MEH

DIMENSIONS ARE IN INCHES, UNLESS OTHERWISE SPECIFIED		DIMENSIONS DESIGNATED MM ARE IN MILLIMETERS	
TOL. ON INCHES	MM	DATE	DRAWN
.XX ± .02	±	2/13/17	Steve Schmieler
.XXX ± .010	±	2/15/17	Ron Kaufman
ANGULAR ± 1/2°	±		MFG. ENG.

UNIT	KA4C1.0MML	APPROVED	Joe Milko	2/16/17
------	------------	----------	-----------	---------

CODE IDENT. NO.	06223	SIZE	C	DWG. NO.	WD-1611	REV	E
MATERIAL		SCALE	NONE	CAD. REF.		SHEET	1 OF 1

 <b>KOOLTRONIC, INC.</b> HOPWELL, NJ VENTURA, CA USA		<b>WIRING DIAGRAM</b> MML DIXELL	
--	--	-------------------------------------	--