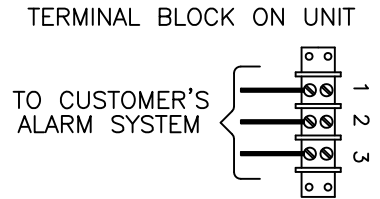
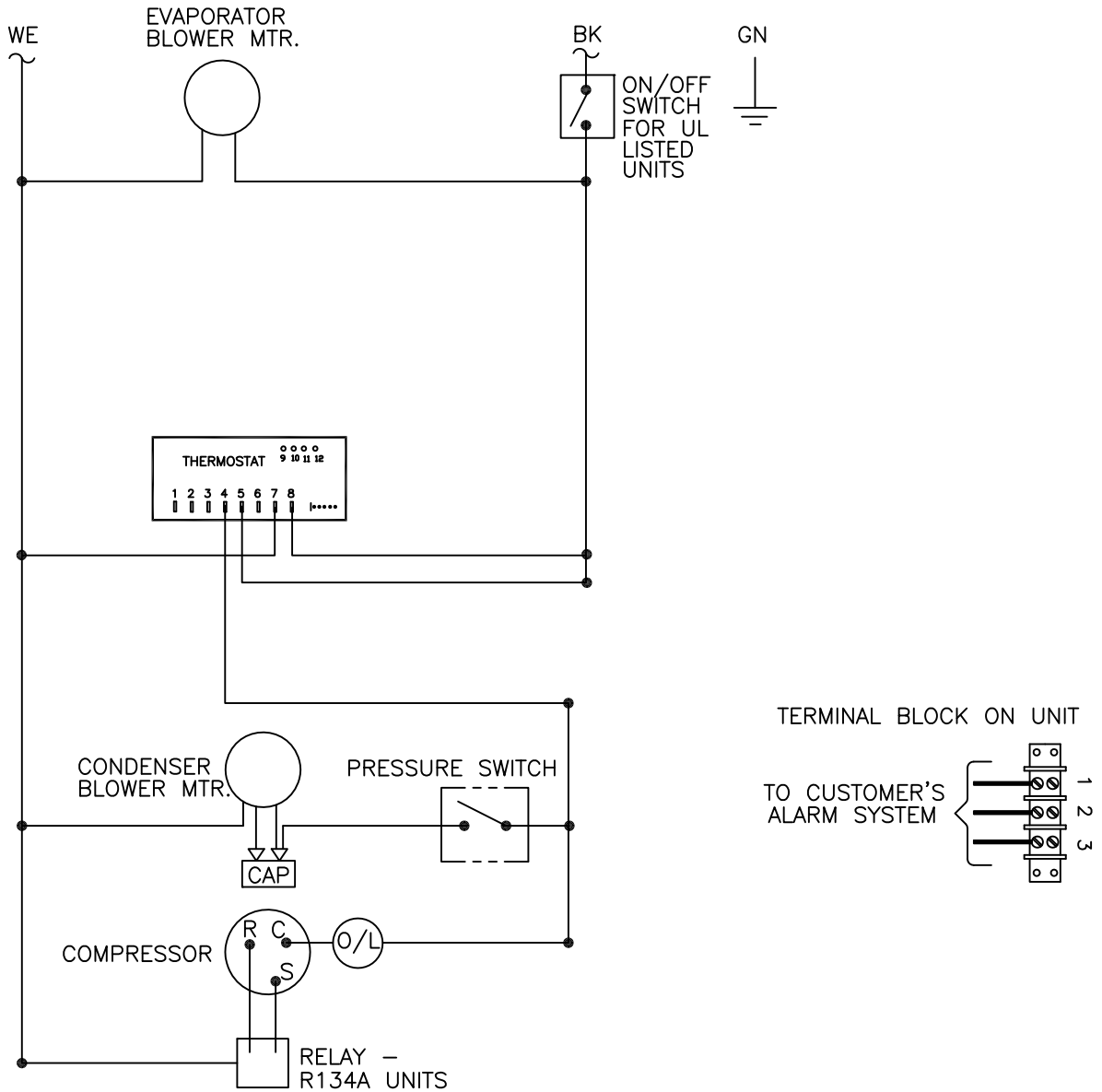


THIS DOCUMENT IS THE PROPERTY OF KOOLTRONIC, INC. AND CONTAINS PROPRIETARY AND CONFIDENTIAL INFORMATION WHICH MUST NOT BE DUPLICATED, USED OR DISCLOSED TO OTHERS, EXCEPT AS EXPRESSLY AUTHORIZED IN WRITING BY KOOLTRONIC, INC.

REVISIONS

SYM	NOTICE	DESCRIPTION	DATE	APPROVED
-	EC 17/370	NEW DRAWING RELEASE	8/18/17	JS/SDS



NOTE:

- ADDITIONAL OPTIONS ARE WIRED TO AN INDIVIDUAL 3 POSITION TERMINAL BLOCK AS SHOWN ABOVE.

ALL DIMENSIONS ARE IN INCHES,
DIMENSIONS DESIGNATED MM ARE IN MILLIMETERS.

UNLESS OTHERWISE SPECIFIED
TOLERANCES NON-ACCUMULATIVE

TOL. ON	INCHES	MM
.XX	± .02	±
.XXX	± .010	±
ANGULAR	± 1/2°	

DRAWN
SEPEHR S. 4/25/17

CHECKED
Steve Schmierer 9/7/17

ENG.
SEPEHR S. 9/13/17

MFG. ENG.

APPROVED
Joe Milko 9/20/17

MATERIAL

UNITS
K_A4C3.5H9R/H10R



WIRING DIAGRAM

CODE IDENT. NO.	SIZE	DWG. NO.	REV
06223	A	WD-1625	-
SCALE 7/8=1	CAD. REF.	SHEET 1 OF 1	