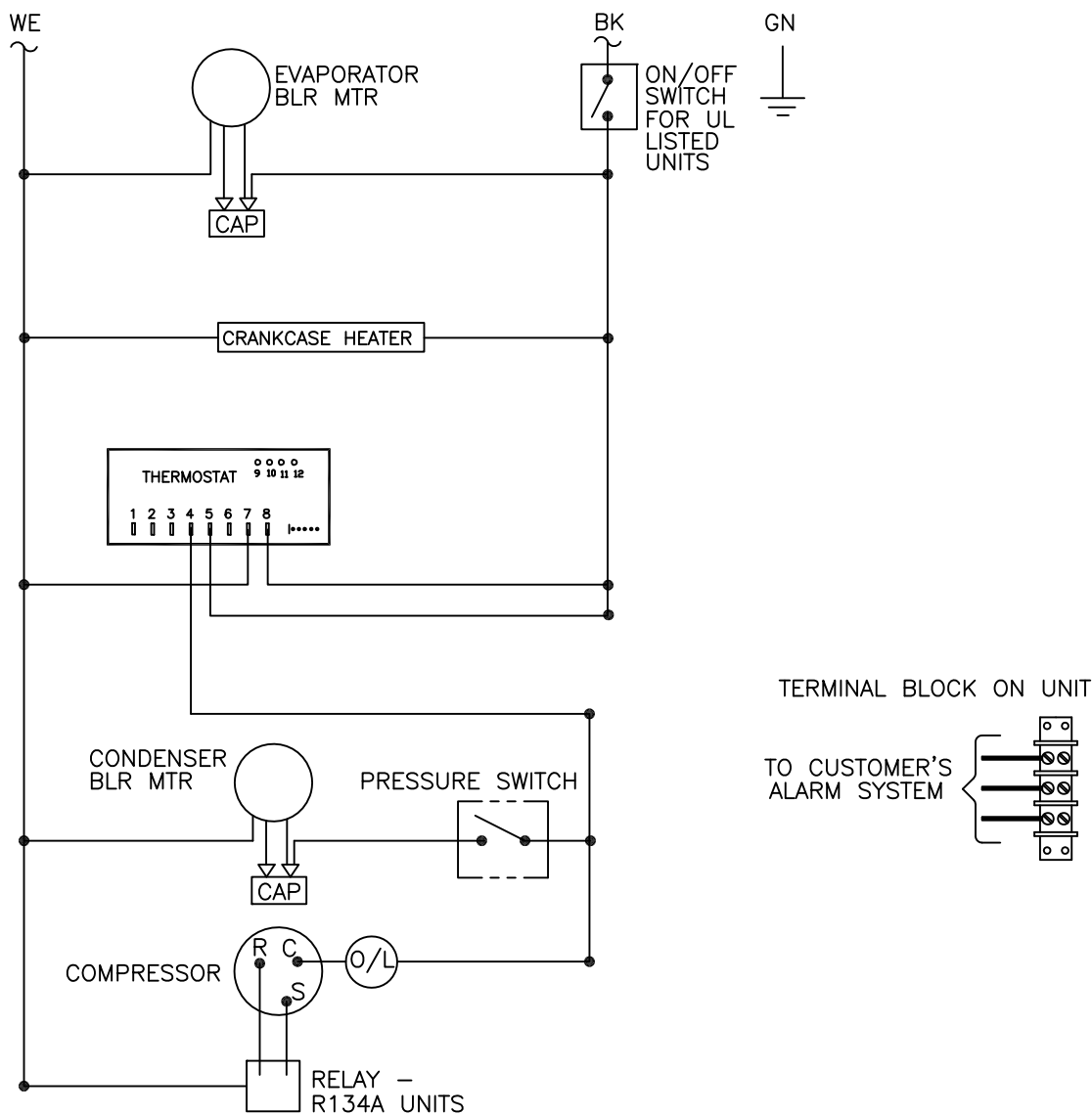


THIS DOCUMENT IS THE PROPERTY OF KOOLTRONIC, INC. AND CONTAINS PROPRIETARY AND CONFIDENTIAL INFORMATION WHICH MUST NOT BE DUPLICATED, USED OR DISCLOSED TO OTHERS, EXCEPT AS EXPRESSLY AUTHORIZED IN WRITING BY KOOLTRONIC, INC.

# REVISIONS

SYM	NOTICE	DESCRIPTION	DATE	APPROVED
-	EC 17/451	NEW DRAWING RELEASE	9/27/17	JS/SDS
A	EC 18/334	ADDED CRANKCASE HEATER	6/12/18	JS/SDS



## NOTE:

- 1) ADDITIONAL OPTIONS ARE WIRED TO AN INDIVIDUAL 3 POSITION TERMINAL BLOCK SHOWN ABOVE.

ALL DIMENSIONS ARE IN INCHES,  
DIMENSIONS DESIGNATED MM ARE IN MILLIMETERS.

UNLESS OTHERWISE SPECIFIED  
TOLERANCES NON-ACCUMULATIVE

TOL. ON	INCHES	MM
.XX	± .02	±
.XXX	± .010	±

ANGULAR ± 1/2°

MATERIAL

UNITS K\_A4C4NP33L

DRAWN SEPEHR S	DATE 8/28/17
CHECKED Steve Schmerer	10/3/17
ENG. SEPEHR S	10/3/17
MFG. ENG.	
APPROVED Joe Milko	10/5/17

**KOOLTRONIC, INC.**  
HOPEWELL, NJ VENTURA, CA USA

## WIRING DIAGRAM

CODE IDENT. NO.	SIZE	DWG. NO.	REV
06223	A	WD-1627	A
SCALE 7/8=1	CAD. REF.	SHEET 1 OF 1	