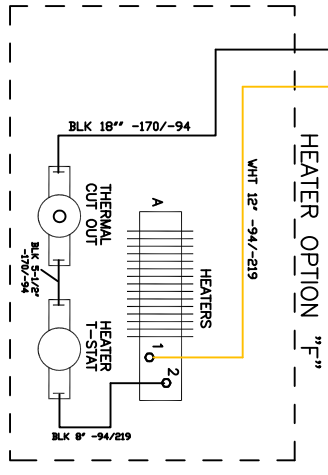
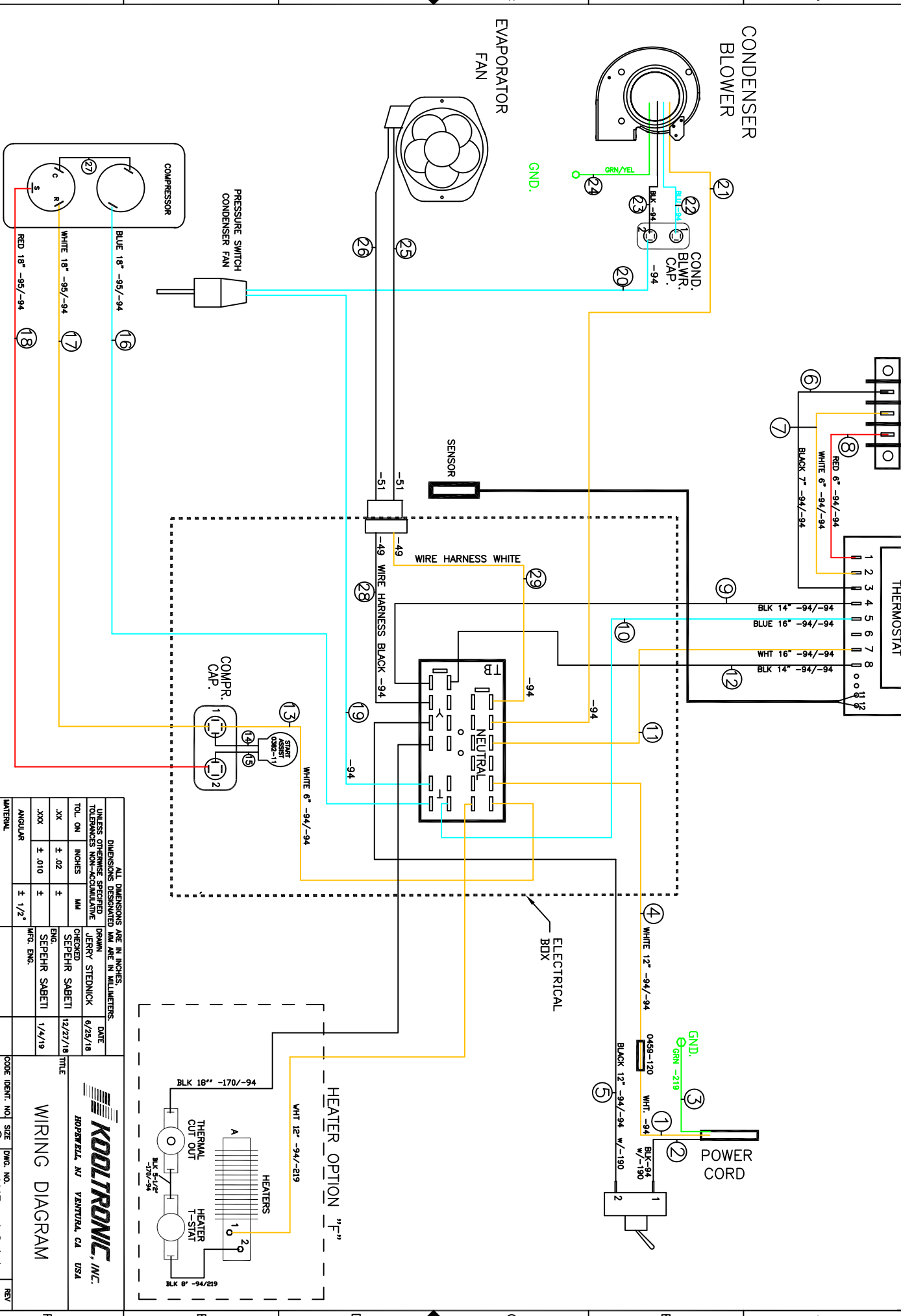


THIS DOCUMENT IS THE PROPERTY OF KOOLTRONIC, INC. AND CONTAINS PROPRIETARY AND CONFIDENTIAL INFORMATION WHICH MUST NOT BE DUPLICATED, USED OR DISCLOSED OTHER THAN AS EXPRESSLY AUTHORIZED BY KOOLTRONIC, INC.

NOTE: #2, #4 & #7 T-STAT TERMINALS GET 0459-190 TERM. HOUSING COVERS

REVISIONS		DATE	APPROVED
SWM	NOTICE		
ER 18/012	NEW DRAWING RELEASE	11/27/18	JS/SDS



DIMENSIONS DESIGNATED MM ARE IN MILLIMETERS.		DATE
UNLESS OTHERWISE SPECIFIED DRAWN		6/25/18
TOLERANCES NON-ACCUMULATIVE JERRY STEDNICK		
TOL. ON INCHES	MM	CHECKED
.XX	± .02	SEPPEHR SABETTI
.XXX	± .010	ENG. SEPPEHR SABETTI
ANGULAR	±	12/27/18
MATERIAL		APPROVED
		SEPPEHR SABETTI
UNIT	HL28 3K 115V 230V	1/16/19
SCALE	NONE	
CODE IDENT. NO. SIZE DWG. NO.		REV
06223	C	WD 1644
CAD. REF.		
SHEET 1		OF 1

ALL DIMENSIONS ARE IN INCHES.

UNLESS OTHERWISE SPECIFIED DRAWN JERRY STEDNICK 6/25/18

TOLERANCES NON-ACCUMULATIVE

TOL. ON INCHES MM

.XX ± .02

.XXX ± .010

ANGULAR ±

MATERIAL

UNIT HL28 3K 115V 230V

SCALE NONE

CODE IDENT. NO. SIZE DWG. NO. REV

06223 C WD 1644

CAD. REF.

SHEET 1 OF 1

KOOLTRONIC, INC.
ROPERTELL, NJ VENTURA, CA USA

WIRING DIAGRAM